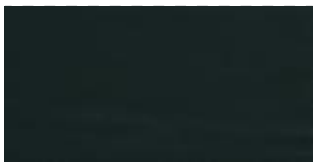
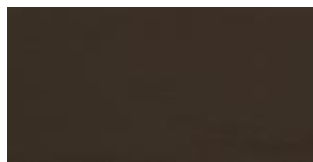


TP940



TP959



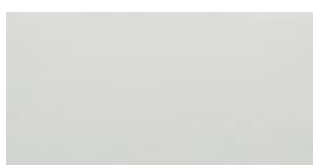
TP927



TP935



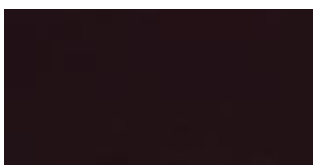
TP942



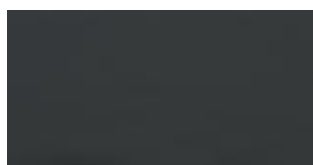
TP901



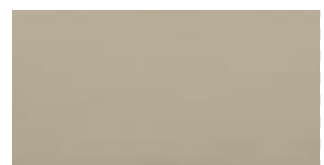
TP949



TP910



TP956



TP937

## ELMOCOAST

### IT

**Origine**

Bovini Scandinavi

**Spessore**

1,1/1,3 mm

**Resistenza alla luce**

ISO 105-B02: valore 5

**Resistenza allo sfregamento**

ISO 11640: asciutto 150

ISO 11640: bagnato 1000

ISO 11640: sudore 80/4

**Finish adhesion**

ISO 11644: valore 3.5N/cm

**Resistenza alla lacerazione**

ISO 3377-1: valore 15N

### EN

**Origin**

Scandinavian Cattle

**Thickness**

1,1/1,3 mm

**Lightfastness**

ISO 105-B02: value 5

**Rubbing**

ISO 11640: wet 150

ISO 11640: dry 1000

ISO 11640: sweat 80/4

**Finish adhesion**

ISO 11644: value 3.5N/cm

**Tear strenght**

ISO 3377-1: value 15N

### RIVESTIMENTO DISPONIBILE/ UPHOLSTERY AVAILABLE

ITALIA  
NULITE  
LIGHT  
SMARTOFFICE  
SMARTLIGHT  
ONE  
CLOP  
SEA SHELL  
TIMELESS  
AMARCORD  
PONTE  
CUBE  
BLOOM  
FRAME  
EPOCA  
CLUSTER  
NESTAR  
AIRE JR

TESSUTO  
REMIX 3

CATEGORIA K  
CATEGORY K

**kvadrat**



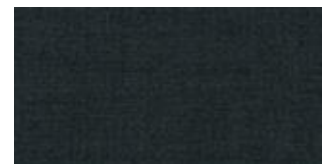
2033



2020



2026



2027



2038



2024



2016



2012



2035



2046

## REMIX 3

### IT

#### Composizione

90% new wool, worsted 10% nylon

#### Peso

420 g/lin. m (13.55 oz/ly)

#### Altezza

Approx. 140 cm (Approx. 55")

#### PERFORMANCE

##### Durabilità

100,000 Martindale

##### Pilling

4 (ISO 1-5)

##### Resistenza alla luce

6 — ISO 105-B02

#### TEST RESISTENZA AL FUOCO

NF D 60 013

US Cal. Bull. 117-2013

EN 1021-1/2

IMO FTP Codice 2010 Part 8

ÖNORM B1/Q1

GB 50222 B1 con trattamento (Chinese)

BS 5852 part 1

ASTM E84 Classe A

UNI 9175 1IM

NFPA 260

AS/NZS 1530.3

AS/NZS 3837 classe 2

EN 13501 B-s2, d0

IMO FTP Code 2010 Part 7 con trattamento

SN 198 898 5.3 con trattamento

ASTM E84 Classe A

BS 5852 crib 5 con trattamento

### EN

#### Composition

90% new wool, worsted 10% nylon

#### Weight

420 g/lin. m (13.55 oz/ly)

#### Width

Approx. 140 cm (Approx. 55")

#### PERFORMANCE

##### Durability

100,000 Martindale

##### Pilling

4 (ISO 1-5)

##### Light fastness

6 — ISO 105-B02

#### FIRE TESTS

NF D 60 013

US Cal. Bull. 117-2013

EN 1021-1/2

IMO FTP Code 2010 Part 8

ÖNORM B1/Q1

GB 50222 B1 with treatment (Chinese)

BS 5852 part 1

ASTM E84 Class A Adhered

UNI 9175 1IM

NFPA 260

AS/NZS 1530.3

AS/NZS 3837 class 2

EN 13501 B-s2, d0 with treatment

IMO FTP Code 2010 Part 7 with treatment

SN 198 898 5.3 with treatment

ASTM E84 Class A Unadhered

BS 5852 crib 5 with treatment

#### RIVESTIMENTO DISPONIBILE/ UPHOLSTERY AVAILABLE

ITALIA	SEA SHELL
NULITE	TIMELESS
LIGHT	AMARCORD
SMARTOFFICE	PONTE
SMARTLIGHT	CUBE
ONE	BLOOM
IKIGAI	FRAME
OVERTIME	EPOCA
SMARTBACK	CLUSTER
SWITCH	NESTAR
NEAT	AIRE JR
POP	
POST	
CLOP	



CR01



CR02



CR03



CR04



CR05



CR06



CR07



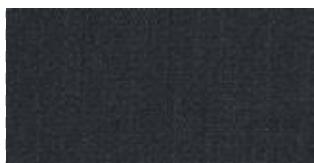
CR08



CR09



CR10



CR11

# CRISP

## IT

### Composizione

93% Lana Nuova Zelanda, 7% Poliamide

### Peso

460 g/lm — 14.84 oz/lin.yd

### Altezza

140 cm — 55 inches

## PERFORMANCE

### Abrasion

200,000 — cicli martindale (EN ISO 12947-2)

200,000 — cicli martindale (ASTM D4966)

### Pilling

4-5 — scale 1-5, max. 5 (EN ISO 12945-2)

### Resistenza alla luce

5-7 — scale 1-8, max. 8 (EN ISO 105-B02)

### Resistenza allo sfregamento

4-5/4-5 — scale 1-5, max. 5 (EN ISO 105x12)

## INFIAMMABILITÀ

Certificazioni

BS 5852 Part 1 0,1

sigarette e fiammiferi

1988 BS 476 Parte 7 classe 2

BS EN 1021 1&2 sigarette e fiammiferi

Classe Uno UNI 9175 Class 1 IM

CA TB 117-2013

IMO MSC 307(88) Annex 1 part 8

MED Certificato IMO

IMO MSC 307(88) Annex 1 part 8 UK

MED Certificato IMO UK

ÖNORM A3800-B2-B3825-Q1 UK

## US ACT

### Pass

AATCC 8 or 116 bagnato/umido

AATCC 8 or 116 bagnato/umido

ASTM D4966 Cicli Martindale

ASTM D4966 Cicli Martindale

ASTM D4970 Pilling

ASTM D4970 Pilling

AATCC 16 Resistenza alla luce

AATCC 16 Resistenza alla luce

CA TB 117-2013

CA TB 117-2013

## EN

### Composition

93% New Zealand wool, 7% Polyamide

### Weight

460 g/lm — 14.84 oz/lin.yd

### Width

140 cm — 55 inches

## PERFORMANCE

### Abrasion

200,000 — rubs martindale (EN ISO 12947-2)

200,000 — rubs martindale (ASTM D4966)

(heavy duty upholstery)

### Pilling

4-5 — scale 1-5, max. 5 (EN ISO 12945-2)

### Light fastness

5-7 — scale 1-8, max. 8 (EN ISO 105-B02)

### Rubbing fastness dry/wet

4-5/4-5 — scale 1-5, max. 5 (EN ISO 105x12)

## FLAMMABILITY

Certificates

BS 5852 Part 1 0,1 Cigarette & Match,

The Furniture and Furnishing Regulations 1988

BS 476 Part 7 class 2

BS EN 1021 1&2 Cigarette and Match

Class Uno UNI 9175 Class 1 I EMME

CA TB 117-2013

IMO MSC 307(88) Annex 1 part 8

MED Certificate IMO

IMO MSC 307(88) Annex 1 part 8 UK

MED Certificate IMO UK

ÖNORM A3800-B2-B3825-Q1 UK

## US ACT

### Pass

AATCC 8 or 116 Dry/wet crocking

AATCC 8 or 116 Dry/wet crocking

ASTM D4966 Martindale (heavy duty)

ASTM D4966 Martindale (heavy duty)

ASTM D4970 Pilling

ASTM D4970 Pilling

AATCC 16 Light fastness

AATCC 16 Light fastness

CA TB 117-2013

CA TB 117-2013

## RIVESTIMENTO DISPONIBILE/ UPHOLSTERY AVAILABLE

ITALIA

NULITE

LIGHT

SMARTOFFICE

SMARTLIGHT

ONE

IKIGAI

OVERTIME

SMARTBACK

SWITCH

NEAT

POP

POST

CLOP

SEA SHELL

TIMELESS

AMARCORD

PONTE

CUBE

BLOOM

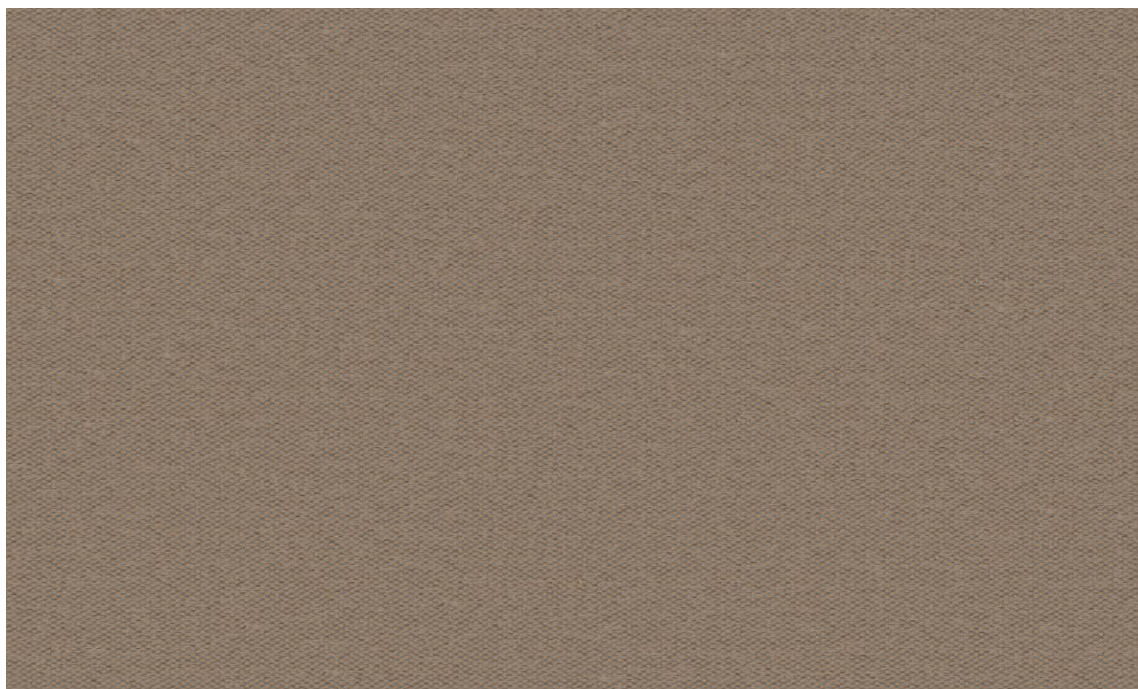
FRAME

EPOCA

CLUSTER

NESTAR

AIRE JR



1831



1811



1816



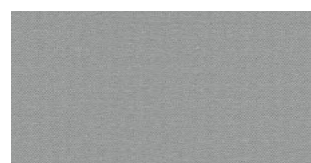
1812



1804



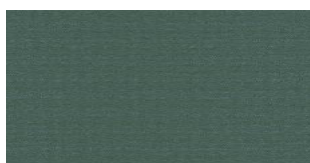
1826



1825



1832



1820



**DESTINAZIONI D'USO/ APPLICATIONS**  
Rivestimenti per imbottiti, casa, ufficio  
e contract/ Offices, hotels, institutions,  
domestic use

**RESISTENZA ALL'ABRASIONE**  
(CICLI MARTINDALE)/ ABRASION RESISTANCE  
(MARTINDALE CYCLES)

EN ISO 12947-2	90.000
ASTM D4157	100.000

**RESISTENZA ALLO SFREGAMENTO/ FASTNESS**  
TO RUBBING

EN ISO 105 - X12	
Umido/ Wet	4/5
Secco/ Dry	4/5
AATCC 8	
Umido/ Wet	5
Secco/ Dry	5

**RESISTENZA ALLA LUCE/ LIGHT FASTNESS**

EN ISO 105 - B02	6
AATCC 16.3: 40 Hours	4

**PILLING**

EN ISO 12945-2	4
ASTM D3511	5

**MANUTENZIONE E PULIZIA/ MAINTENANCE**  
AND CLEANING

Usare con regolarità aspirapolvere a beccuccio liscio,  
senza spazzolare/ Hoover regularly and don't brush

**Restringimento / Shrinkage (%)**

Ordito / Warp	-2.7
Trama / Weft	-0.6

## ACTON

**CARATTERISTICHE/ DESCRIPTION**  
100% poliestere ignifugo  
Altezza 141 cm  
Peso 429 g/m<sup>2</sup>  
Possono verificarsi differenze di colore

100% flame retardant polyester  
Width 141 cm  
Weight 429 g/m<sup>2</sup>  
Differences in color may occur

**INFIAMMABILITÀ/ FLAMMABILITY**

11M UNI 9175  
EN 1021 - 1  
EN 1021 - 2  
BS 5852 CRIB 5  
TB 117:2013  
IMO FTP 2010 part 8  
DIN 4102 B1  
NFPA 260, Class 1

**RESISTENZA ALLA TRAZIONE/ BREAKING STRENGTH**

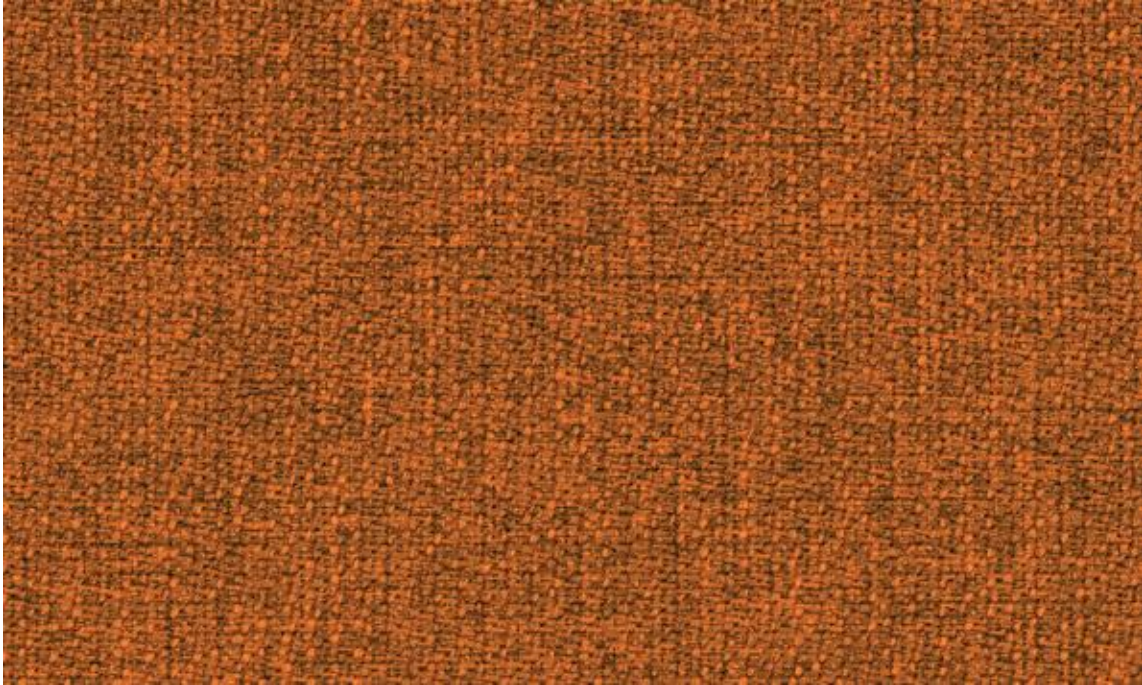
EN ISO 13937 (N)	
Ordito/ Warp	1380
Trama/ Weft	1790
ASTM D5034 (N)	
Ordito/ Warp	263 lbs
Trama/ Weft	345 lbs

**5 ANNI DI GARANZIA/ 5 YEAR WARRANTY**

**REVISIONE TESSUTI 05-2021/  
FABRIC REVIEW 2021-05**



USCG -  
EU MRA  
0038



SM15



SM01



SM02



SM04



SM07



SM09



SM13



SM14



SM16



SM17



SM18



SM19

## STEP MELANGE

### IT

**Composizione**  
100% Trevira CS

**Peso**  
470 g/lm — 15.16 oz/lin.yd

**Altezza**  
140 cm — 55 inches

### PERFORMANCE

**Abrasion**  
100,000 — cicli martindale (EN ISO 12947-2)  
100,000 — cicli (ASTM D4157)

**Pilling**  
4-5 — scale 1-5, max. 5 (EN ISO 12945-2)

**Resistenza alla luce**  
5-7 — scale 1-8, max. 8 (EN ISO 105-B02)

**Resistenza allo sfregamento**  
4-5/4-5 — scale 1-5, max. 5 (EN ISO 105x12)

### INFIAMMABILITÀ

Certificati  
DIN 4102 - B1  
NF P 92-503/504/505 M1  
BS EN 1021 1&2 Sigarette e fiammiferi  
BS EN 1021-1 Sigarette  
BS 5852 Crib 5  
ÖNORM A3800-B1-B3825-Q1 UK  
FAR/JAR 25.853 (a) (i) (ii)  
AM 18 - NF D 60-013  
CA TB 117-2013  
Classe Uno UNI 9175 Classe 1 IM  
DIN EN 13501-1 B-s1,d0  
DIN EN 13501-1 B-s1,d0  
IMO MSC 307(88) Annex 1 part 8  
IMO MSC 307(88) Annex 1 part 8 UK  
MED Certificato IMO  
MED Certificato IMO UK  
CAN/ ULC-S102.2  
CAN/ULC-S109  
NFPA 701

### US ACT

**Pass**  
ASTM D4157-07 abrasione 100k  
ASTM D3511 Pilling  
CA TB 117-2013  
NFPA 701  
AATCC 16 Resistenza alla luce  
AATCC 8 or 116 bagnato/umido

### RIVESTIMENTO DISPONIBILE/ UPHOLSTERY AVAILABLE

ITALIA	SEA SHELL
NULITE	TIMELESS
LIGHT	AMARCORD
SMARTOFFICE	PONTE
SMARTLIGHT	CUBE
ONE	BLOOM
IKIGAI	FRAME
OVERTIME	EPOCA
SMARTBACK	CLUSTER
SWITCH	NESTAR
NEAT	AIRE JR
POP	
POST	
CLOP	

### EN

**Composition**  
100% Trevira CS

**Weight**  
470 g/lm — 15.16 oz/lin.yd

**Width**  
140 cm — 55 inches

### PERFORMANCE

**Abrasion**  
100,000 — rubs martindale (EN ISO 12947-2)  
100,000 — double rubs wyzenbeek (ASTM D4157)  
(heavy duty upholstery)

**Pilling**  
4-5 — scale 1-5, max. 5 (EN ISO 12945-2)

**Light fastness**  
5-7 — scale 1-8, max. 8 (EN ISO 105-B02)

**Rubbing fastness dry/wet**  
4-5/4-5 — scale 1-5, max. 5 (EN ISO 105x12)

### FLAMMABILITY

Certificates  
DIN 4102 - B1  
NF P 92-503/504/505 M1  
BS EN 1021 1&2 Cigarette and Match  
BS EN 1021-1 Cigarette  
BS 5852 Crib 5  
ÖNORM A3800-B1-B3825-Q1 UK  
FAR/JAR 25.853 (a) (i) (ii)  
AM 18 - NF D 60-013-(only for fabric)  
CA TB 117-2013  
Class Uno UNI 9175 Class 1 I EMME  
DIN EN 13501-1 B-s1,d0  
DIN EN 13501-1 B-s1,d0  
IMO MSC 307(88) Annex 1 part 8  
IMO MSC 307(88) Annex 1 part 8 UK  
MED Certificate IMO  
MED Certificate IMO UK  
CAN/ ULC-S102.2  
CAN/ULC-S109  
NFPA 701

### US ACT

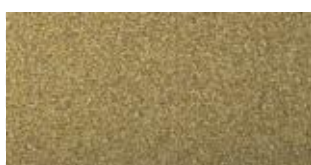
**Pass**  
ASTM D4157-07 Wyz abrasion (heavy duty) 100k  
ASTM D3511 Pilling  
CA TB 117-2013  
NFPA 701  
AATCC 16 Light fastness  
AATCC 8 or 116 Dry/wet crocking



GY02



GY04



GY06



GY08



GY10



GY12



GY14



GY16

# GYRE

## IT

**Composizione**  
100% Revive (PP)

**Peso**  
440 g/m<sup>2</sup>

**Altezza**  
140 cm

**RESISTENZA AL FUOCO**  
TB 117:2013

## EN

**Composition**  
100% Revive (PP)

**Weight**  
440 g/m<sup>2</sup>

**Width**  
140 cm

**FIRE RESISTANCE**  
TB 117:2013

## RIVESTIMENTO DISPONIBILE/ UPHOLSTERY AVAILABLE

ITALIA	SEA SHELL
NULITE	TIMELESS
LIGHT	AMARCORD
SMARTOFFICE	PONTE
SMARTLIGHT	CUBE
ONE	BLOOM
IKIGAI	FRAME
OVERTIME	EPOCA
SMARTBACK	CLUSTER
SWITCH	NESTAR
NEAT	AIRE JR
POP	ESSENZIALE
POST	
CLOP	

TESSUTO  
INCA RIO

CATEGORIA C  
CATEGORY C

**novartiplast italia**  
*High Performance Quality Leather*



IC02



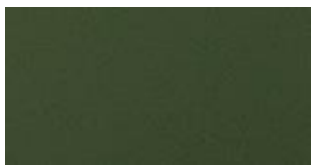
IC04



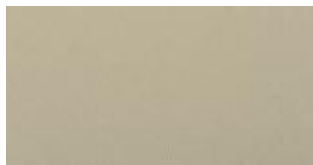
IC06



IC08



IC10



IC12



IC14



IC16



IC18



IC20

# INCA RIO

## IT

### Aspetto

pelle liscia

### Composizione

88% VINYL / 1% PU / 7% PES / 4% CO

### Peso

670 gr/m2

### Altezza

140 cm

### Resistenza all'acetone

UNI 4818 - P.16

### Resistenza salinità (acqua marina)

UNI EN ISO 105-E02:2013

### Resistenza alla candeggina

UNI EN ISO 105-X12:2003 Using 3% Sodium Hypochlorite

### Resistenza all'acqua

UNI EN ISO 105-X12:2003 Using alcohol

### RESISTENZA AL FUOCO

EU: UNI EN ISO 1021 PART 1 & PART 2

IT: CLASSE 1IM - UNI 9175

UK: BS5892 SOURCE 0 & 1

US: CAL TB 117

## EN

### Aspect

Smooth leather look

### Composition

88% VINYL / 1% PU / 7% PES / 4% CO

### Weight

670 gr/m2

### Width

140 cm

### Acetone resistant

UNI 4818 - P.16

### Salinity resistant (sea water)

UNI EN ISO 105-E02:2013

### Bleach resistant

UNI EN ISO 105-X12:2003 Using 3% Sodium Hypochlorite

### Alcohol resistant

UNI EN ISO 105-X12:2003 Using alcohol

### FIRE RESISTANCE

EU: UNI EN ISO 1021 PART 1 & PART 2

IT: CLASSE 1IM - UNI 9175

UK: BS5892 SOURCE 0 & 1

US: CAL TB 117

## RIVESTIMENTO DISPONIBILE/ UPHOLSTERY AVAILABLE

ITALIA  
NULITE  
LIGHT  
SMARTOFFICE  
SMARTLIGHT  
ONE  
CLOP  
SEA SHELL  
TIMELESS  
AMARCORD

PONTE  
CUBE  
BLOOM  
FRAME  
EPOCA  
CLUSTER  
NESTAR  
AIRE JR  
ESSENZIALE



603



649



604



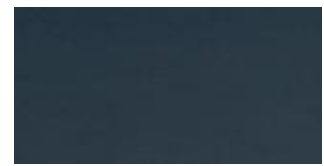
605



606



610



619



621



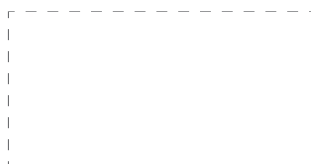
633



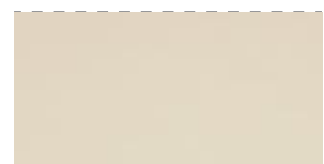
609



611



601



602

# SECRET

## IT

### Composizione

76% PVC - 22% PES - 2% PU

### Peso

540 +/- 10 g/m2

### Altezza

140 cm

### RESISTENZA AL FUOCO

UNI 9175 classe 1IM

EN 1021-1

EN 1021-2

BS 5852-1 cigarette test

BS 5852-1 match test

TB 117:2013

## EN

### Composition

76% PVC - 22% PES - 2% PU

### Weight

540 +/- 10 g/m2

### Width

140 cm

### FIRE RESISTANCE

UNI 9175 classe 1IM

EN 1021-1

EN 1021-2

BS 5852-1 cigarette test

BS 5852-1 match test

TB 117:2013

## RIVESTIMENTO DISPONIBILE/ UPHOLSTERY AVAILABLE

ITALIA

NULITE

LIGHT

SMARTOFFICE

SMARTLIGHT

ONE

CLOP

SEA SHELL

TIMELESS

AMARCORD

PONTE

CUBE

BLOOM

FRAME

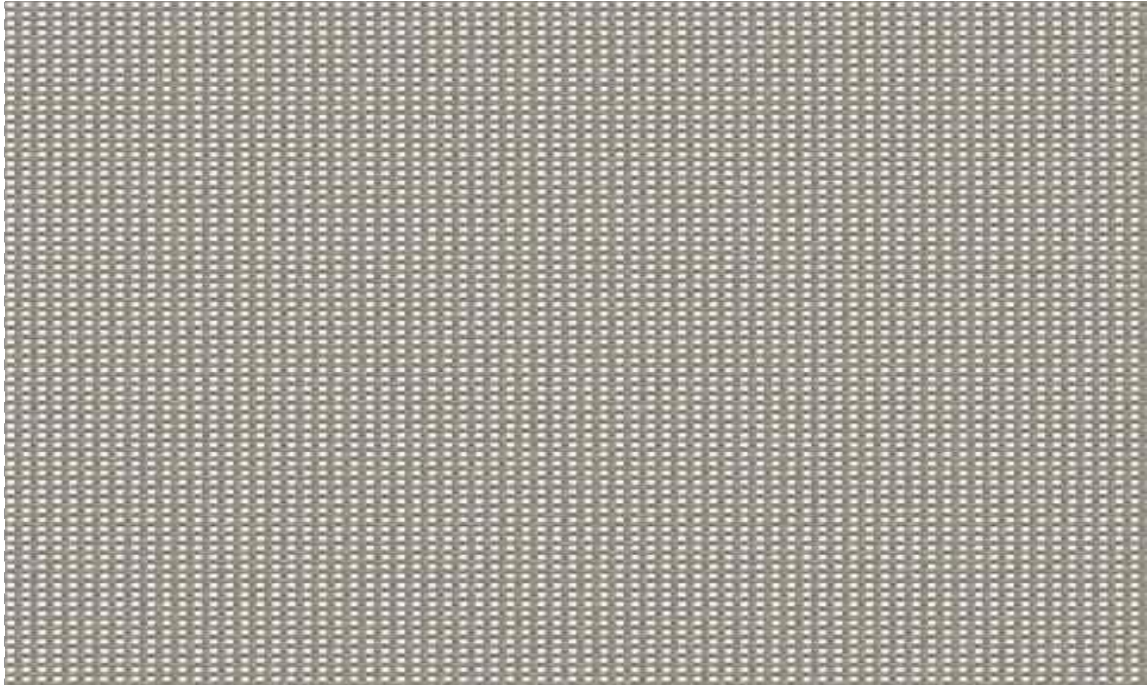
EPOCA

CLUSTER

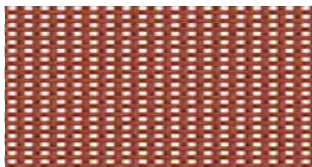
NESTAR

AIRE JR

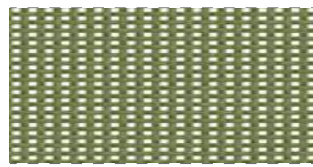
ESSENZIALE



803



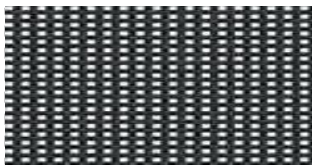
802



804



805



651



801

# BATYLINE ISO

## IT

### Proprietà fisiche

resistenza tessile (ordito/reni)  
240/240  
daN/5 cm  
EN ISO 1421

**Resistenza alla lacerazione (ordito/reni)**  
DIN 53.363

### Peso

500 g/m<sup>2</sup>  
14.7 oz/sq. yd  
EN ISO 2286-2

### Altezza

180 cm 70.9 in

### Resistenza all'abrasione

>120,000 cycles  
EN ISO 12947-2 Martindale

>600,000 double rubs  
ASTM D4157 Wyzenbeek

### Certificazioni etichette, garanzia

Riciclabile / certificazione Greenguard  
certificazione FDES  
Classificazione Base - Eco Bau  
Tecnologia Smart Yarn  
garanzia 5 anni

### RESISTENZA AL FUOCO

NFP 92-507  
DIN 4102-1  
IMO  
MSC.307(88)  
(2010FTP CODE)  
ANNEX 1 PART 8  
CAL TB 117  
BS5852  
SOURCE 2

## EN

### Physical properties

Tensile strength (warp/weft)  
240/240  
daN/5 cm  
EN ISO 1421

Tear strength (warp/weft)  
DIN 53.363

### Weight

500 g/m<sup>2</sup>  
14.7 oz/sq. yd  
EN ISO 2286-2

### Width

180 cm 70.9 in

### Abrasion resistance

>120,000 cycles  
EN ISO 12947-2 Martindale

>600,000 double rubs  
ASTM D4157 Wyzenbeek

### Certifications, labels, warranty

Recyclable / Greenguard certification  
FDES Certification  
Base Classification - Eco Bau  
Smart Yarn Technology  
5 years warranty

### FIRE RESISTANCE

NFP 92-507  
DIN 4102-1  
IMO  
MSC.307(88)  
(2010FTP CODE)  
ANNEX 1 PART 8  
CAL TB 117  
BS5852  
SOURCE 2

## RIVESTIMENTO DISPONIBILE/ UPHOLSTERY AVAILABLE

OVERTIME  
POP  
NULITE  
LIGHT