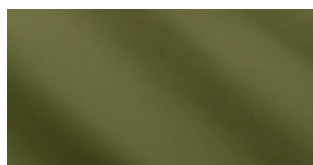




LX07



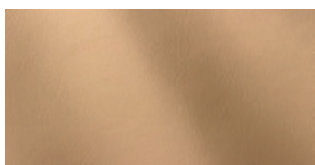
LX15



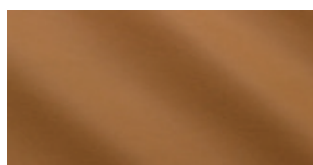
LX21



LX26



LX09



LX10



LX16



LX18



LX04



LX01

LINEA

IT

Dimensione

4.8 - 5.0m² | 52 - 54sqft

Spessore (mm)

~0.9 - 1.1mm

CERTIFICAZIONI

DER BLAUER ENGEL
COUNCIL DIRECTIVE 2014/90/EU

EN

Size

4.8 - 5.0m² | 52 - 54sqft

Thickness (mm)

~0.9 - 1.1mm

CERTIFICATIONS

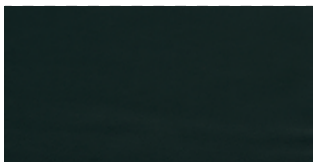
DER BLAUER ENGEL
COUNCIL DIRECTIVE 2014/90/EU

RIVESTIMENTO DISPONIBILE/ UPHOLSTERY AVAILABLE

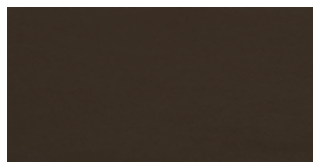
- ITALIA
- NULITE
- LIGHT
- SMARTOFFICE
- SMARTLIGHT
- ONE
- CLOP
- SEA SHELL
- TIMELESS
- AMARCORD
- PONTE
- CUBE
- BLOOM
- FRAME
- EPOCA
- CLUSTER
- NESTAR
- AIRE JR



TP940



TP959



TP927



TP935



TP942



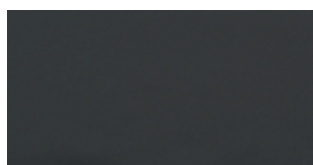
TP901



TP949



TP910



TP956



TP937

ELMOCOAST

IT

Origine

Bovini Scandinavi

Spessore

1,1/1,3 mm

Resistenza alla luce

ISO 105-B02: valore 5

Resistenza allo sfregamento

ISO 11640: asciutto 150

ISO 11640: bagnato 1000

ISO 11640: sudore 80/4

Finish adhesion

ISO 11644: valore 3.5N/cm

Resistenza alla lacerazione

ISO 3377-1: valore 15N

EN

Origin

Scandinavian Cattle

Thickness

1,1/1,3 mm

Lightfastness

ISO 105-B02: value 5

Rubbing

ISO 11640: wet 150

ISO 11640: dry 1000

ISO 11640: sweat 80/4

Finish adhesion

ISO 11644: value 3.5N/cm

Tear strenght

ISO 3377-1: value 15N

RIVESTIMENTO DISPONIBILE/ UPHOLSTERY AVAILABLE

- ITALIA
- NULITE
- LIGHT
- SMARTOFFICE
- SMARTLIGHT
- ONE
- CLOP
- SEA SHELL
- TIMELESS
- AMARCORD
- PONTE
- CUBE
- BLOOM
- FRAME
- EPOCA
- CLUSTER
- NESTAR
- AIRE JR



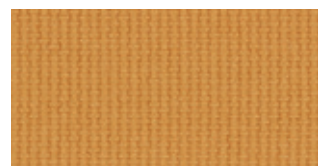
NO09



NO01



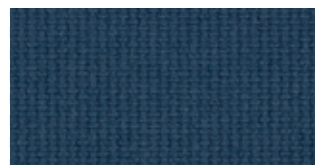
NO02



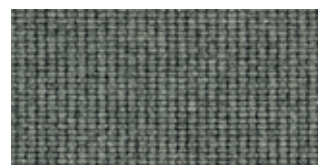
NO03



NO04



NO05



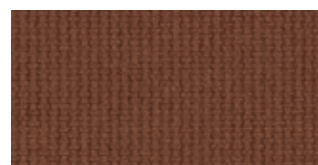
NO06



NO07



NO08



NO10

NOBEL

IT

Composizione

100% Lana Nuova Zelanda

Peso

800 g/lm — 25.8 oz/lin.yd

Altezza

140 cm — 55 inches

PERFORMANCE

Abrasione

75,000 — cicli martindale (EN ISO 12947-2)
50,000 — cicli martindale (ASTM D4966)

Pilling

4-5 — scale 1-5, max. 5 (EN ISO 12945-2)

Resistenza alla luce

5-7 — scale 1-8, max. 8 (EN ISO 105-B02)

Resistenza allo sfregamento

4-5/4-5 — scale 1-5, max. 5 (EN ISO 105x12)

INFIAMMABILITÀ

Certificati

BS EN 1021 1&2 Sigarette e fiammiferi

BS 5852 Part 1 0,1 Sigarette e fiammiferi

BS 5852 Crib 5

Class Uno UNI 9175 Class 1 I EMME

IMO MSC 307(88) Annex 1 part 8

IMO MSC 307(88) Annex 1 part 8 UK

MED Certificato IMO

MED Certificato IMO UK

CA TB 117-2013

ASTM E 84 Class 2(non aderito)

US ACT

Pass

AATCC 8 or 116 bagnato/umido

CA TB 117-2013

ASTM E 84 Class 2(non aderito)

ASTM D4966 Martindale

ASTM D4970 Pilling

AATCC 16 Resistenza alla luce

EN

Composition

100% New Zealand wool

Weight

800 g/lm — 25.8 oz/lin.yd

Width

140 cm — 55 inches

PERFORMANCE

Abrasion

75,000 — rubs martindale (EN ISO 12947-2)
50,000 — rubs martindale (ASTM D4966) (heavy duty upholstery)

Pilling

4-5 — scale 1-5, max. 5 (EN ISO 12945-2)

Light fastness

5-7 — scale 1-8, max. 8 (EN ISO 105-B02)

Rubbing fastness dry/wet

4-5/4-5 — scale 1-5, max. 5 (EN ISO 105x12)

FLAMMABILITY

Certificates

BS EN 1021 1&2 Cigarette and Match

BS 5852 Part 1 0,1 Cigarette & Match, The Furniture and Furnishing Regulations 1988

BS 5852 Crib 5

Class Uno UNI 9175 Class 1 I EMME

IMO MSC 307(88) Annex 1 part 8

IMO MSC 307(88) Annex 1 part 8 UK

MED Certificate IMO

MED Certificate IMO UK

CA TB 117-2013

ASTM E 84 Class 2(Unadhered)

US ACT

Pass

AATCC 8 or 116 Dry/wet crocking

CA TB 117-2013

ASTM E 84 Class 2(Unadhered)

ASTM D4966 Martindale (heavy duty)

ASTM D4970 Pilling

AATCC 16 Light fastness

RIVESTIMENTO DISPONIBILE/ UPHOLSTERY AVAILABLE

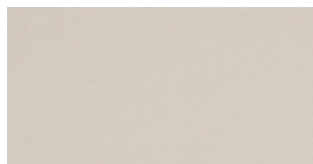
- CLOP
- SEA SHELL
- TIMELESS
- AMARCORD
- PONTE
- CUBE
- BLOOM
- FRAME
- EPOCA
- CLUSTER
- NESTAR
- AIRE JR



SA07



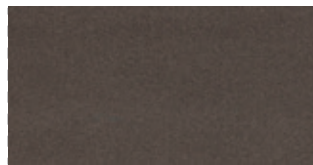
SA02



SA04



SA05



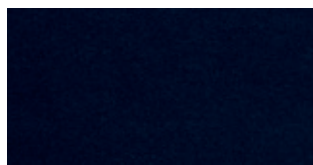
SA08



SA09



SA10



SA11



SA14

SAVOY

IT

Composizione
100% Trevira CS

Peso
600 g/lm — 19.35 oz/lin.yd

Altezza
140 cm — 55 inches

PERFORMANCE

Abrasione
100,000 — cicli martindale (EN ISO 12947-2)
100,000 — cicli (ASTM D4157)

Pilling
5 — scale 1-5, max. 5 (EN ISO 12945-2)

Resistenza alla luce
5-8 — scale 1-8, max. 8 (EN ISO 105-B02)

Resistenza allo sfregamento
4-5/4-5 — scale 1-5, max. 5 (EN ISO 105x12)

INFIAMMABILITÀ

Certificati
BS EN 1021-1 Sigarette
BS EN 1021-2 Fiammiferi
BS 5852 Crib 5
DIN 4102 - B1
NF P 92-503/504/505 M1
AM 18 - NF D 60-013
Classe Uno UNI 9175 Class 1 IM
DIN EN 13501-1 B-s1,d0
CA TB 117-2013
NFPA 701

US ACT

Pass
AATCC 8 or 116 bagnato/umido CA TB 117-2013
NFPA 701 Abrasione
100k ASTM D3511 Pilling
AATCC 16 Resistenza alla luce

EN

Composition
100% Trevira CS

Weight
600 g/lm — 19.35 oz/lin.yd

Width
140 cm — 55 inches

PERFORMANCE

Abrasion
100,000 — rubs martindale (EN ISO 12947-2)
100,000 — double rubs wyzenbeek (ASTM D4157)
(heavy duty upholstery)

Pilling
5 — scale 1-5, max. 5 (EN ISO 12945-2)

Light fastness
5-8 — scale 1-8, max. 8 (EN ISO 105-B02)

Rubbing fastness dry/wet
4-5/4-5 — scale 1-5, max. 5 (EN ISO 105x12)

FLAMMABILITY

Certificates
BS EN 1021-1 Cigarette
BS EN 1021-2 Match
BS 5852 Crib 5
DIN 4102 - B1
NF P 92-503/504/505 M1
AM 18 - NF D 60-013-(only for fabric)
Class Uno UNI 9175 Class 1 I EMME
DIN EN 13501-1 B-s1,d0
CA TB 117-2013
NFPA 701

US ACT

Pass
AATCC 8 or 116 Dry/wet crocking
CA TB 117-2013
NFPA 701
ASTM D4157-07 Wyz abrasion (heavy duty)
100k ASTM D3511 Pilling
AATCC 16 Light fastness

RIVESTIMENTO DISPONIBILE/ UPHOLSTERY AVAILABLE

- CLOP
- SEA SHELL
- TIMELESS
- AMARCORD
- PONTE
- CUBE
- BLOOM
- FRAME
- EPOCA
- CLUSTER
- NESTAR
- AIRE JR

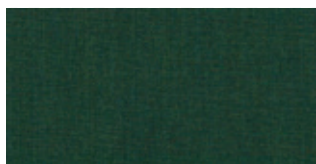
TESSUTO
REMIX 3

CATEGORIA K
CATEGORY K

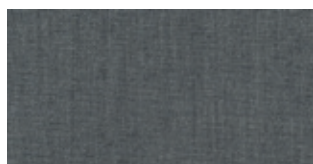
kvadrat



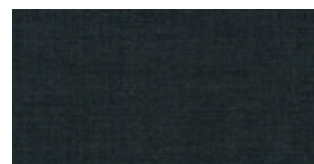
2033



2020



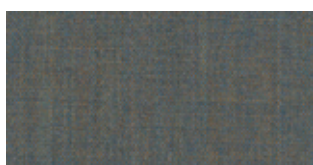
2026



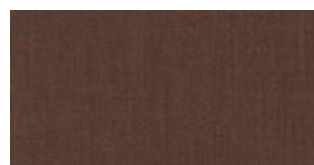
2027



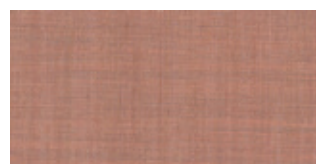
2038



2024



2016



2012



2035



2046

REMIX 3

IT

Composizione

90% new wool, worsted 10% nylon

Peso

420 g/lin. m (13.55 oz/ly)

Altezza

Approx. 140 cm (Approx. 55")

PERFORMANCE

Durabilità

100,000 Martindale

Pilling

4 (ISO 1-5)

Resistenza alla luce

6 — ISO 105-B02

TEST RESISTENZA AL FUOCO

NF D 60 013

US Cal. Bull. 117-2013

EN 1021-1/2

IMO FTP Codice 2010 Part 8

ÖNORM B1/Q1

GB 50222 B1 con trattamento (Chinese)

BS 5852 part 1

ASTM E84 Classe A

UNI 9175 1IM

NFPA 260

AS/NZS 1530.3

AS/NZS 3837 classe 2

EN 13501 B-s2, d0

IMO FTP Code 2010 Part 7 con trattamento

SN 198 898 5.3 con trattamento

ASTM E84 Classe A

BS 5852 crib 5 con trattamento

EN

Composition

90% new wool, worsted 10% nylon

Weight

420 g/lin. m (13.55 oz/ly)

Width

Approx. 140 cm (Approx. 55")

PERFORMANCE

Durability

100,000 Martindale

Pilling

4 (ISO 1-5)

Light fastness

6 — ISO 105-B02

FIRE TESTS

NF D 60 013

US Cal. Bull. 117-2013

EN 1021-1/2

IMO FTP Code 2010 Part 8

ÖNORM B1/Q1

GB 50222 B1 with treatment (Chinese)

BS 5852 part 1

ASTM E84 Class A Adhered

UNI 9175 1IM

NFPA 260

AS/NZS 1530.3

AS/NZS 3837 class 2

EN 13501 B-s2, d0 with treatment

IMO FTP Code 2010 Part 7 with treatment

SN 198 898 5.3 with treatment

ASTM E84 Class A Unadhered

BS 5852 crib 5 with treatment

RIVESTIMENTO DISPONIBILE/ UPHOLSTERY AVAILABLE

- ITALIA
- NULITE
- LIGHT
- SMARTOFFICE
- SMARTLIGHT
- ONE
- IKIGAI
- OVERTIME
- SMARTBACK
- SWITCH
- NEAT
- POP
- POST
- CLOP
- SEA SHELL
- TIMELESS
- AMARCORD
- PONTE
- CUBE
- BLOOM
- FRAME
- EPOCA
- CLUSTER
- NESTAR
- AIRE JR

TESSUTO
TERRA

CATEGORIA K
CATEGORY K

FIDIVI*



TE01



TE02



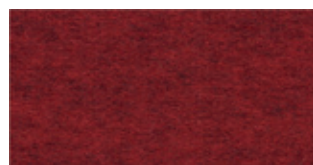
TE03



TE04



TE05



TE06



TE07



TE08



TE09



TE10

TERRA

IT

Composizione

80% Lana - 20% Poliammide

Peso

630 g/lm - 450 g/m²

Altezza

140 cm

Resistenza all'abrasione

ISO 12947-2 (Martindale)

Resistenza alla luce

ISO 105-B02 (Xenotest)

Resistenza allo sfregamento

ISO 105-X12 (Crockmeter)

Pilling (2000 tours) - Pilling (2000 scheuertouren)

ISO 12945-2

RESISTENZA AL FUOCO

CAN MEET:

UNI 9175 Class 1 IM EN 1021-1 & 2

EN

Composition

80% Wool - 20% Polyamide

Weight

630 g/lm - 450 g/m²

Width

140 cm

Abrasion resistance

ISO 12947-2 (Martindale)

Light fastness

ISO 105-B02 (Xenotest)

Fastness to rubbing

ISO 105-X12 (Crockmeter)

Pilling (2000 tours) - Pilling (2000 scheuertouren)

ISO 12945-2

FIRE RESISTANCE

CAN MEET:

UNI 9175 Class 1 IM EN 1021-1 & 2

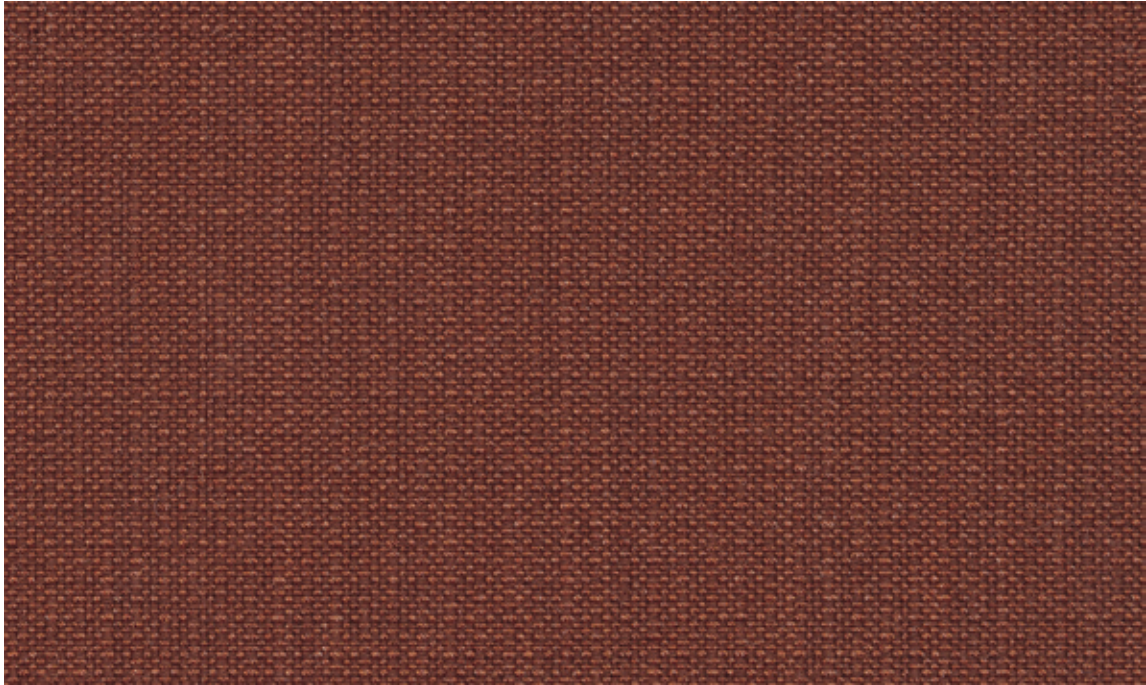
RIVESTIMENTO DISPONIBILE/ UPHOLSTERY AVAILABLE

- CLOP
- SEA SHELL
- TIMELESS
- AMARCORD
- PONTE
- CUBE
- BLOOM
- FRAME
- EPOCA
- CLUSTER
- NESTAR
- AIRE JR
- ESSENZIALE

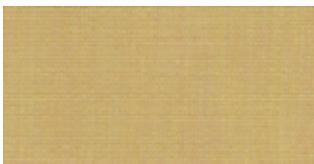
TESSUTO
CRISP

CATEGORIA K
CATEGORY K

Gabriel



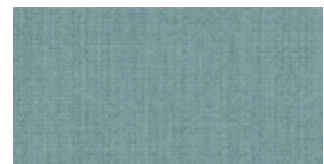
CR01



CR02



CR03



CR04



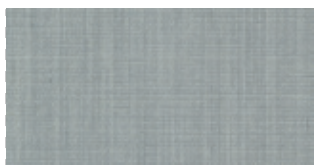
CR05



CR06



CR07



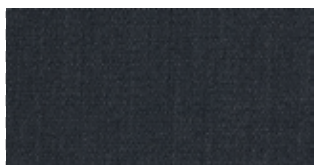
CR08



CR09



CR10



CR11

CRISP

IT

Composizione

93% Lana Nuova Zelanda, 7% Poliamide

Peso

460 g/lm — 14.84 oz/lin.yd

Altezza

140 cm — 55 inches

PERFORMANCE

Abrasion

200,000 — cicli martindale (EN ISO 12947-2)

200,000 — cicli martindale (ASTM D4966)

Pilling

4-5 — scale 1-5, max. 5 (EN ISO 12945-2)

Resistenza alla luce

5-7 — scale 1-8, max. 8 (EN ISO 105-B02)

Resistenza allo sfregamento

4-5/4-5 — scale 1-5, max. 5 (EN ISO 105x12)

INFIAMMABILITÀ

Certificazioni

BS 5852 Part 1 0,1

sigarette e fiammiferi

1988 BS 476 Parte 7 classe 2

BS EN 1021 1&2 sigarette e fiammiferi

Classe Uno UNI 9175 Class 1 IM

CA TB 117-2013

IMO MSC 307(88) Annex 1 part 8

MED Certificato IMO

IMO MSC 307(88) Annex 1 part 8 UK

MED Certificato IMO UK

ÖNORM A3800-B2-B3825-Q1 UK

US ACT

Pass

AATCC 8 or 116 bagnato/umido

AATCC 8 or 116 bagnato/umido

ASTM D4966 Cicli Martindale

ASTM D4966 Cicli Martindale

ASTM D4970 Pilling

ASTM D4970 Pilling

AATCC 16 Resistenza alla luce

AATCC 16 Resistenza alla luce

CA TB 117-2013

CA TB 117-2013

EN

Composition

93% New Zealand wool, 7% Polyamide

Weight

460 g/lm — 14.84 oz/lin.yd

Width

140 cm — 55 inches

PERFORMANCE

Abrasion

200,000 — rubs martindale (EN ISO 12947-2)

200,000 — rubs martindale (ASTM D4966)

(heavy duty upholstery)

Pilling

4-5 — scale 1-5, max. 5 (EN ISO 12945-2)

Light fastness

5-7 — scale 1-8, max. 8 (EN ISO 105-B02)

Rubbing fastness dry/wet

4-5/4-5 — scale 1-5, max. 5 (EN ISO 105x12)

FLAMMABILITY

Certificates

BS 5852 Part 1 0,1 Cigarette & Match,

The Furniture and Furnishing Regulations 1988

BS 476 Part 7 class 2

BS EN 1021 1&2 Cigarette and Match

Class Uno UNI 9175 Class 1 I EMME

CA TB 117-2013

IMO MSC 307(88) Annex 1 part 8

MED Certificate IMO

IMO MSC 307(88) Annex 1 part 8 UK

MED Certificate IMO UK

ÖNORM A3800-B2-B3825-Q1 UK

US ACT

Pass

AATCC 8 or 116 Dry/wet crocking

AATCC 8 or 116 Dry/wet crocking

ASTM D4966 Martindale (heavy duty)

ASTM D4966 Martindale (heavy duty)

ASTM D4970 Pilling

ASTM D4970 Pilling

AATCC 16 Light fastness

AATCC 16 Light fastness

CA TB 117-2013

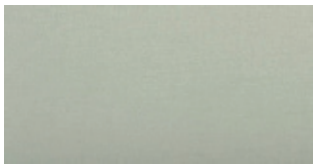
CA TB 117-2013

RIVESTIMENTO DISPONIBILE/ UPHOLSTERY AVAILABLE

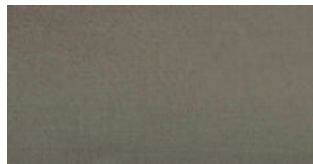
- ITALIA
- NULITE
- LIGHT
- SMARTOFFICE
- SMARTLIGHT
- ONE
- IKIGAI
- OVERTIME
- SMARTBACK
- SWITCH
- NEAT
- POP
- POST
- CLOP
- SEA SHELL
- TIMELESS
- AMARCORD
- PONTE
- CUBE
- BLOOM
- FRAME
- EPOCA
- CLUSTER
- NESTAR
- AIRE JR



JU04



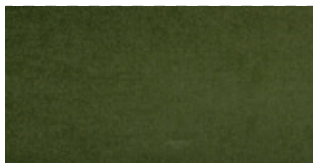
JU01



JU02



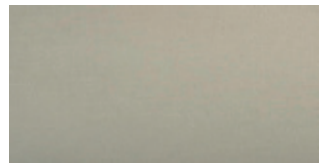
JU03



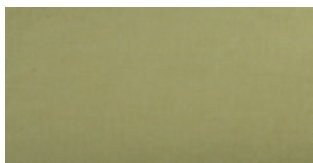
JU05



JU06



JU07



JU08

JUNO

IT

Composizione

100% PESFR

Peso

340 g/m²

Altezza

140 cm

INFIAMMABILITÀ

Certificati

UNI 9175 classe 1IM

EN 1021-1

EN 1021-2

BS 5852 test sigarette

BS 5852

BS 5852 crib 5

NF P 92 503-507 M1

DIN 4102 B1

IMO FTP CODE 2010

TB 117:2013

EN

Composition

100% PES FR

Weight

340 g/m²

Width

140 cm

FLAMMABILITY

Certificates

UNI 9175 classe 1IM

EN 1021-1

EN 1021-2

BS 5852 cigarette test

BS 5852 match test

BS 5852 crib 5

NF P 92 503-507 M1

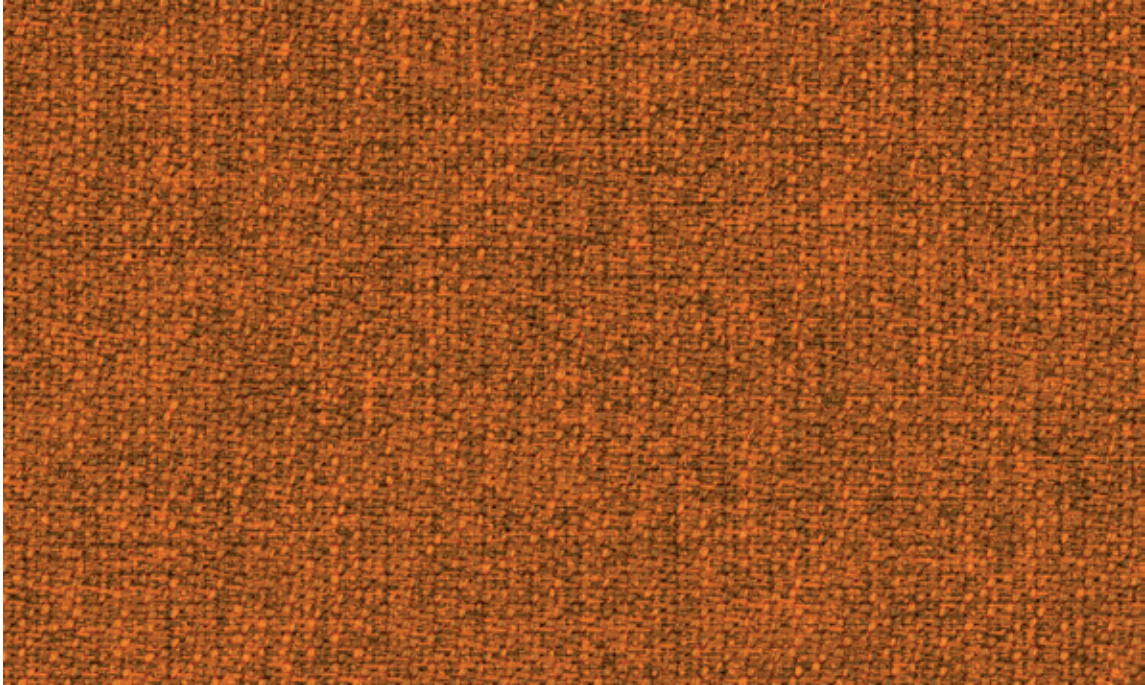
DIN 4102 B1

IMO FTP CODE 2010

TB 117:2013

RIVESTIMENTO DISPONIBILE/ UPHOLSTERY AVAILABLE

- CLOP
- SEA SHELL
- TIMELESS
- AMARCORD
- PONTE
- CUBE
- BLOOM
- FRAME
- EPOCA
- CLUSTER
- NESTAR
- AIRE JR
- ESSENZIALE



SM15



SM01



SM02



SM04



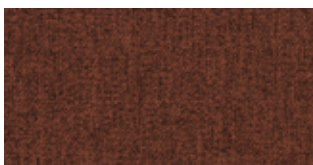
SM07



SM09



SM13



SM14



SM16



SM17



SM18



SM19

STEP MELANGE

IT

Composizione
100% Trevira CS

Peso
470 g/lm — 15.16 oz/lin.yd

Altezza
140 cm — 55 inches

PERFORMANCE

Abrasion
100,000 — cicli martindale (EN ISO 12947-2)
100,000 — cicli (ASTM D4157)

Pilling
4-5 — scale 1-5, max. 5 (EN ISO 12945-2)

Resistenza alla luce
5-7 — scale 1-8, max. 8 (EN ISO 105-B02)

Resistenza allo sfregamento
4-5/4-5 — scale 1-5, max. 5 (EN ISO 105x12)

INFIAMMABILITÀ

Certificati
DIN 4102 - B1
NF P 92-503/504/505 M1
BS EN 1021 1&2 Sigarette e fiammiferi
BS EN 1021-1 Sigarette
BS 5852 Crib 5
ÖNORM A3800-B1-B3825-Q1 UK
FAR/JAR 25.853 (a) (i) (ii)
AM 18 - NF D 60-013
CA TB 117-2013
Classe Uno UNI 9175 Classe 1 IM
DIN EN 13501-1 B-s1,d0
DIN EN 13501-1 B-s1,d0
IMO MSC 307(88) Annex 1 part 8
IMO MSC 307(88) Annex 1 part 8 UK
MED Certificato IMO
MED Certificato IMO UK
CAN/ ULC-S102.2
CAN/ULC-S109
NFPA 701

US ACT

Pass
ASTM D4157-07 abrasione 100k
ASTM D3511 Pilling
CA TB 117-2013
NFPA 701
AATCC 16 Resistenza alla luce
AATCC 8 or 116 bagnato/umido

RIVESTIMENTO DISPONIBILE/ UPHOLSTERY AVAILABLE

- ITALIA
- NULITE
- LIGHT
- SMARTOFFICE
- SMARTLIGHT
- ONE
- IKIGAI
- OVERTIME
- SMARTBACK
- SWITCH
- NEAT
- POP
- POST
- CLOP
- SEA SHELL
- TIMELESS
- AMARCORD
- PONTE
- CUBE
- BLOOM
- FRAME
- EPOCA
- CLUSTER
- NESTAR
- AIRE JR

EN

Composition
100% Trevira CS

Weight
470 g/lm — 15.16 oz/lin.yd

Width
140 cm — 55 inches

PERFORMANCE

Abrasion
100,000 — rubs martindale (EN ISO 12947-2)
100,000 — double rubs wyzenbeek (ASTM D4157)
(heavy duty upholstery)

Pilling
4-5 — scale 1-5, max. 5 (EN ISO 12945-2)

Light fastness
5-7 — scale 1-8, max. 8 (EN ISO 105-B02)

Rubbing fastness dry/wet
4-5/4-5 — scale 1-5, max. 5 (EN ISO 105x12)

FLAMMABILITY

Certificates
DIN 4102 - B1
NF P 92-503/504/505 M1
BS EN 1021 1&2 Cigarette and Match
BS EN 1021-1 Cigarette
BS 5852 Crib 5
ÖNORM A3800-B1-B3825-Q1 UK
FAR/JAR 25.853 (a) (i) (ii)
AM 18 - NF D 60-013-(only for fabric)
CA TB 117-2013
Class Uno UNI 9175 Class 1 I EMME
DIN EN 13501-1 B-s1,d0
DIN EN 13501-1 B-s1,d0
IMO MSC 307(88) Annex 1 part 8
IMO MSC 307(88) Annex 1 part 8 UK
MED Certificate IMO
MED Certificate IMO UK
CAN/ ULC-S102.2
CAN/ULC-S109
NFPA 701

US ACT

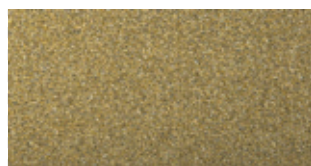
Pass
ASTM D4157-07 Wyz abrasion (heavy duty) 100k
ASTM D3511 Pilling
CA TB 117-2013
NFPA 701
AATCC 16 Light fastness
AATCC 8 or 116 Dry/wet crocking



GY02



GY04



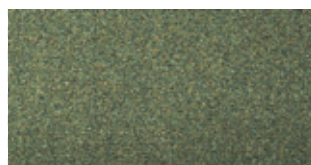
GY06



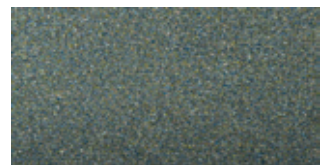
GY08



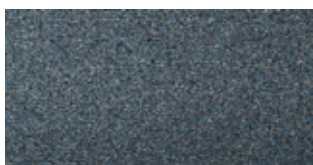
GY10



GY12



GY14



GY16

GYRE

IT

Composizione
100% Revive (PP)

Peso
440 g/m²

Altezza
140 cm

RESISTENZA AL FUOCO
TB 117:2013

EN

Composition
100% Revive (PP)

Weight
440 g/m²

Width
140 cm

FIRE RESISTANCE
TB 117:2013

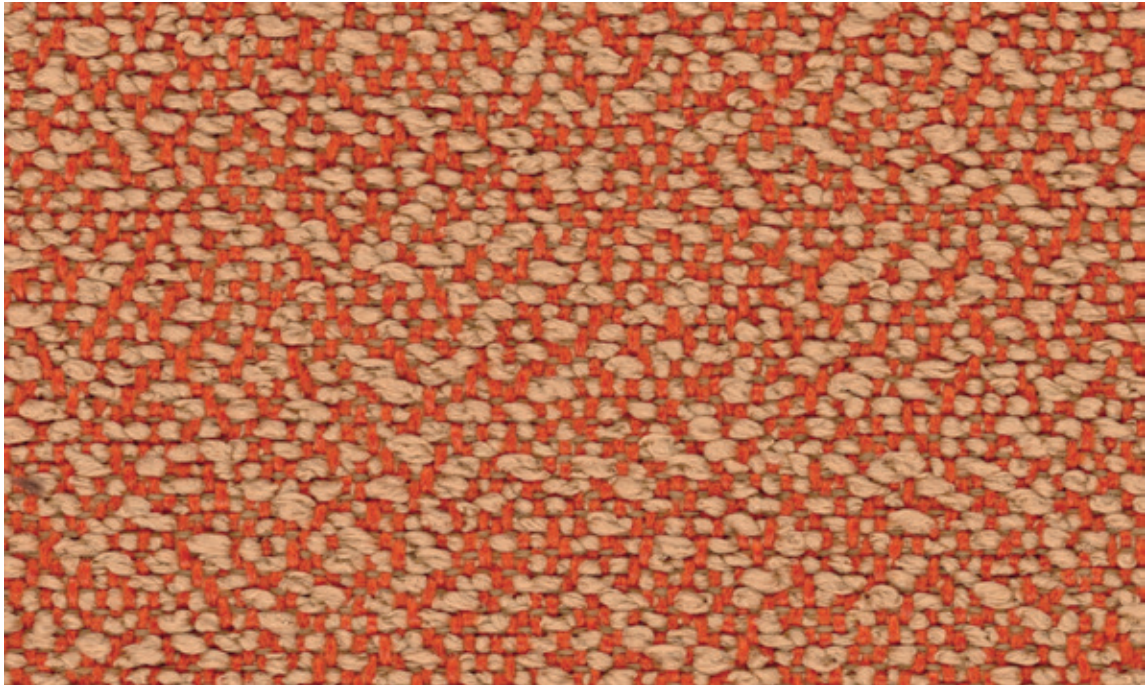
RIVESTIMENTO DISPONIBILE/ UPHOLSTERY AVAILABLE

- ITALIA
- NULITE
- LIGHT
- SMARTOFFICE
- SMARTLIGHT
- ONE
- IKIGAI
- OVERTIME
- SMARTBACK
- SWITCH
- NEAT
- POP
- POST
- CLOP
- SEA SHELL
- TIMELESS
- AMARCORD
- PONTE
- CUBE
- BLOOM
- FRAME
- EPOCA
- CLUSTER
- NESTAR
- AIRE JR
- ESSENZIALE

TESSUTO
FIOCCO

CATEGORIA D
CATEGORY D

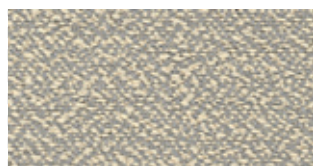
FIDIVI*



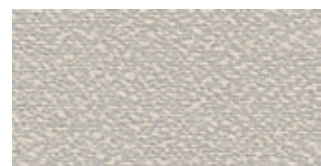
FI06



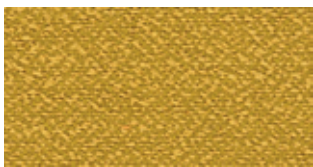
FI01



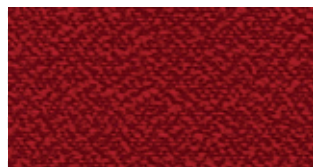
FI02



FI03



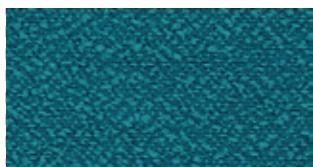
FI04



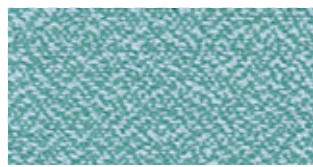
FI05



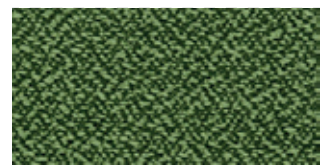
FI07



FI08



FI09



FI10

FIOCCO

IT

Composizione

100% Poliestere Trevira CS

Peso

630 g/lm - 450 g/m²

Altezza

140 cm

Resistenza all'abrasione

ISO 12947-2 (Martindale)

Resistenza alla luce

SO 105-B02 (Xenotest)

Resistenza allo sfregamento

ISO 105-X12 (Crockmeter)

Pilling (2000 tours) - Pilling (2000 scheuertouren)

ISO 12945-2

RESISTENZA AL FUOCO

CAN MEET

UNI 9174 - 8456 CLASS C1

UNI 9175 CLASS 1 IM

DIN 4102 CLASS B1

NF 92501-7 CLASS M1

NF D 60013 CLASS AM18

EN 1021-1 & 2

BS CRIB 5

BS 7176 CLASS MEDIUM HAZARD

EN 13773 CLASS 1 OENORM 3800-1 CLASS B1,Q1,

TR1 CALIFORNIA TB117

USA NFPA 701

USA NFPA 260

IMO PART 8 UPHOLSTERY

EN

Composition

100% Polyester Trevira CS

Weight

630 g/lm - 450 g/m²

Width

140 cm

Abrasion resistance

ISO 12947-2 (Martindale)

Light fastness

SO 105-B02 (Xenotest)

Fastness to rubbing

ISO 105-X12 (Crockmeter)

Pilling (2000 tours) - Pilling (2000 scheuertouren)

ISO 12945-2

FIRE RESISTANCE

CAN MEET

UNI 9174 - 8456 CLASS C1

UNI 9175 CLASS 1 IM

DIN 4102 CLASS B1

NF 92501-7 CLASS M1

NF D 60013 CLASS AM18

EN 1021-1 & 2

BS CRIB 5

BS 7176 CLASS MEDIUM HAZARD

EN 13773 CLASS 1 OENORM 3800-1 CLASS B1,Q1,

TR1 CALIFORNIA TB117

USA NFPA 701

USA NFPA 260

IMO PART 8 UPHOLSTERY

RIVESTIMENTO DISPONIBILE/ UPHOLSTERY AVAILABLE

- CLOP
- SEA SHELL
- TIMELESS
- AMARCORD
- PONTE
- CUBE
- BLOOM
- FRAME
- EPOCA
- CLUSTER
- NESTAR
- AIRE JR
- ESSENZIALE

TESSUTO
INCA RIO

CATEGORIA C
CATEGORY C

novartiplast italia
High Performance Quality Leather



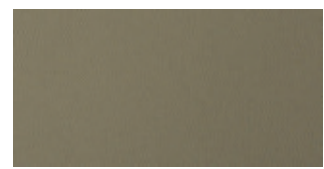
IC02



IC04



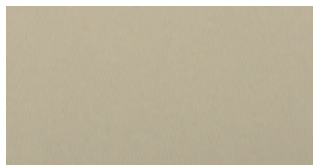
IC06



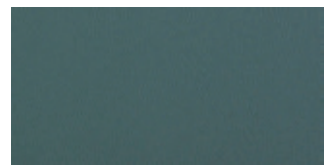
IC08



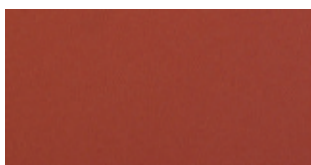
IC10



IC12



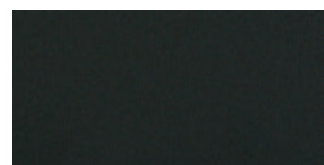
IC14



IC16



IC18



IC20

INCA RIO

IT

Aspetto

pelle liscia

Composizione

88% VINYL / 1% PU / 7% PES / 4% CO

Peso

670 gr/m2

Altezza

140 cm

Resistenza all'acetone

UNI 4818 - P.16

Resistenza salinità (acqua marina)

UNI EN ISO 105-E02:2013

Resistenza alla candeggina

UNI EN ISO 105-X12:2003 Using 3% Sodium Hypochlorite

Resistenza all'acqua

UNI EN ISO 105-X12:2003 Using alcohol

RESISTENZA AL FUOCO

EU: UNI EN ISO 1021 PART 1 & PART 2

IT: CLASSE 1IM - UNI 9175

UK: BS5892 SOURCE 0 & 1

US: CAL TB 117

EN

Aspect

Smooth leather look

Composition

88% VINYL / 1% PU / 7% PES / 4% CO

Weight

670 gr/m2

Width

140 cm

Acetone resistant

UNI 4818 - P.16

Salinity resistant (sea water)

UNI EN ISO 105-E02:2013

Bleach resistant

UNI EN ISO 105-X12:2003 Using 3% Sodium Hypochlorite

Alcohol resistant

UNI EN ISO 105-X12:2003 Using alcohol

FIRE RESISTANCE

EU: UNI EN ISO 1021 PART 1 & PART 2

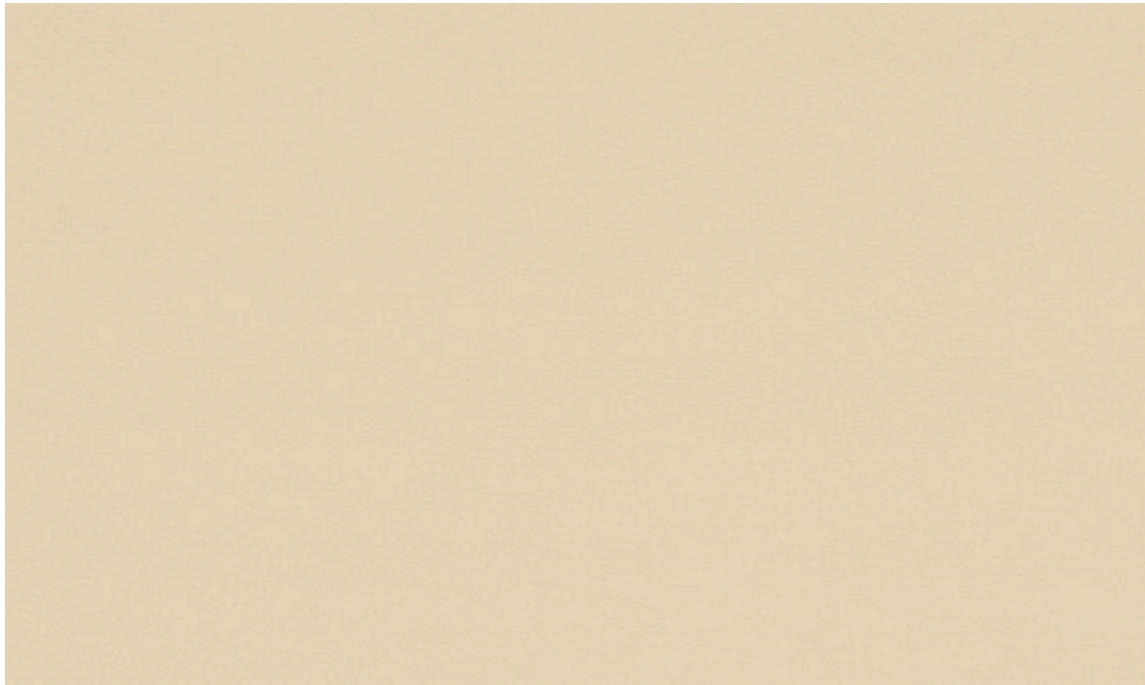
IT: CLASSE 1IM - UNI 9175

UK: BS5892 SOURCE 0 & 1

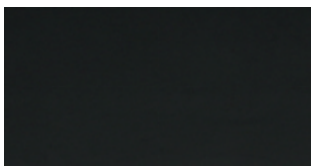
US: CAL TB 117

RIVESTIMENTO DISPONIBILE/ UPHOLSTERY AVAILABLE

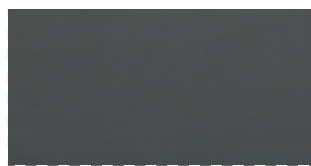
- ITALIA
- NULITE
- LIGHT
- SMARTOFFICE
- SMARTLIGHT
- ONE
- CLOP
- SEA SHELL
- TIMELESS
- AMARCORD
- PONTE
- CUBE
- BLOOM
- FRAME
- EPOCA
- CLUSTER
- NESTAR
- AIRE JR
- ESSENZIALE



603



649



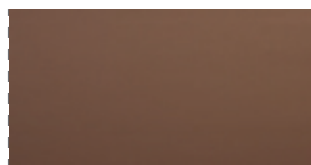
604



605



606



610



619



621



633



609



611



601



602

SECRET

IT

Composizione

76% PVC - 22% PES - 2% PU

Peso

540 +/- 10 g/m2

Altezza

140 cm

RESISTENZA AL FUOCO

UNI 9175 classe 1IM

EN 1021-1

EN 1021-2

BS 5852-1 cigarette test

BS 5852-1 match test

TB 117:2013

EN

Composition

76% PVC - 22% PES - 2% PU

Weight

540 +/- 10 g/m2

Width

140 cm

FIRE RESISTANCE

UNI 9175 classe 1IM

EN 1021-1

EN 1021-2

BS 5852-1 cigarette test

BS 5852-1 match test

TB 117:2013

RIVESTIMENTO DISPONIBILE/ UPHOLSTERY AVAILABLE

- ITALIA
- NULITE
- LIGHT
- SMARTOFFICE
- SMARTLIGHT
- ONE
- CLOP
- SEA SHELL
- TIMELESS
- AMARCORD
- PONTE
- CUBE
- BLOOM
- FRAME
- EPOCA
- CLUSTER
- NESTAR
- AIRE JR
- ESSENZIALE



IN01



IN02



IN03



IN04



IN05



IN06



IN07



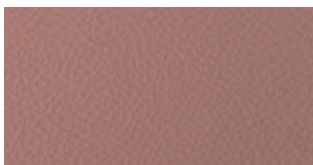
IN08



IN09



IN10



IN11

INCA

IT

Aspetto

Pelle con grana

Composizione

88% VINYL / 8% PES / 4% CO

Peso

650 gr/m2

Altezza

140 cm

Resistenza all'acetone

UNI 4818 - P.16

Resistenza salinità (acqua marina)

UNI EN ISO 105-E02:2013

Resistenza alla candeggina

UNI EN ISO 105-X12:2003 Using 3% Sodium Hypochlorite

Resistenza all'alcohol

UNI EN ISO 105-X12:2003 Using alcohol

RESISTENZA AL FUOCO

EU: UNI EN ISO 1021 PART 1 & PART 2

IT: CLASSE 1IM - UNI 9175

UK: BS5892 SOURCE 0 & 1

US: CAL TB 117

US: FMVSS 302

EN

Aspect

Grained leather look

Composition

88% VINYL / 8% PES / 4% CO

Weight

650 gr/m2

Width

140 cm

Acetone resistant

UNI 4818 - P.16

Salinity resistant (sea water)

UNI EN ISO 105-E02:2013

Bleach resistant

UNI EN ISO 105-X12:2003 Using 3% Sodium Hypochlorite

Alcohol resistant

UNI EN ISO 105-X12:2003 Using alcohol

FIRE RESISTANCE

EU: UNI EN ISO 1021 PART 1 & PART 2

IT: CLASSE 1IM - UNI 9175

UK: BS5892 SOURCE 0 & 1

US: CAL TB 117

US: FMVSS 302

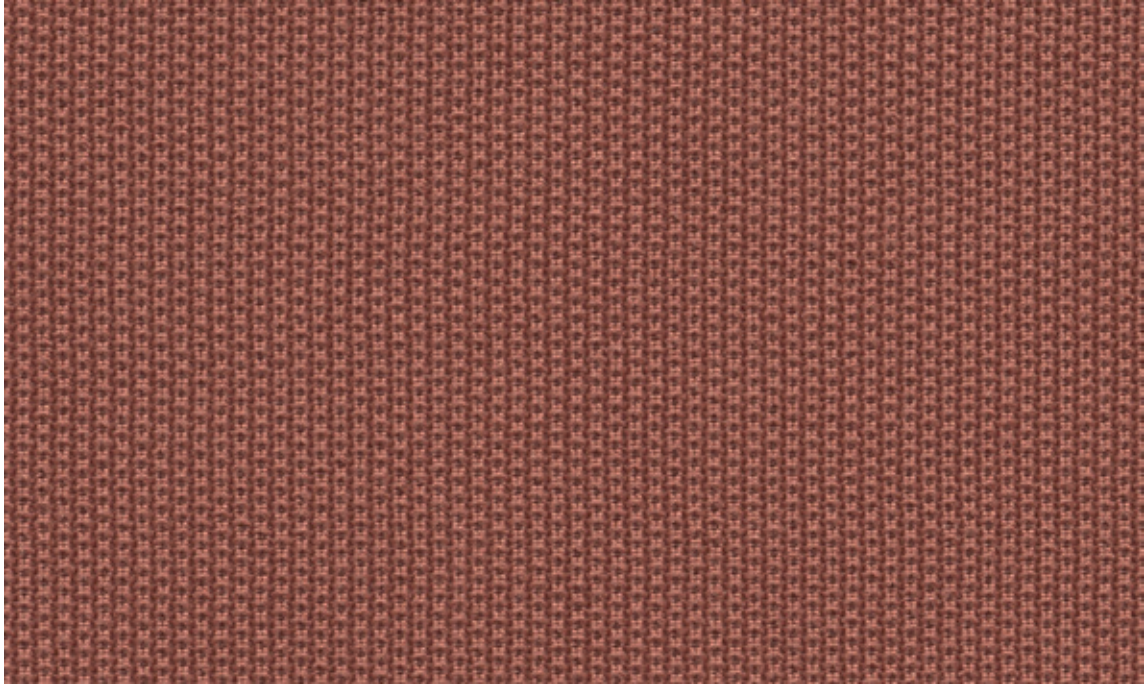
RIVESTIMENTO DISPONIBILE/ UPHOLSTERY AVAILABLE

- CUBE
- BLOOM
- EPOCA
- CLUSTER
- NESTAR
- AIRE JR
- ESSENZIALE

TESSUTO
ONE

CATEGORIA B
CATEGORY B

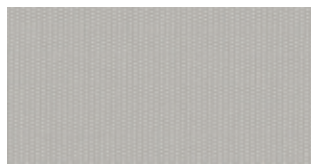
FIDIVI*



ON06



ON02



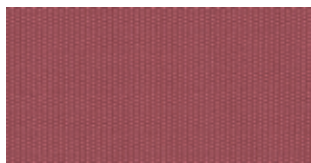
ON03



ON04



ON05



ON07



ON08



ON09



ON10



ON11

ONE

IT

Composizione

100% Poliestere Riciclato

Peso

525 g/lm - 350 g/m²

Altezza

150 cm

Resistenza all'abrasione

ISO 12947/2

Resistenza alla luce

ISO 105-B02

Resistenza allo sfregamento

ISO 105-X12

RESISTENZA AL FUOCO

1 IM (UNI 9175)

BS 7176

California TB 117

CRIB 5 (BS 5852 part II)

EN 1021-1&2

can meet

IMO for upholstery Part 8

EN

Composition

100% Recycled Polyester

Weight

525 g/lm - 350 g/m²

Width

150 cm

Abrasion resistance

ISO 12947/2

Light fastness

ISO 105-B02

Fastness to rubbing

ISO 105-X12

FIRE RESISTANCE

1 IM (UNI 9175)

BS 7176

California TB 117

CRIB 5 (BS 5852 part II)

EN 1021-1&2

can meet

IMO for upholstery Part 8

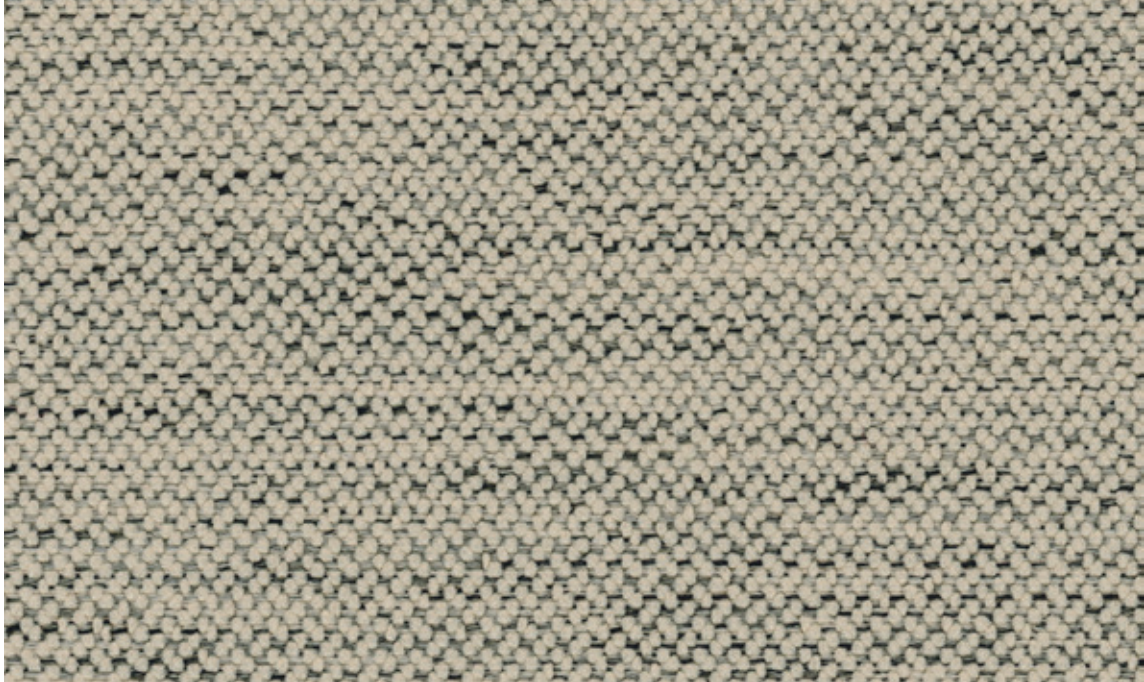
RIVESTIMENTO DISPONIBILE/ UPHOLSTERY AVAILABLE

- IKIGAI
- OVERTIME
- SMARTBACK
- SWITCH
- NEAT
- POP
- POST
- CUBE
- BLOOM
- SEA SHELL
- TIMELESS
- AMARCORD
- PONTE
- CUBE
- BLOOM
- EPOCA
- CLUSTER
- NESTAR
- AIRE JR
- ESSENZIALE

TESSUTO
DEMETRA

CATEGORIA B
CATEGORY B

FIDIVI*



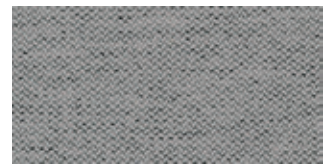
DE02



DE04



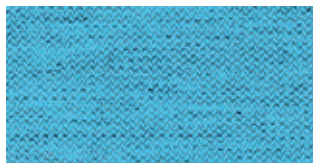
DE06



DE08



DE10



DE12



DE14



DE16

DEMETRA

IT

Composizione

60% Poliestere Riciclato - 40% Poliestere

Peso

420 g/ml - 300 g/m²

Altezza

140 cm

Resistenza all'abrasione:

ISO 12947-2 (Martindale)

Resistenza alla luce (scala di blu):

ISO 105-B02 (Xenotest)

Resistenza allo sfregamento (scala di grigi):

ISO 105-X12 (Crockmeter)

Pilling (2000 tours) - Pilling (2000 scheuertouren)

ISO 12945-2

RESISTENZA AL FUOCO

Can meet

UNI 9175 Class 1 IM

EN 1021-1 & 2

BS 5852 CRIB 5

BS 7176 Class Medium Hazard California

TB 117-2013

EN

Composition

60% Recycled Polyester - 40% Polyester

Weight

420 g/ml - 300 g/m²

Width

140 cm

Abrasion resistance (rubs)

ISO 12947-2 (Martindale)

Light fastness (blue scale)

ISO 105-B02 (Xenotest)

Fastness to rubbing (grey scale)

ISO 105-X12 (Crockmeter)

Pilling (2000 tours) - Pilling (2000 scheuertouren)

ISO 12945-2

FIRE RESISTANCE

Can meet

UNI 9175 Class 1 IM

EN 1021-1 & 2

BS 5852 CRIB 5

BS 7176 Class Medium Hazard California

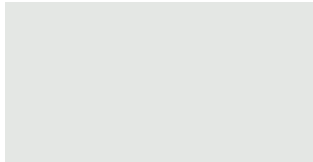
TB 117-2013

RIVESTIMENTO DISPONIBILE/ UPHOLSTERY AVAILABLE

- IKIGAI
- OVERTIME
- SMARTBACK
- SWITCH
- NEAT
- POP
- POST
- CUBE
- BLOOM
- SEA SHELL
- TIMELESS
- AMARCORD
- PONTE
- CUBE
- BLOOM
- EPOCA
- CLUSTER
- NESTAR
- AIRE JR
- ESSENZIALE



FINITURE/FINISHES



Bianco/White BI



Mattone/Copper CB



Grigio ignifugo/Grey fireretardant GG

PLASTICHE/PLASTICS



Nero/Black NE



Blu/Blue BL



Avorio/Ivory SB



Verde/Green VD



Giallo Senape/Mustard SE