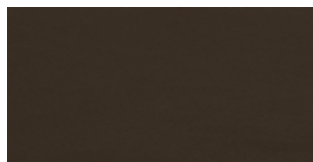


TP940



TP959



TP927



TP935



TP942



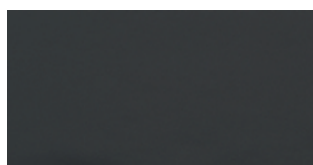
TP901



TP949



TP910



TP956



TP937

ELMOCOAST

IT

Origine

Bovini Scandinavi

Spessore

1,1/1,3 mm

Resistenza alla luce

ISO 105-B02: valore 5

Resistenza allo sfregamento

ISO 11640: asciutto 150

ISO 11640: bagnato 1000

ISO 11640: sudore 80/4

Finish adhesion

ISO 11644: valore 3.5N/cm

Resistenza alla lacerazione

ISO 3377-1: valore 15N

EN

Origin

Scandinavian Cattle

Thickness

1,1/1,3 mm

Lightfastness

ISO 105-B02: value 5

Rubbing

ISO 11640: wet 150

ISO 11640: dry 1000

ISO 11640: sweat 80/4

Finish adhesion

ISO 11644: value 3.5N/cm

Tear strenght

ISO 3377-1: value 15N

RIVESTIMENTO DISPONIBILE/ UPHOLSTERY AVAILABLE

- ITALIA
- NULITE
- LIGHT
- SMARTOFFICE
- SMARTLIGHT
- ONE
- CLOP
- SEA SHELL
- TIMELESS
- AMARCORD
- PONTE
- CUBE
- BLOOM
- FRAME
- EPOCA
- CLUSTER
- NESTAR
- AIRE JR

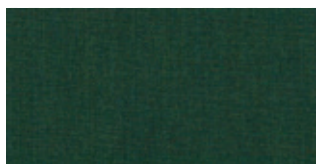
TESSUTO
REMIX 3

CATEGORIA K
CATEGORY K

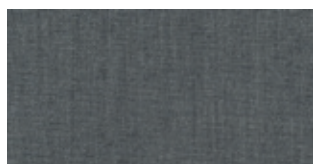
kvadrat



2033



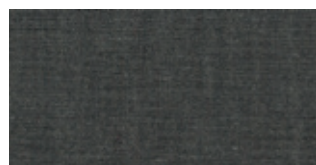
2020



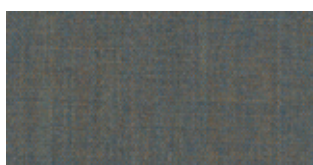
2026



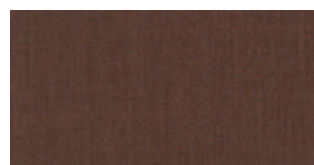
2027



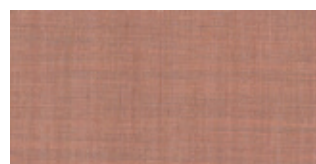
2038



2024



2016



2012



2035



2046

REMIX 3

IT

Composizione

90% new wool, worsted 10% nylon

Peso

420 g/lin. m (13.55 oz/ly)

Altezza

Approx. 140 cm (Approx. 55")

PERFORMANCE

Durabilità

100,000 Martindale

Pilling

4 (ISO 1-5)

Resistenza alla luce

6 — ISO 105-B02

TEST RESISTENZA AL FUOCO

NF D 60 013

US Cal. Bull. 117-2013

EN 1021-1/2

IMO FTP Codice 2010 Part 8

ÖNORM B1/Q1

GB 50222 B1 con trattamento (Chinese)

BS 5852 part 1

ASTM E84 Classe A

UNI 9175 1IM

NFPA 260

AS/NZS 1530.3

AS/NZS 3837 classe 2

EN 13501 B-s2, d0

IMO FTP Code 2010 Part 7 con trattamento

SN 198 898 5.3 con trattamento

ASTM E84 Classe A

BS 5852 crib 5 con trattamento

EN

Composition

90% new wool, worsted 10% nylon

Weight

420 g/lin. m (13.55 oz/ly)

Width

Approx. 140 cm (Approx. 55")

PERFORMANCE

Durability

100,000 Martindale

Pilling

4 (ISO 1-5)

Light fastness

6 — ISO 105-B02

FIRE TESTS

NF D 60 013

US Cal. Bull. 117-2013

EN 1021-1/2

IMO FTP Code 2010 Part 8

ÖNORM B1/Q1

GB 50222 B1 with treatment (Chinese)

BS 5852 part 1

ASTM E84 Class A Adhered

UNI 9175 1IM

NFPA 260

AS/NZS 1530.3

AS/NZS 3837 class 2

EN 13501 B-s2, d0 with treatment

IMO FTP Code 2010 Part 7 with treatment

SN 198 898 5.3 with treatment

ASTM E84 Class A Unadhered

BS 5852 crib 5 with treatment

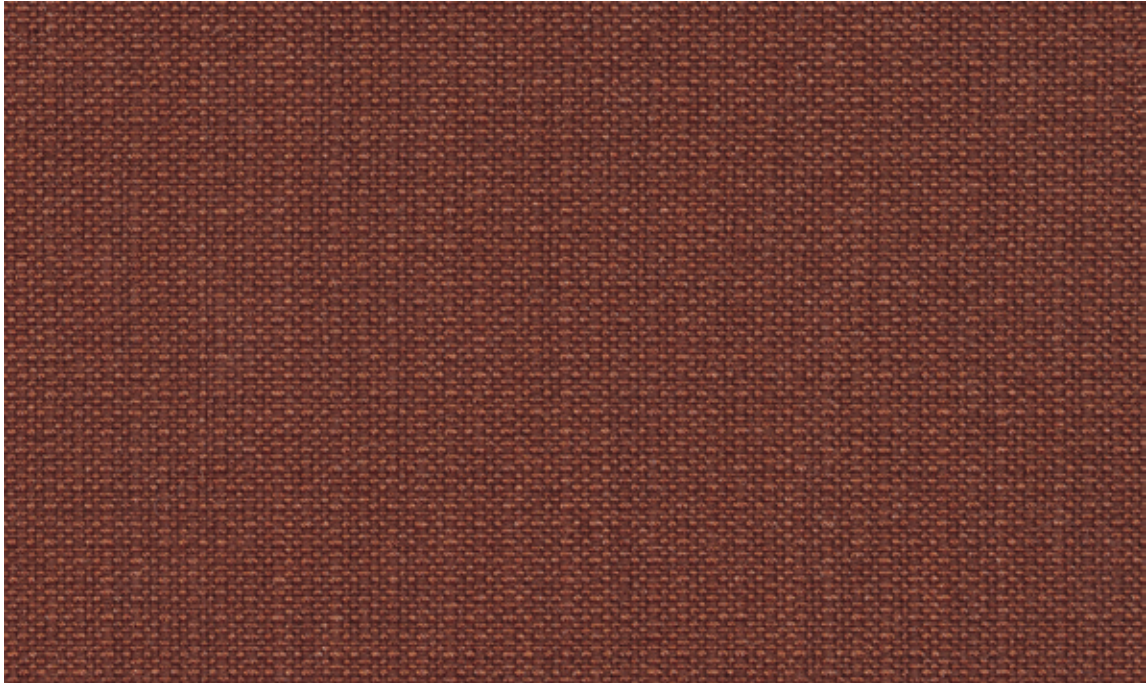
RIVESTIMENTO DISPONIBILE/ UPHOLSTERY AVAILABLE

- ITALIA
- NULITE
- LIGHT
- SMARTOFFICE
- SMARTLIGHT
- ONE
- IKIGAI
- OVERTIME
- SMARTBACK
- SWITCH
- NEAT
- POP
- POST
- CLOP
- SEA SHELL
- TIMELESS
- AMARCORD
- PONTE
- CUBE
- BLOOM
- FRAME
- EPOCA
- CLUSTER
- NESTAR
- AIRE JR

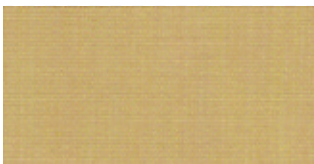
TESSUTO
CRISP

CATEGORIA K
CATEGORY K

Gabriel



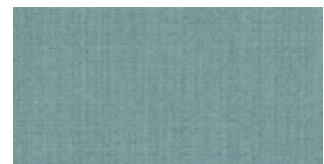
CR01



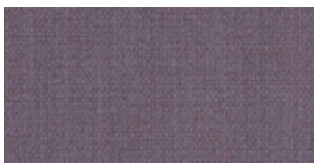
CR02



CR03



CR04



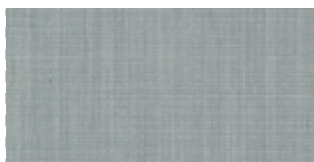
CR05



CR06



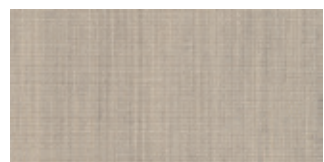
CR07



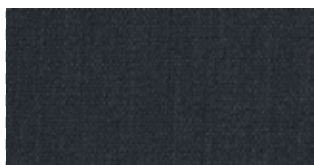
CR08



CR09



CR10



CR11

CRISP

IT

Composizione

93% Lana Nuova Zelanda, 7% Poliamide

Peso

460 g/lm — 14.84 oz/lin.yd

Altezza

140 cm — 55 inches

PERFORMANCE

Abrasion

200,000 — cicli martindale (EN ISO 12947-2)

200,000 — cicli martindale (ASTM D4966)

Pilling

4-5 — scale 1-5, max. 5 (EN ISO 12945-2)

Resistenza alla luce

5-7 — scale 1-8, max. 8 (EN ISO 105-B02)

Resistenza allo sfregamento

4-5/4-5 — scale 1-5, max. 5 (EN ISO 105x12)

INFIAMMABILITÀ

Certificazioni

BS 5852 Part 1 0,1

sigarette e fiammiferi

1988 BS 476 Parte 7 classe 2

BS EN 1021 1&2 sigarette e fiammiferi

Classe Uno UNI 9175 Class 1 IM

CA TB 117-2013

IMO MSC 307(88) Annex 1 part 8

MED Certificato IMO

IMO MSC 307(88) Annex 1 part 8 UK

MED Certificato IMO UK

ÖNORM A3800-B2-B3825-Q1 UK

US ACT

Pass

AATCC 8 or 116 bagnato/umido

AATCC 8 or 116 bagnato/umido

ASTM D4966 Cicli Martindale

ASTM D4966 Cicli Martindale

ASTM D4970 Pilling

ASTM D4970 Pilling

AATCC 16 Resistenza alla luce

AATCC 16 Resistenza alla luce

CA TB 117-2013

CA TB 117-2013

EN

Composition

93% New Zealand wool, 7% Polyamide

Weight

460 g/lm — 14.84 oz/lin.yd

Width

140 cm — 55 inches

PERFORMANCE

Abrasion

200,000 — rubs martindale (EN ISO 12947-2)

200,000 — rubs martindale (ASTM D4966)

(heavy duty upholstery)

Pilling

4-5 — scale 1-5, max. 5 (EN ISO 12945-2)

Light fastness

5-7 — scale 1-8, max. 8 (EN ISO 105-B02)

Rubbing fastness dry/wet

4-5/4-5 — scale 1-5, max. 5 (EN ISO 105x12)

FLAMMABILITY

Certificates

BS 5852 Part 1 0,1 Cigarette & Match,

The Furniture and Furnishing Regulations 1988

BS 476 Part 7 class 2

BS EN 1021 1&2 Cigarette and Match

Class Uno UNI 9175 Class 1 I EMME

CA TB 117-2013

IMO MSC 307(88) Annex 1 part 8

MED Certificate IMO

IMO MSC 307(88) Annex 1 part 8 UK

MED Certificate IMO UK

ÖNORM A3800-B2-B3825-Q1 UK

US ACT

Pass

AATCC 8 or 116 Dry/wet crocking

AATCC 8 or 116 Dry/wet crocking

ASTM D4966 Martindale (heavy duty)

ASTM D4966 Martindale (heavy duty)

ASTM D4970 Pilling

ASTM D4970 Pilling

AATCC 16 Light fastness

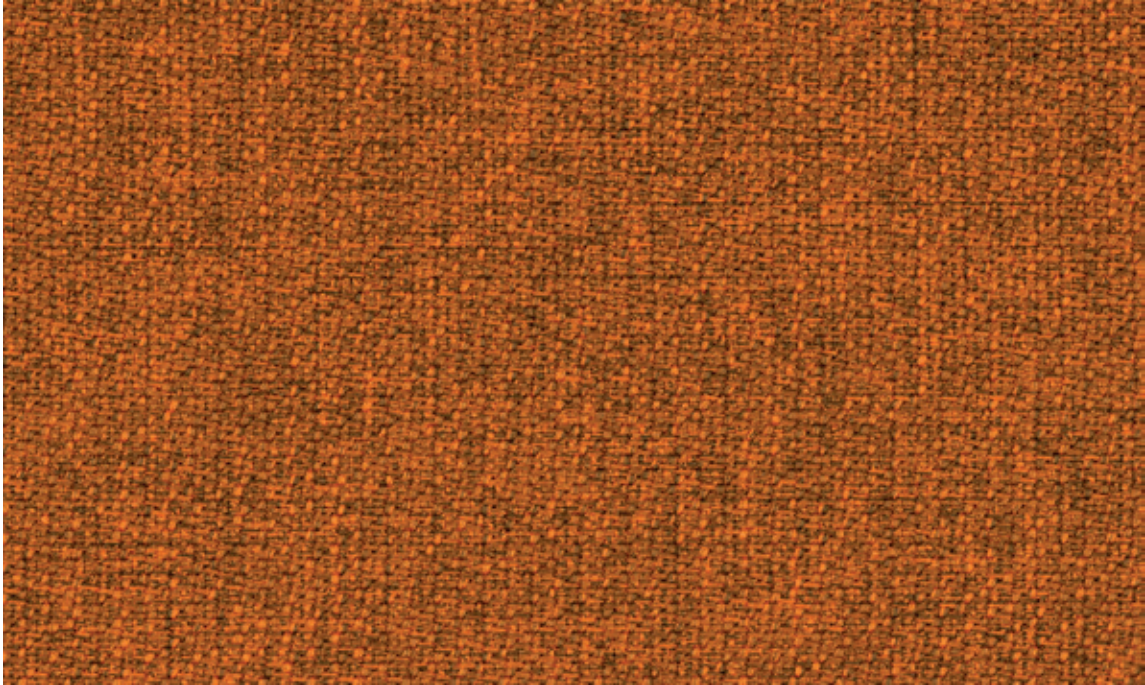
AATCC 16 Light fastness

CA TB 117-2013

CA TB 117-2013

RIVESTIMENTO DISPONIBILE/ UPHOLSTERY AVAILABLE

- ITALIA
- NULITE
- LIGHT
- SMARTOFFICE
- SMARTLIGHT
- ONE
- IKIGAI
- OVERTIME
- SMARTBACK
- SWITCH
- NEAT
- POP
- POST
- CLOP
- SEA SHELL
- TIMELESS
- AMARCORD
- PONTE
- CUBE
- BLOOM
- FRAME
- EPOCA
- CLUSTER
- NESTAR
- AIRE JR



SM15



SM01



SM02



SM04



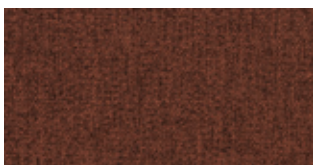
SM07



SM09



SM13



SM14



SM16



SM17



SM18



SM19

STEP MELANGE

IT

Composizione
100% Trevira CS

Peso
470 g/lm — 15.16 oz/lin.yd

Altezza
140 cm — 55 inches

PERFORMANCE

Abrasion
100,000 — cicli martindale (EN ISO 12947-2)
100,000 — cicli (ASTM D4157)

Pilling
4-5 — scale 1-5, max. 5 (EN ISO 12945-2)

Resistenza alla luce
5-7 — scale 1-8, max. 8 (EN ISO 105-B02)

Resistenza allo sfregamento
4-5/4-5 — scale 1-5, max. 5 (EN ISO 105x12)

INFIAMMABILITÀ

Certificati
DIN 4102 - B1
NF P 92-503/504/505 M1
BS EN 1021 1&2 Sigarette e fiammiferi
BS EN 1021-1 Sigarette
BS 5852 Crib 5
ÖNORM A3800-B1-B3825-Q1 UK
FAR/JAR 25.853 (a) (i) (ii)
AM 18 - NF D 60-013
CA TB 117-2013
Classe Uno UNI 9175 Classe 1 IM
DIN EN 13501-1 B-s1,d0
DIN EN 13501-1 B-s1,d0
IMO MSC 307(88) Annex 1 part 8
IMO MSC 307(88) Annex 1 part 8 UK
MED Certificato IMO
MED Certificato IMO UK
CAN/ ULC-S102.2
CAN/ULC-S109
NFPA 701

US ACT

Pass
ASTM D4157-07 abrasione 100k
ASTM D3511 Pilling
CA TB 117-2013
NFPA 701
AATCC 16 Resistenza alla luce
AATCC 8 or 116 bagnato/umido

RIVESTIMENTO DISPONIBILE/ UPHOLSTERY AVAILABLE

- ITALIA
- NULITE
- LIGHT
- SMARTOFFICE
- SMARTLIGHT
- ONE
- IKIGAI
- OVERTIME
- SMARTBACK
- SWITCH
- NEAT
- POP
- POST
- CLOP
- SEA SHELL
- TIMELESS
- AMARCORD
- PONTE
- CUBE
- BLOOM
- FRAME
- EPOCA
- CLUSTER
- NESTAR
- AIRE JR

EN

Composition
100% Trevira CS

Weight
470 g/lm — 15.16 oz/lin.yd

Width
140 cm — 55 inches

PERFORMANCE

Abrasion
100,000 — rubs martindale (EN ISO 12947-2)
100,000 — double rubs wyzenbeek (ASTM D4157)
(heavy duty upholstery)

Pilling
4-5 — scale 1-5, max. 5 (EN ISO 12945-2)

Light fastness
5-7 — scale 1-8, max. 8 (EN ISO 105-B02)

Rubbing fastness dry/wet
4-5/4-5 — scale 1-5, max. 5 (EN ISO 105x12)

FLAMMABILITY

Certificates
DIN 4102 - B1
NF P 92-503/504/505 M1
BS EN 1021 1&2 Cigarette and Match
BS EN 1021-1 Cigarette
BS 5852 Crib 5
ÖNORM A3800-B1-B3825-Q1 UK
FAR/JAR 25.853 (a) (i) (ii)
AM 18 - NF D 60-013-(only for fabric)
CA TB 117-2013
Class Uno UNI 9175 Class 1 I EMME
DIN EN 13501-1 B-s1,d0
DIN EN 13501-1 B-s1,d0
IMO MSC 307(88) Annex 1 part 8
IMO MSC 307(88) Annex 1 part 8 UK
MED Certificate IMO
MED Certificate IMO UK
CAN/ ULC-S102.2
CAN/ULC-S109
NFPA 701

US ACT

Pass
ASTM D4157-07 Wyz abrasion (heavy duty) 100k
ASTM D3511 Pilling
CA TB 117-2013
NFPA 701
AATCC 16 Light fastness
AATCC 8 or 116 Dry/wet crocking

TESSUTO
INCA RIO

CATEGORIA C
CATEGORY C

novartiplast italia
High Performance Quality Leader



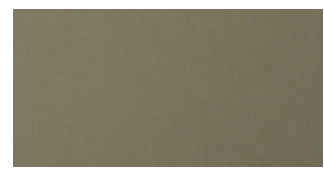
IC02



IC04



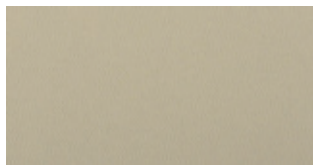
IC06



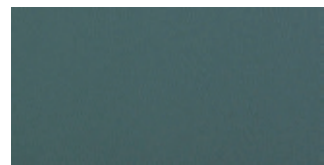
IC08



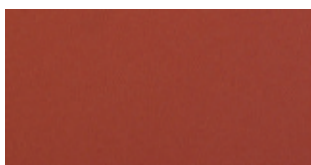
IC10



IC12



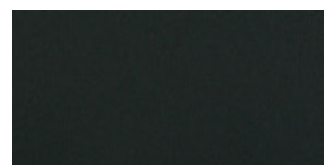
IC14



IC16



IC18



IC20

INCA RIO

IT

Aspetto

pelle liscia

Composizione

88% VINYL / 1% PU / 7% PES / 4% CO

Peso

670 gr/m2

Altezza

140 cm

Resistenza all'acetone

UNI 4818 - P.16

Resistenza salinità (acqua marina)

UNI EN ISO 105-E02:2013

Resistenza alla candeggina

UNI EN ISO 105-X12:2003 Using 3% Sodium Hypochlorite

Resistenza all'acqua

UNI EN ISO 105-X12:2003 Using alcohol

RESISTENZA AL FUOCO

EU: UNI EN ISO 1021 PART 1 & PART 2

IT: CLASSE 1IM - UNI 9175

UK: BS5892 SOURCE 0 & 1

US: CAL TB 117

EN

Aspect

Smooth leather look

Composition

88% VINYL / 1% PU / 7% PES / 4% CO

Weight

670 gr/m2

Width

140 cm

Acetone resistant

UNI 4818 - P.16

Salinity resistant (sea water)

UNI EN ISO 105-E02:2013

Bleach resistant

UNI EN ISO 105-X12:2003 Using 3% Sodium Hypochlorite

Alcohol resistant

UNI EN ISO 105-X12:2003 Using alcohol

FIRE RESISTANCE

EU: UNI EN ISO 1021 PART 1 & PART 2

IT: CLASSE 1IM - UNI 9175

UK: BS5892 SOURCE 0 & 1

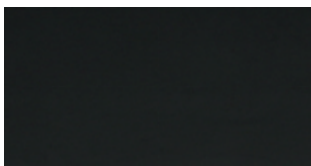
US: CAL TB 117

RIVESTIMENTO DISPONIBILE/ UPHOLSTERY AVAILABLE

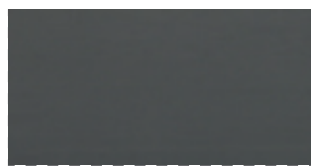
- ITALIA
- NULITE
- LIGHT
- SMARTOFFICE
- SMARTLIGHT
- ONE
- CLOP
- SEA SHELL
- TIMELESS
- AMARCORD
- PONTE
- CUBE
- BLOOM
- FRAME
- EPOCA
- CLUSTER
- NESTAR
- AIRE JR
- ESSENZIALE



603



649



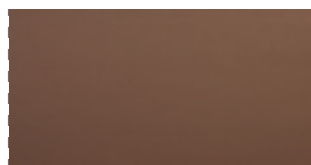
604



605



606



610



619



621



633



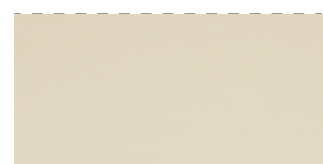
609



611



601



602

SECRET

IT

Composizione

76% PVC - 22% PES - 2% PU

Peso

540 +/- 10 g/m2

Altezza

140 cm

RESISTENZA AL FUOCO

UNI 9175 classe 1IM

EN 1021-1

EN 1021-2

BS 5852-1 cigarette test

BS 5852-1 match test

TB 117:2013

EN

Composition

76% PVC - 22% PES - 2% PU

Weight

540 +/- 10 g/m2

Width

140 cm

FIRE RESISTANCE

UNI 9175 classe 1IM

EN 1021-1

EN 1021-2

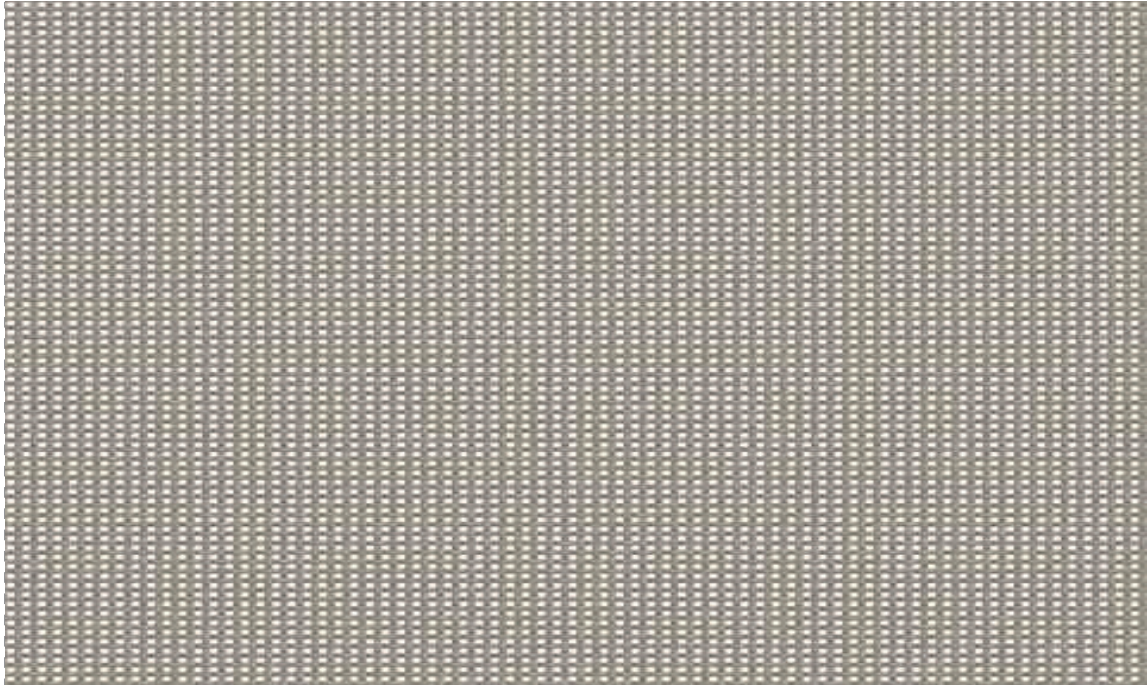
BS 5852-1 cigarette test

BS 5852-1 match test

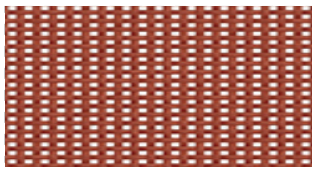
TB 117:2013

RIVESTIMENTO DISPONIBILE/ UPHOLSTERY AVAILABLE

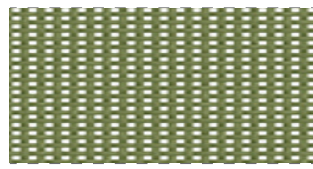
- ITALIA
- NULITE
- LIGHT
- SMARTOFFICE
- SMARTLIGHT
- ONE
- CLOP
- SEA SHELL
- TIMELESS
- AMARCORD
- PONTE
- CUBE
- BLOOM
- FRAME
- EPOCA
- CLUSTER
- NESTAR
- AIRE JR
- ESSENZIALE



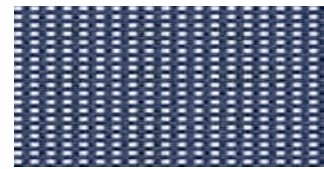
803



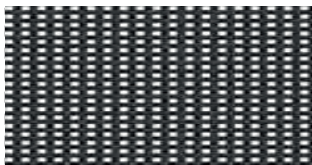
802



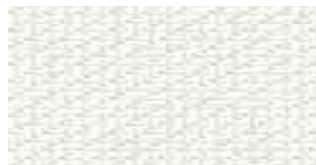
804



805



651



801

BATYLINE ISO

IT

Proprietà fisiche

resistenza tessile (ordito/reni)
240/240
daN/5 cm
EN ISO 1421

Resistenza alla lacerazione (ordito/reni)
DIN 53.363

Peso

500 g/m²
14.7 oz/sq. yd
EN ISO 2286-2

Altezza

180 cm • 70.9 in

Resistenza all'abrasione

>120,000 cycles
EN ISO 12947-2 Martindale

>600,000 double rubs
ASTM D4157 Wyzenbeek

Certificazioni etichette, garanzia

Riciclabile / certificazione Greenguard
certificazione FDES
Classificazione Base - Eco Bau
Tecnologia Smart Yarn
garanzia 5 anni

RESISTENZA AL FUOCO

NFP 92-507
DIN 4102-1
IMO
MSC.307(88)
(2010FTP CODE)
ANNEX 1 PART 8
CAL TB 117
BS5852
SOURCE 2

EN

Physical properties

Tensile strength (warp/weft)
240/240
daN/5 cm
EN ISO 1421

Tear strength (warp/weft)
DIN 53.363

Weight

500 g/m²
14.7 oz/sq. yd
EN ISO 2286-2

Width

180 cm • 70.9 in

Abrasion resistance

>120,000 cycles
EN ISO 12947-2 Martindale

>600,000 double rubs
ASTM D4157 Wyzenbeek

Certifications, labels, warranty

Recyclable / Greenguard certification
FDES Certification
Base Classification - Eco Bau
Smart Yarn Technology
5 years warranty

FIRE RESISTANCE

NFP 92-507
DIN 4102-1
IMO
MSC.307(88)
(2010FTP CODE)
ANNEX 1 PART 8
CAL TB 117
BS5852
SOURCE 2

RIVESTIMENTO DISPONIBILE/ UPHOLSTERY AVAILABLE

- OVERTIME
- POP
- NULITE
- LIGHT