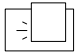




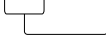


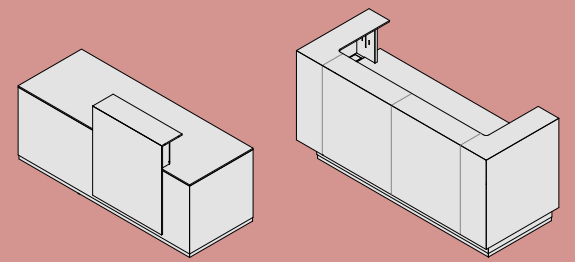


/ RE.AC

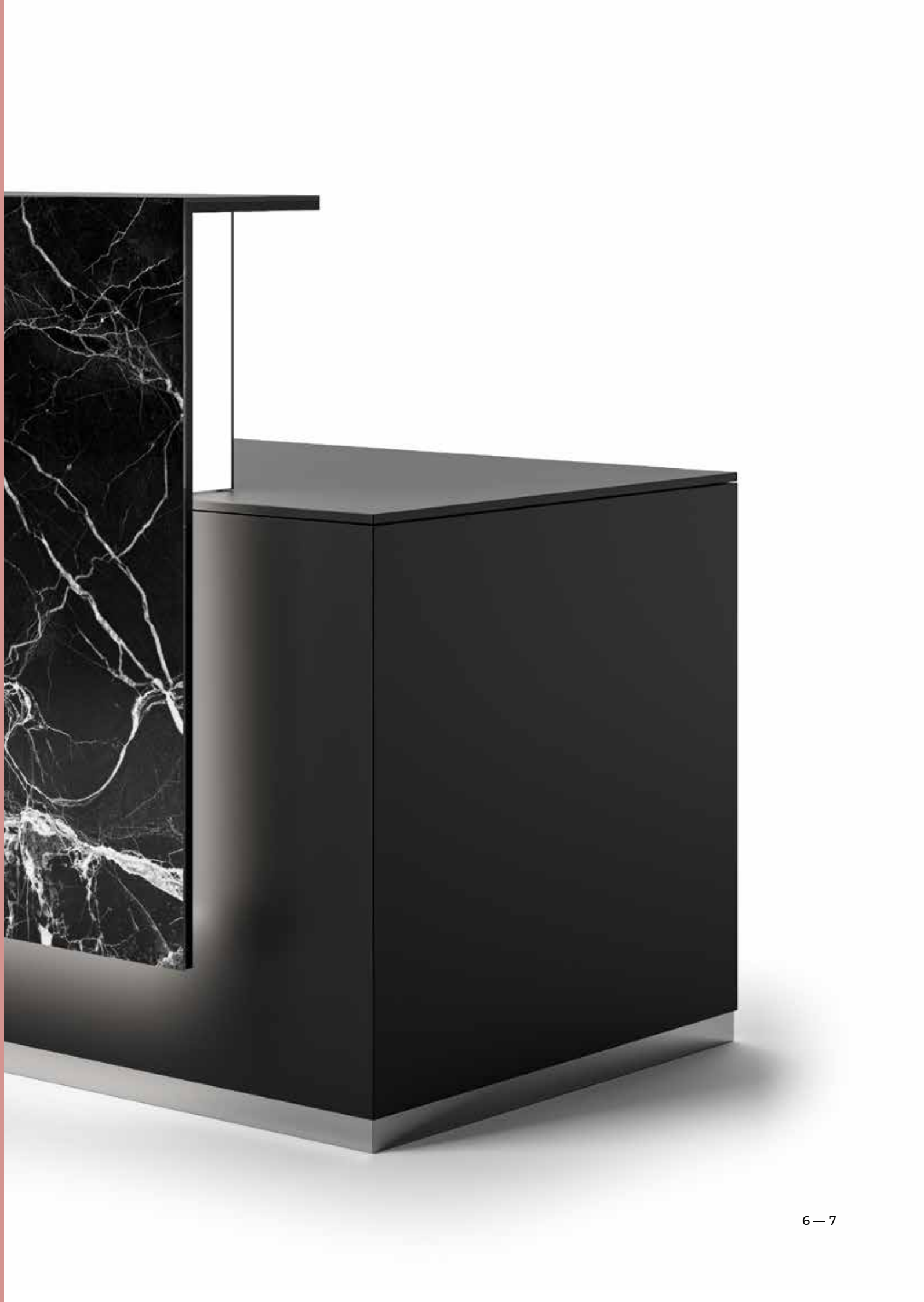


	LUX	5
	OUTLINE	19
	FARM	35
	DOMOMAG	47
	KUBICK	59
	B-SOUND	75
	COMPLEMENTI complements compléments Ergänzungen complementos	85
	ACCESSORI accessories accessories Zubehör accessorios	105
	finiture e colori finishing and colors finitions et couleurs Oberfläche und farben acabados y colores	127



LUX

design:
Gianantonio Perin
Monica Fernandes



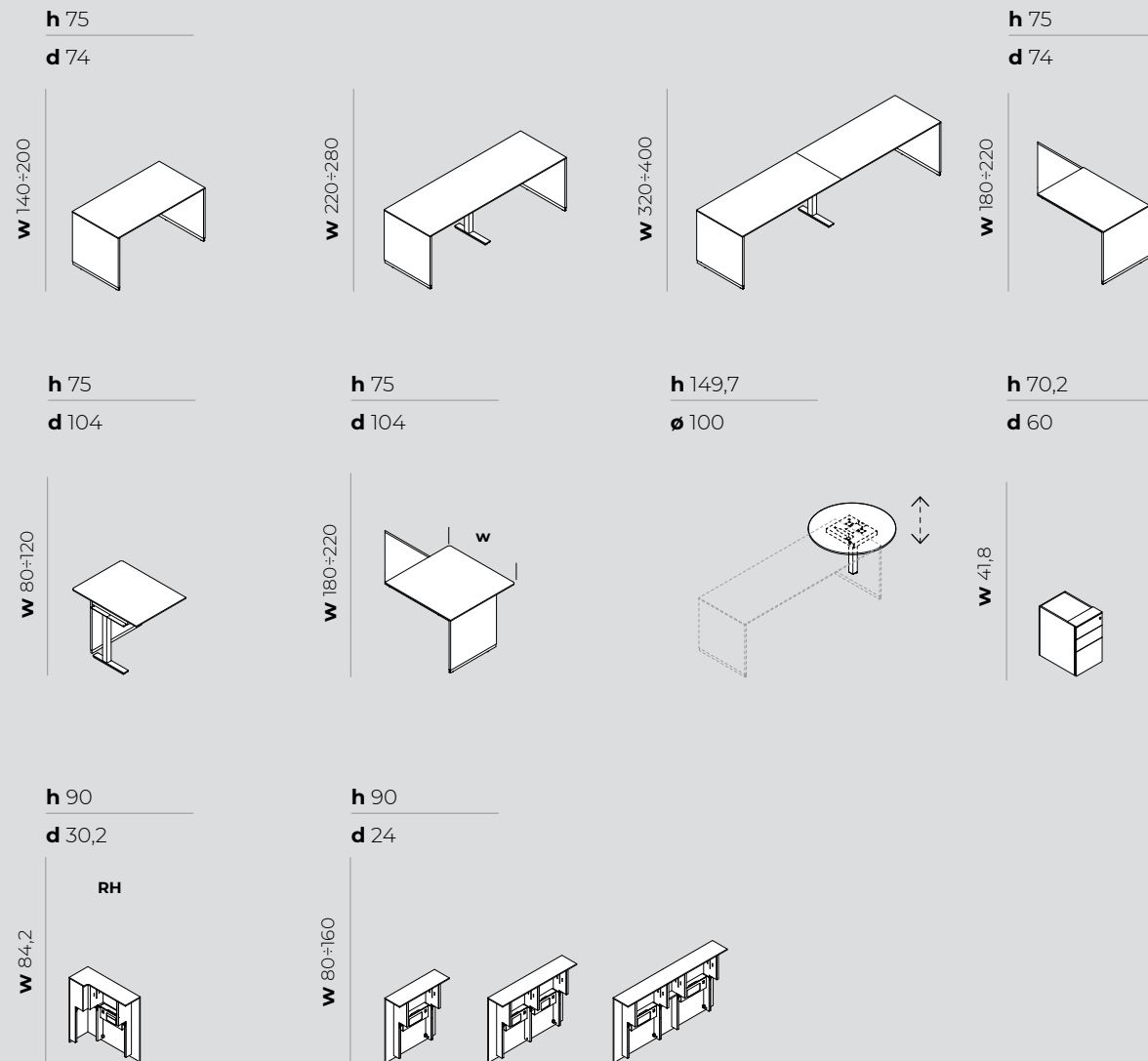












measure in cm • measurements in cm • mesures en cm • Maße in cm • medidas en cm



bancone
counter
comptoir
Stheke
contador

melaminico, melamine, mélamine,
melamin, melamina



vaschetta passacavi
top access
chemin de câbles
Kabelwanne
bandeja de cables



mensola
shelf
étagère
Regal
repisa

luci led
LED lights
lumières LED
LED-unterbauleuchten
lucos led

zoccolo
skirting
socle
Sockel
zócalo

gamba intermedia
mid leg
ped intermédiaire
Zwischenbein
pata intermedia

metallo, metal, métal,
metal, metal

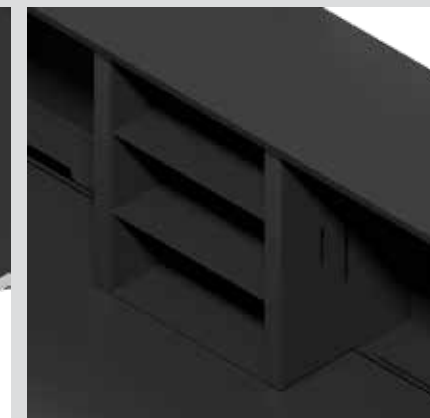


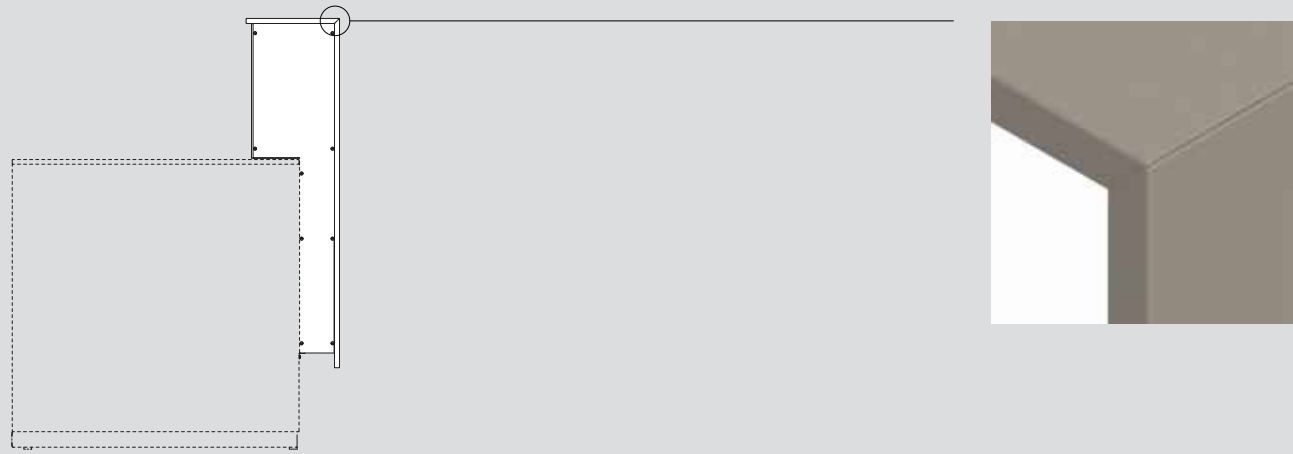
highlights

cassettiera portante
desk height pedestal
caissons portant
Standcontainer
cajón de sustentación



cassetino portafogli
paper tray
 tiroir porte documents
Brieftaschenschublade
cajón pequeño para hojas





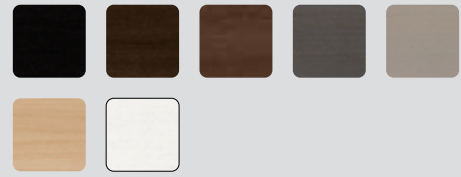
melaminico

melamine
mélamine
melamin
melamina

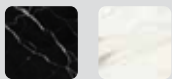


legno

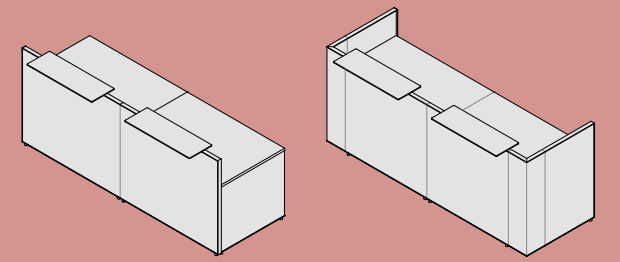
veneer
bois
holz
madera



vetro stampato
printed glass
verre imprimé
Bedrucktes Glas
vidrio impreso



melaminico
melamine
mélamine
melamin
melamina

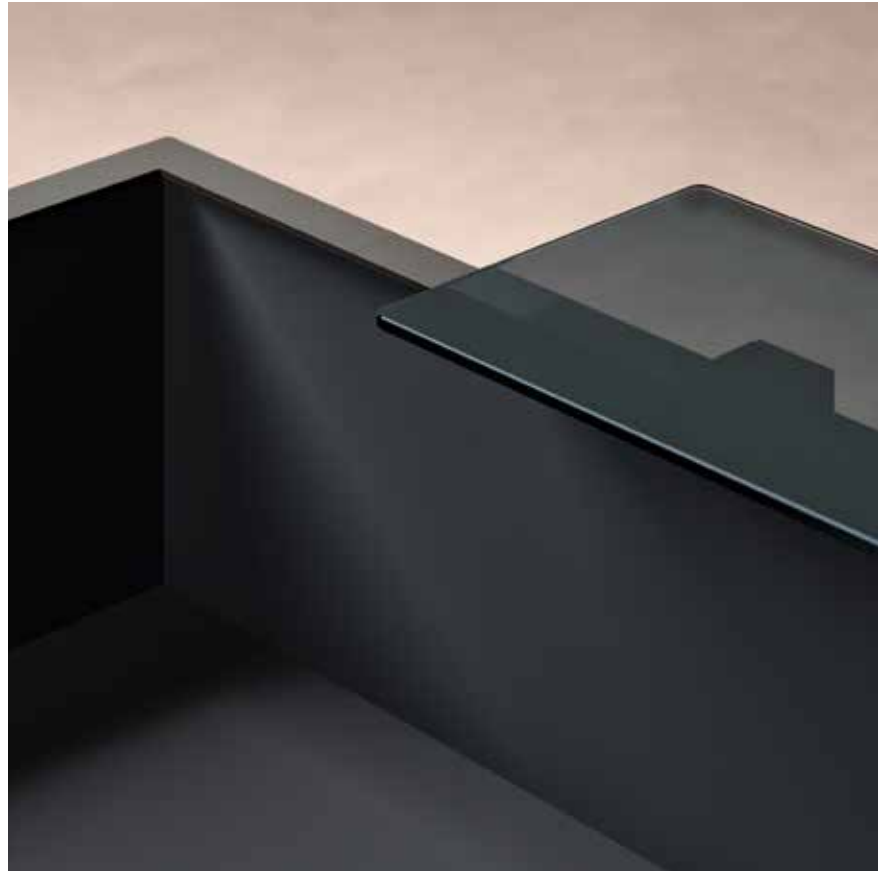


OUTLINE

design:
Gianantonio Perin
Monica Fernandes

















<p>h 102,3 d 82,7</p> <p>w 81÷181</p>	<p>h 102,3 d 83,2</p> <p>w 201÷361</p>	<p>h 102,3 d 83,2</p> <p>w 125,4÷205,4</p>	<p>h 102,3 d 83,2</p> <p>w 205,4÷405,4</p>
<p>h 102,3 d 82,7</p> <p>w 122,7÷202,7</p>	<p>h 102,3 d 62,7-82,7</p> <p>w 163,2÷203,2</p>	<p>h 102,3 d 62,7-82,7</p> <p>w 140,5÷180,5</p>	<p>h 102,3 d 60,5</p> <p>w 4,1</p>
<p>h 102,3 d 82,7</p> <p>w 80,5÷180,5</p>	<p>h 102,3 d 112,5-132,5</p> <p>w 80÷120</p>	<p>h 71,8 d 17</p> <p>w 80,5÷120,5</p>	<p>h 71,8 d 17</p> <p>w 64,6</p>
<p>h 0,3 d 28</p> <p>w 80-120</p> <p>metallo metal métal metal metal</p>	<p>h 0,8 d 28</p> <p>w 80-120</p> <p>vetro glass verre Glas vidrio</p>	<p>h 1,8 d 28</p> <p>w 80-120</p> <p>melaminico melamine mélamine melamin melamina</p>	

measure in cm • measurements in cm • mesures en cm • Maße in cm • medidas en cm

profilo
profile
profil
Profil
perfil

gamba intermedia
middle leg
piéd intermédiaire
mittleres Bei
pata intermedia

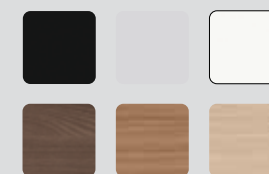
metallo, metal, métal
metal, metal

mensola
shelf
étagère
Regal
repisa

piedino
foot
piéd
Fuß
pie

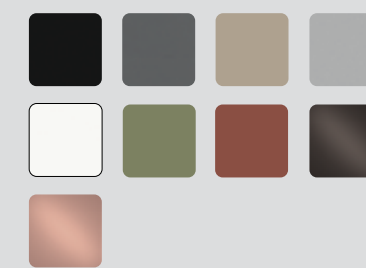
piano e gamba
worktop and leg
plateau et piètement
Tischplatte und Wange
tapa y pata

melaminico, melamine, mélamine,
melamin, melamina



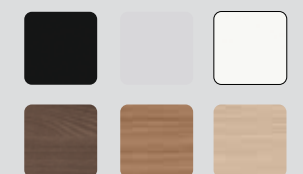
profili e piedini
profiles and feet
profils et pieds
Rahmen und Füße
perfiles y pies

metallo, metal, métal, metal, metal



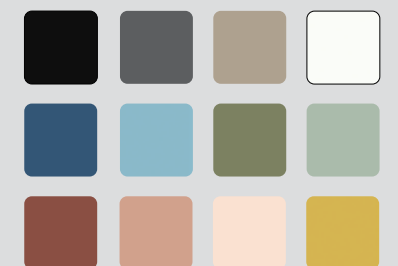
frontali
fronts
façade
Fronten
Frontal

melaminico, melamine, mélamine,
melamin, melamina

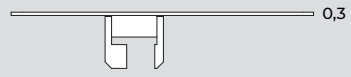


frontali (solo esterno)
fronts (external only)
façade (externe uniquement)
Fronten (Nur extern)
Frontal (solo externo)

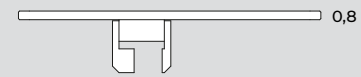
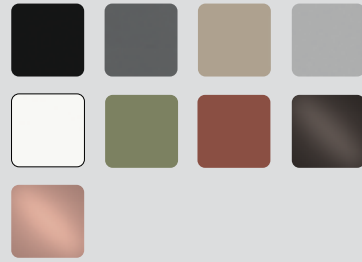
laccato opaco, lacquered matt, lacqué mat,
matt lackiert, lacado mate



mensola • shelf • étagère • Regal • repisa



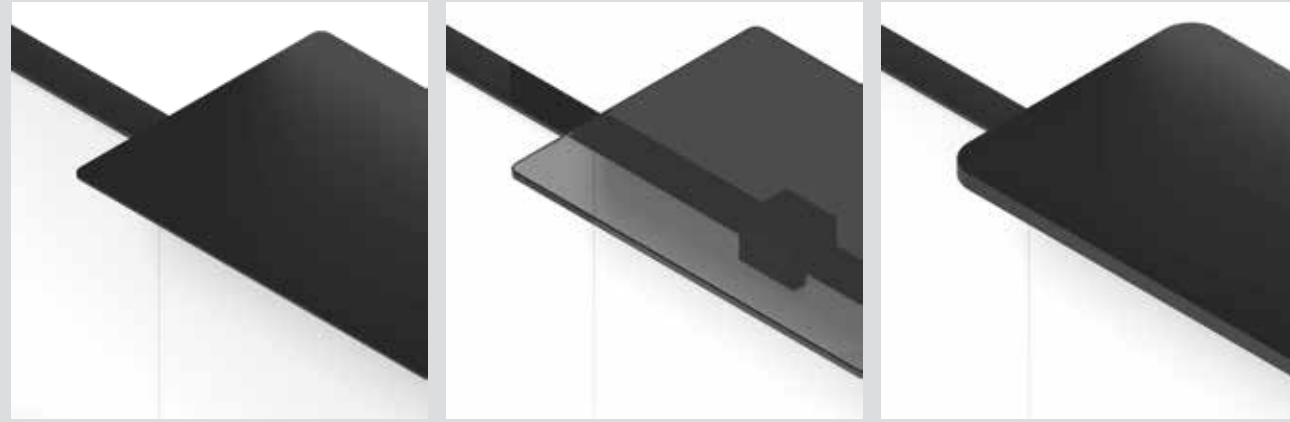
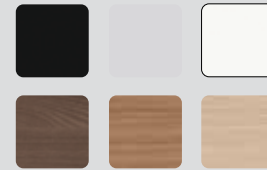
metallo epox
metal epoxy
epoxy métal
epoxy metal
epoxidico metal



vetro fumé
transparent smoke grey glass
verre fumé
rauchglas
vidrio ahumado



melaminico
melamine
mélamine
melamin
melamina



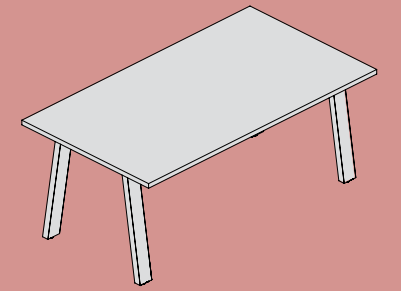
highlights

profilo

profile
profil
Profil
perfil

piedino

foot
pied
Fuß
pie



FARM

design:
Gianantonio Perin

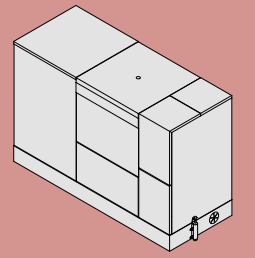
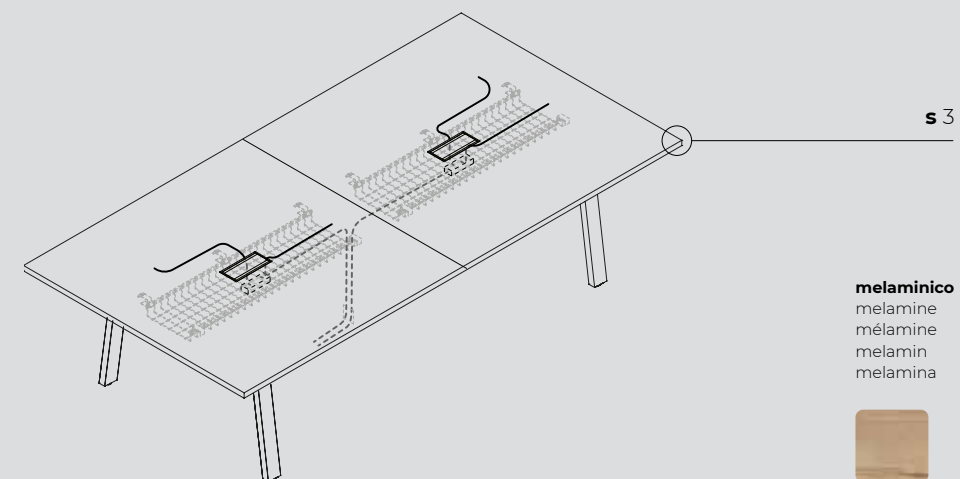
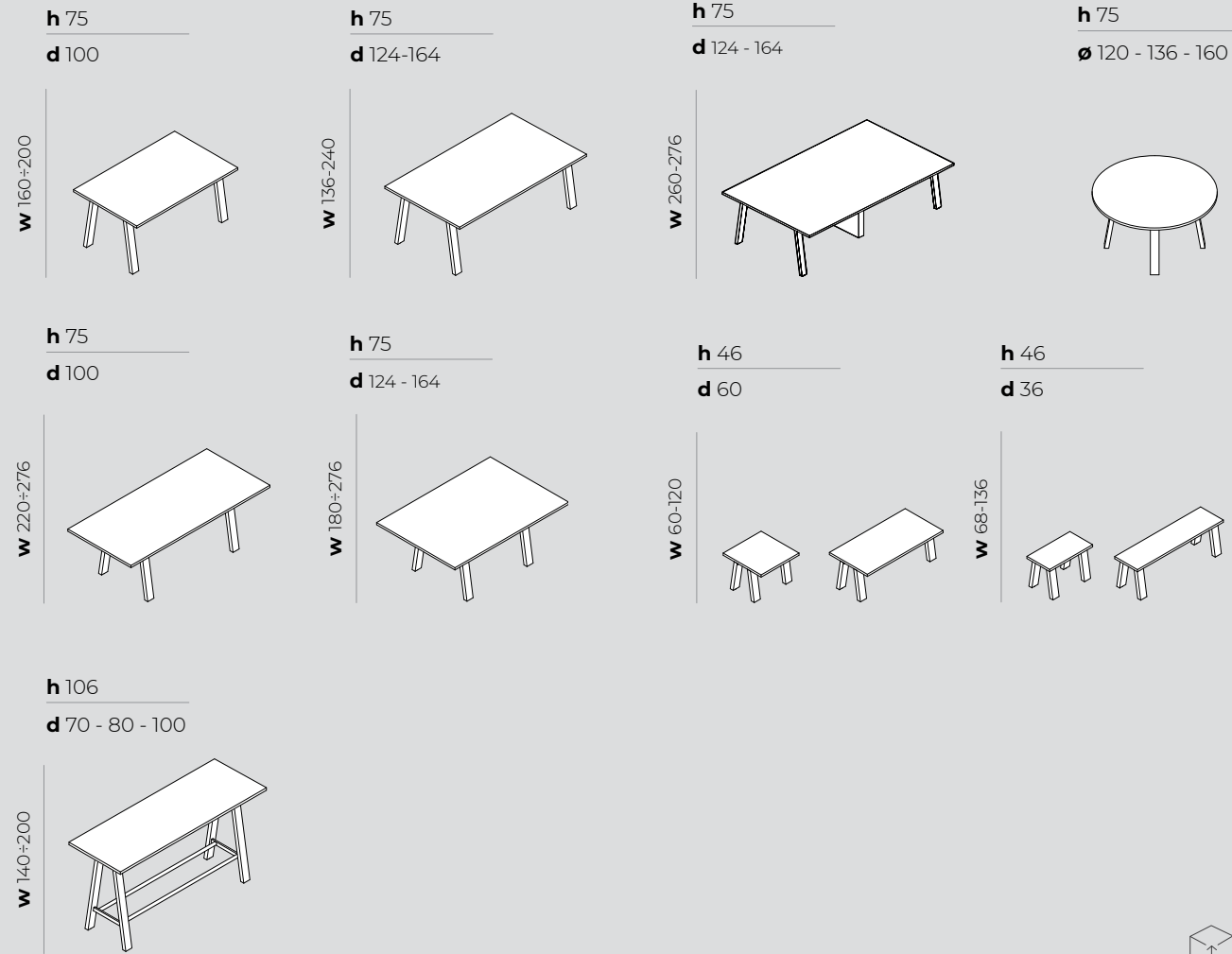










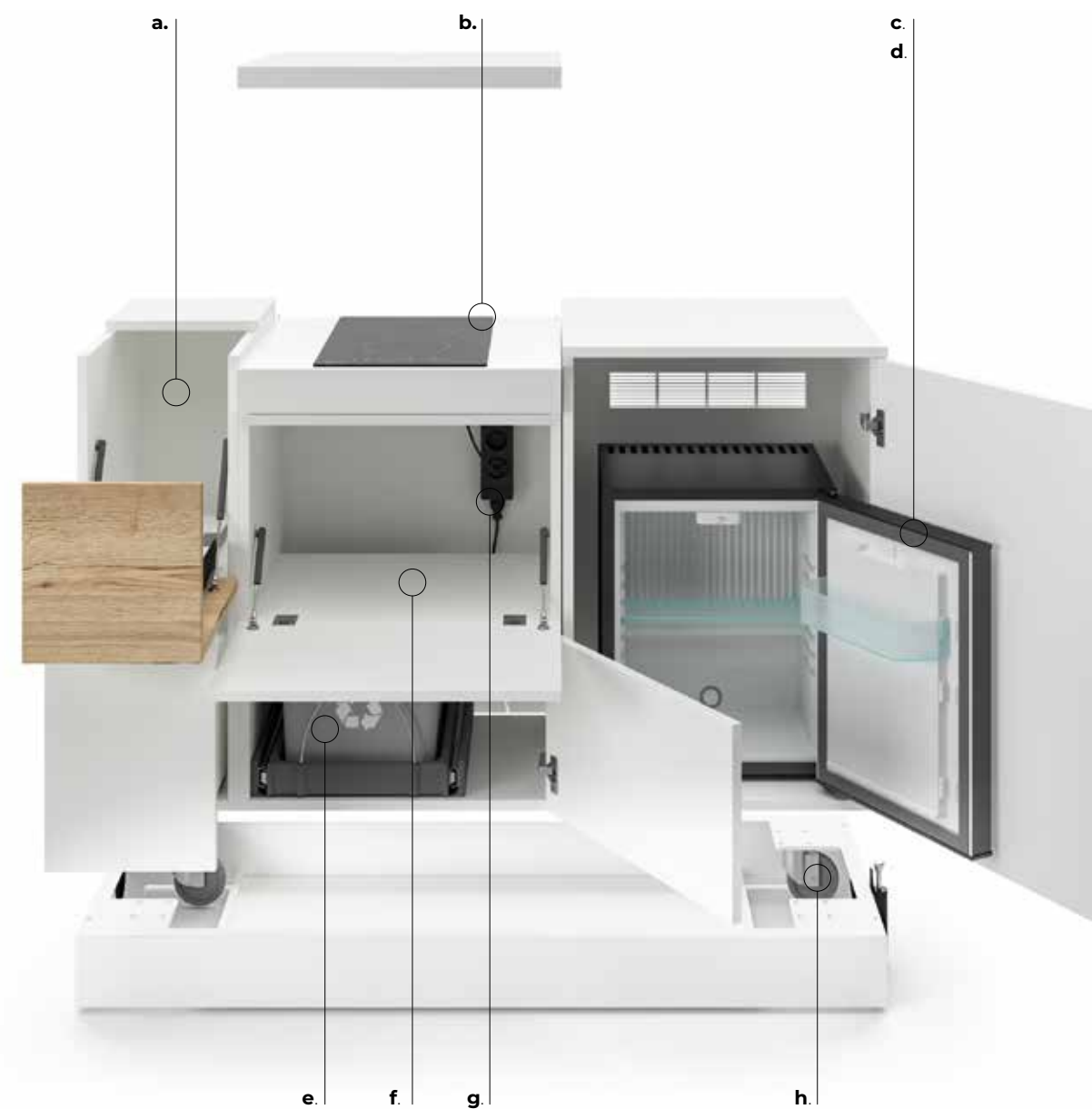
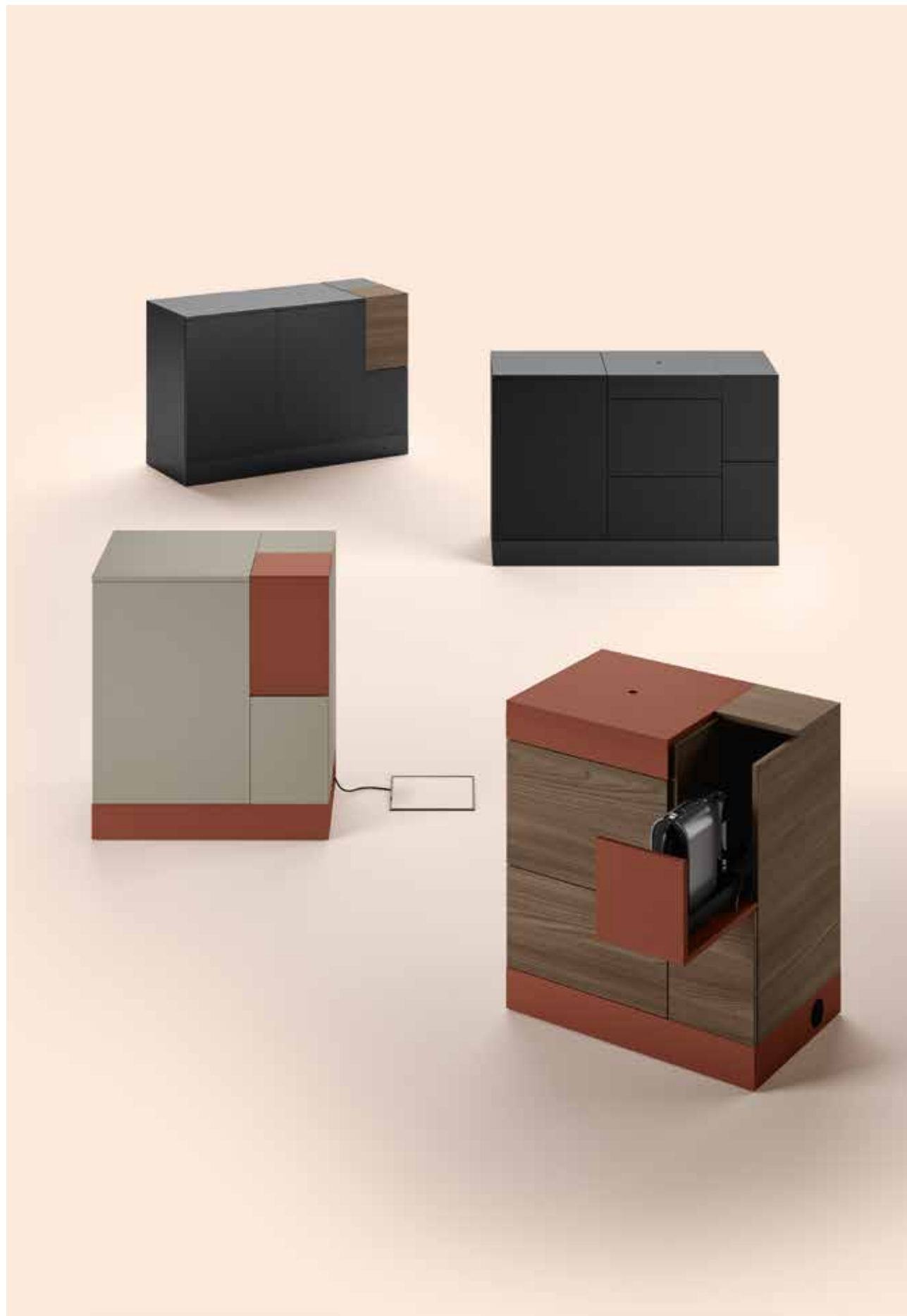


DOMOMAG

design:
Francesco Fait







a. vano macchinetta caffè
 coffee machine compartment
 module machine à café
 Kaffeemaschine Schrank
 compartimento cafetera

b. vano piano cottura
 hob compartment
 module de cuisson
 Kochfeld-modul
 compartimento de la placa

c. vano frigorifero
 fridge compartment
 module réfrigérateur
 Kühlschrank Schrank
 compartimento frigorífico

d. vano dispensa
 pantry compartment
 module garde-manger
 Speisekammer Schrank
 compartimento despensa

e. vano porta rifiuti
 waste compartment
 module à déchets
 Abfallschrank
 compartimento de residuos

f. vano microonde
 microwave compartment
 module micro-ondes
 Mikrowelle Schrank
 compartimento microondas

g. elettrificabile
 Cable management opt
 module électrifié
 komplett elektrifiziert
 electrificabile

h. ruote
 castors
 roulettes
 Laufrollen
 ruedas

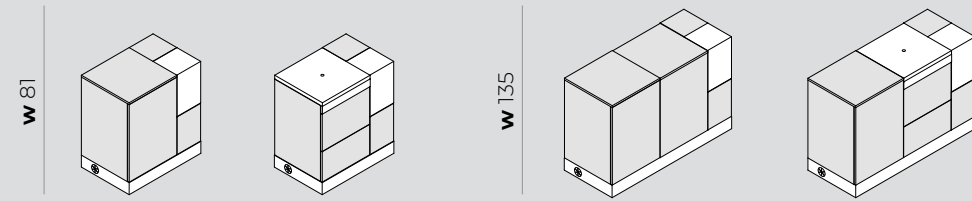




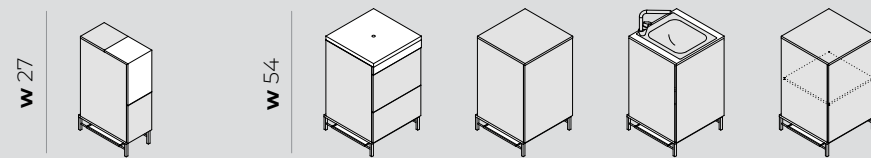
- a. anta vano caffè**
coffee machine
compartment door
porte du module à café
Kaffeemaschine Schrank-Tuer
- b. vano piano cottura**
hob compartment
module de cuisson
Kochfeld-modul
compartimento de la placa
- c. lavandino**
Kitchen sink
module de lavage
Waschbecken
fregadero
- d. vano dispensa**
pantry compartment
module garde-manger
Speisekammer Schrank
compartimento despensa
- e. vano porta rifiuti**
waste compartment
module à déchets
Abfallschrank
compartimento de residuos
- f. vano microonde**
microwave compartment
module micro-ondes
Mikrowelle Schrank
compartimento microondas
- g. vano frigorifero**
fridge compartment
module réfrigérateur
Kühlschrank Schrank
compartimento frigorífico



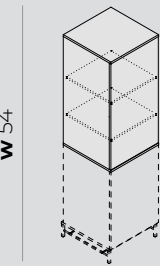
h 92
d 54



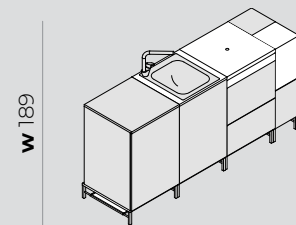
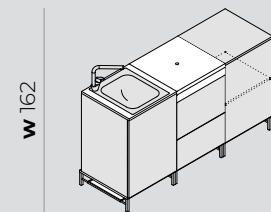
h 92
d 54



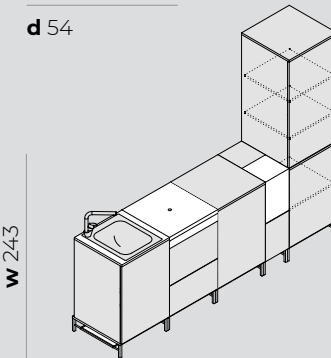
h 106
d 54



h 92
d 54



h 198
d 54



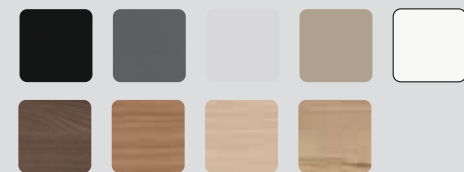
moduli
modules
modules
module
modulos

anta vano caffè
coffee machine
compartment door
porte du module à café
Kaffeemaschine Schrank-Tuer

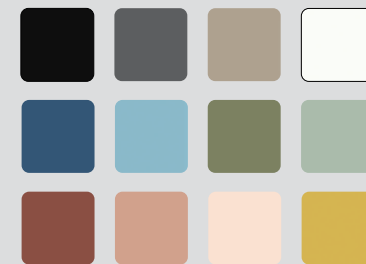
anta vano caffè
coffee machine
compartment door
porte du module à café
Kaffeemaschine Schrank-Tuer

struttura
structure
structure
Korpus
estructura

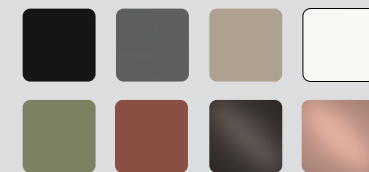
melaminico, melamine, mélamine, melamin, melamina



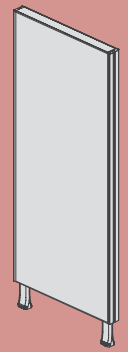
laccato opaco, lacquered matt, lacqué mat, matt lackiert, lacado mate



metallo, metal, métal, metal, metal



misure in cm • measurements in cm • mesures en cm • Maße in cm • medidas en cm



KUBICK

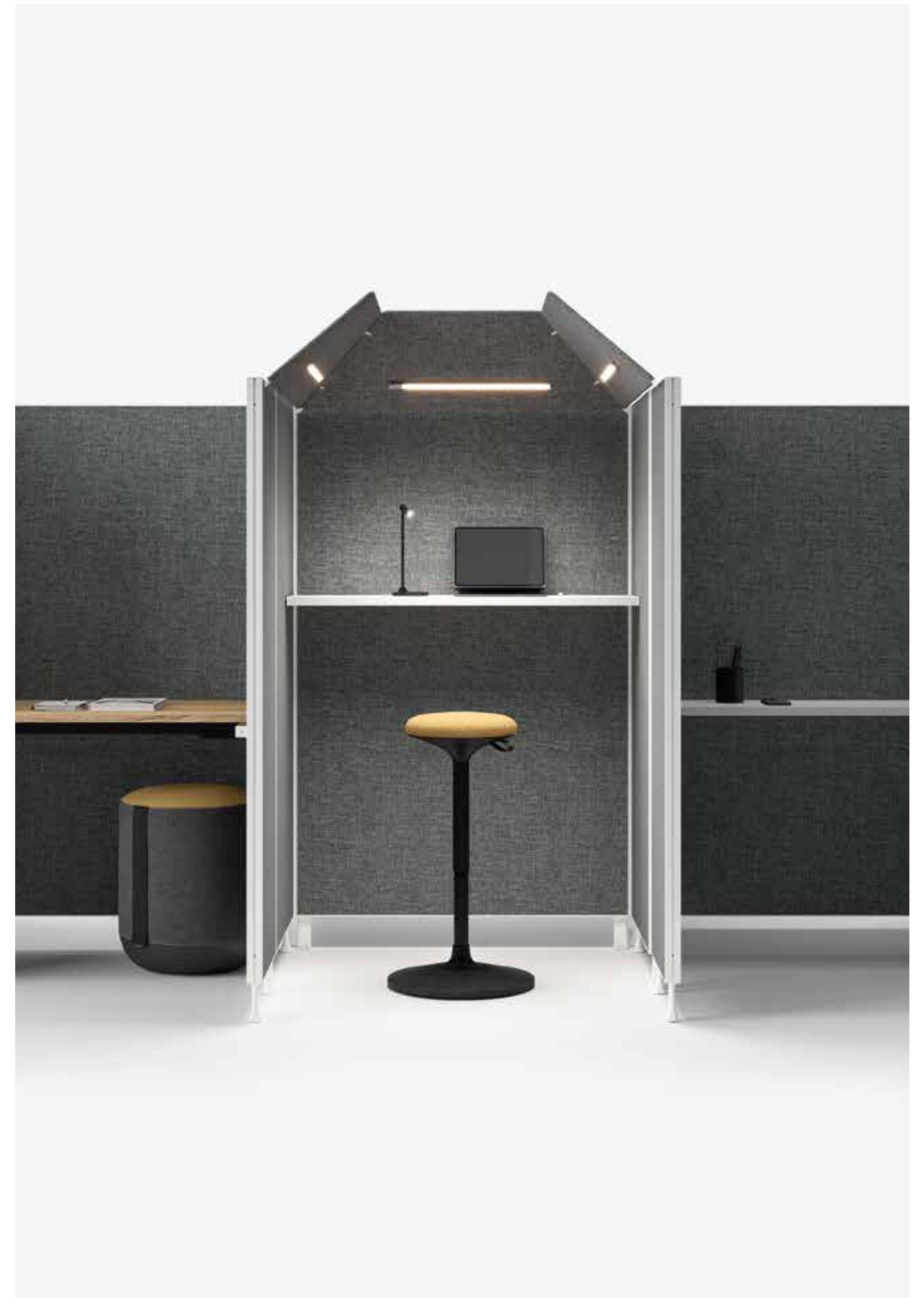
design:
R&D Bralco



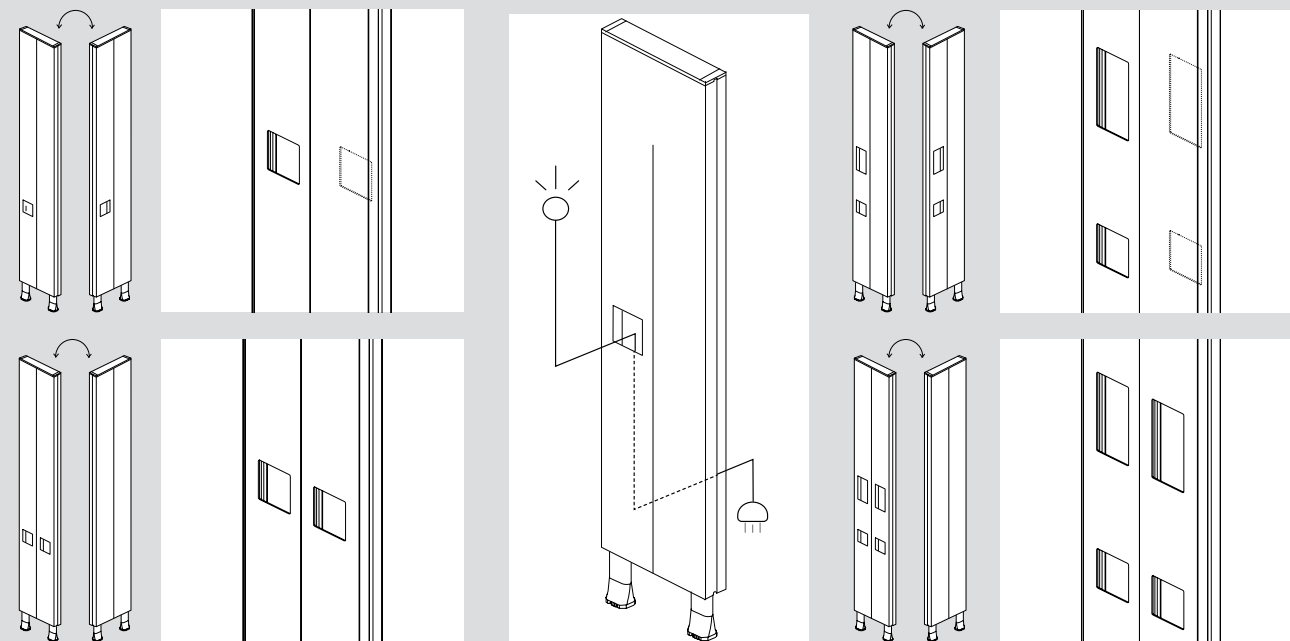
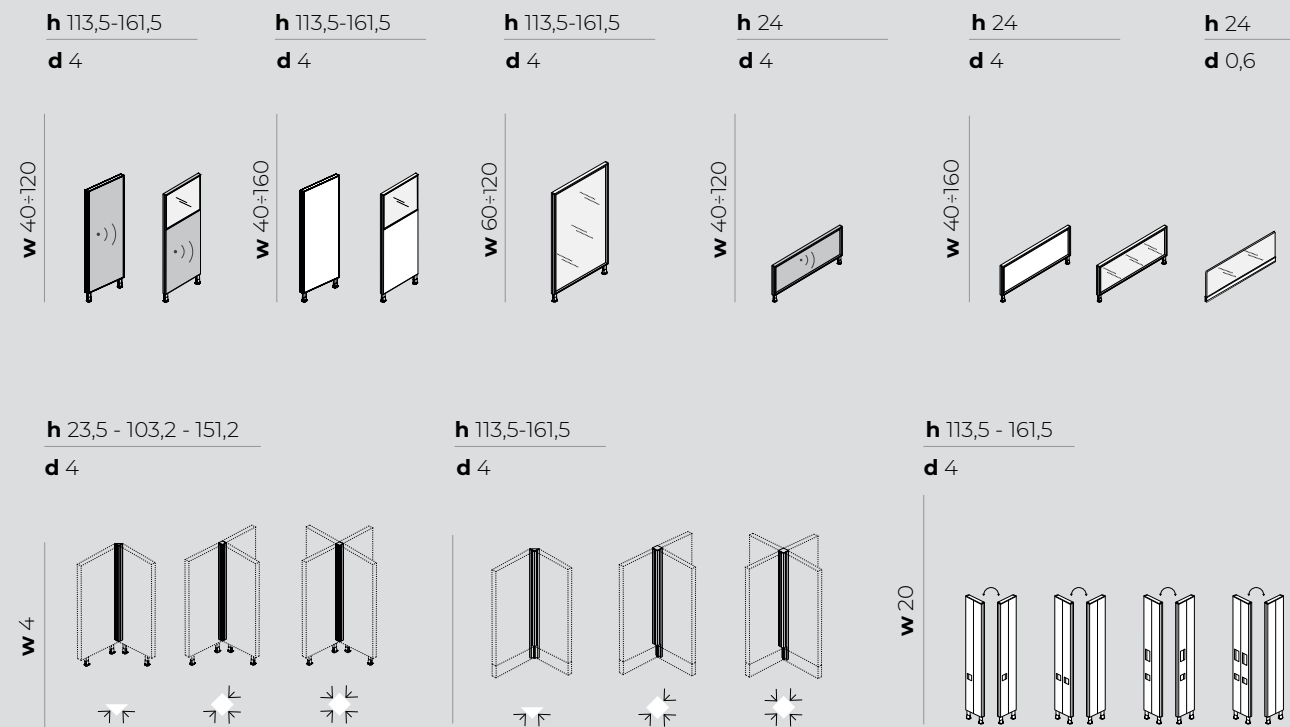




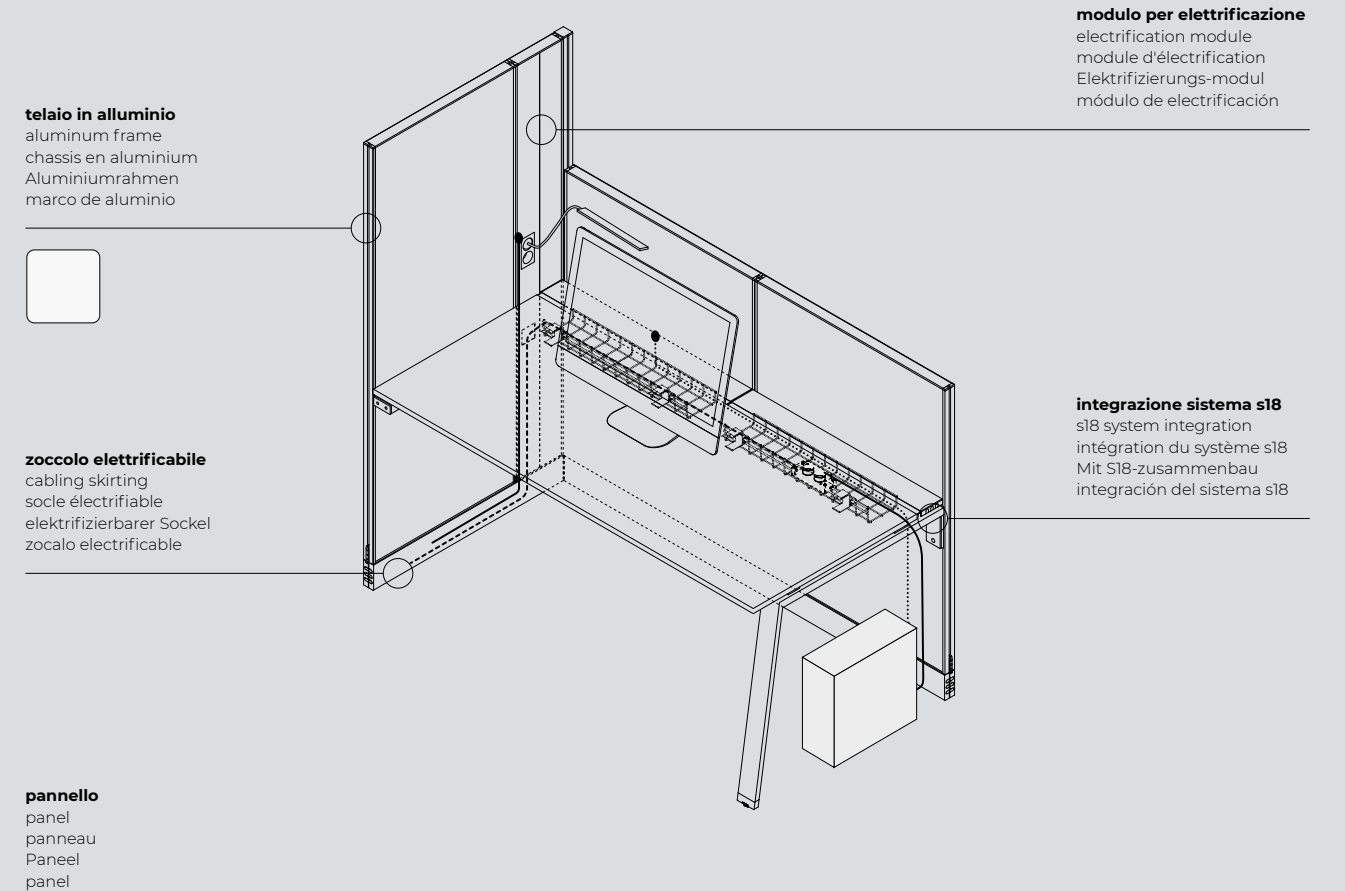








measure in cm • measurements in cm • mesures en cm • Maße in cm • medidas en cm



melaminico, melamine, mélamine, melamin, melamina

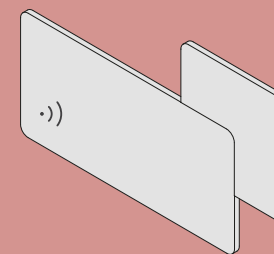


vetro, glass, verre, Glas, vidrio



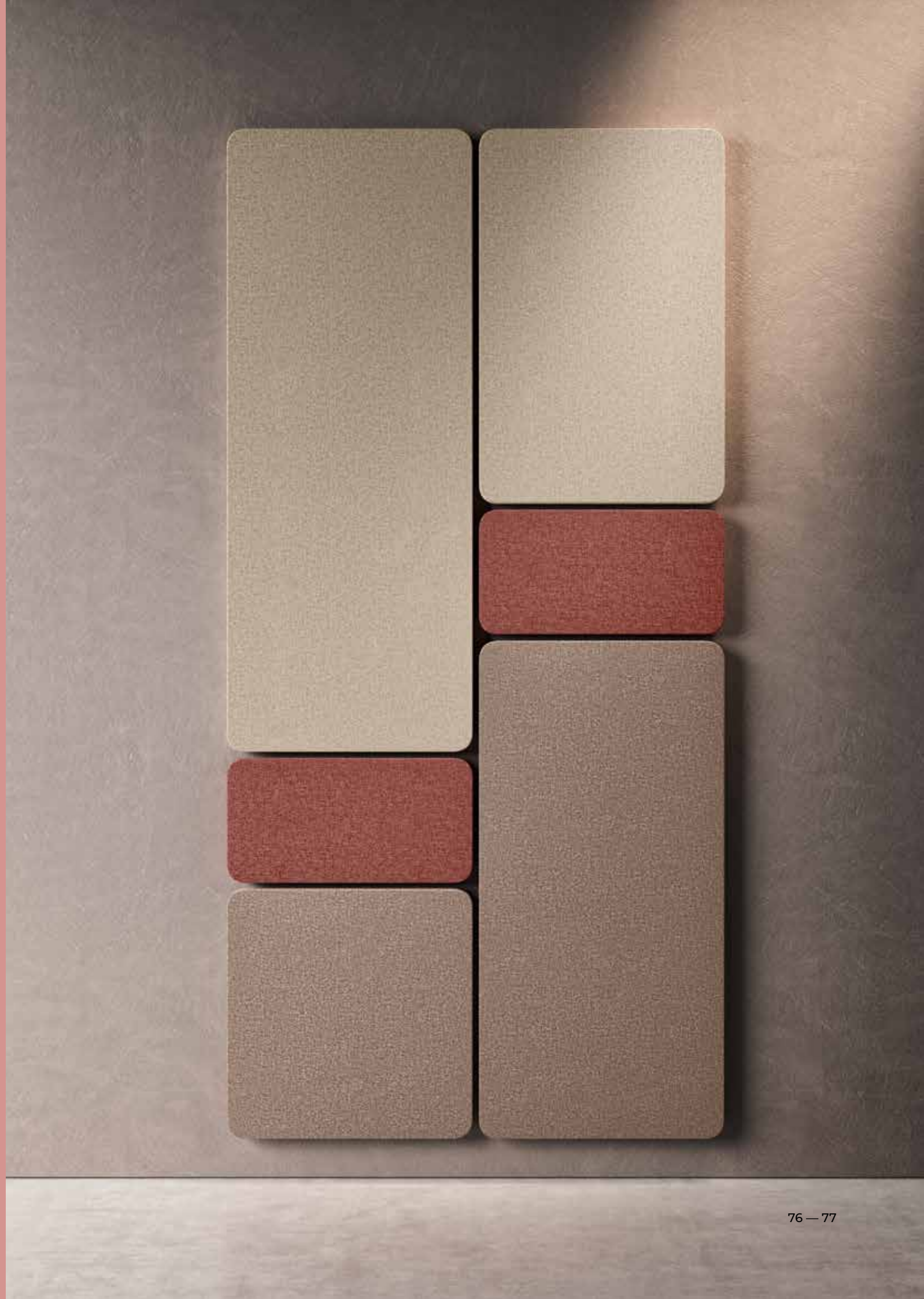
tessuto, fabric, tissu, stoff, tejido





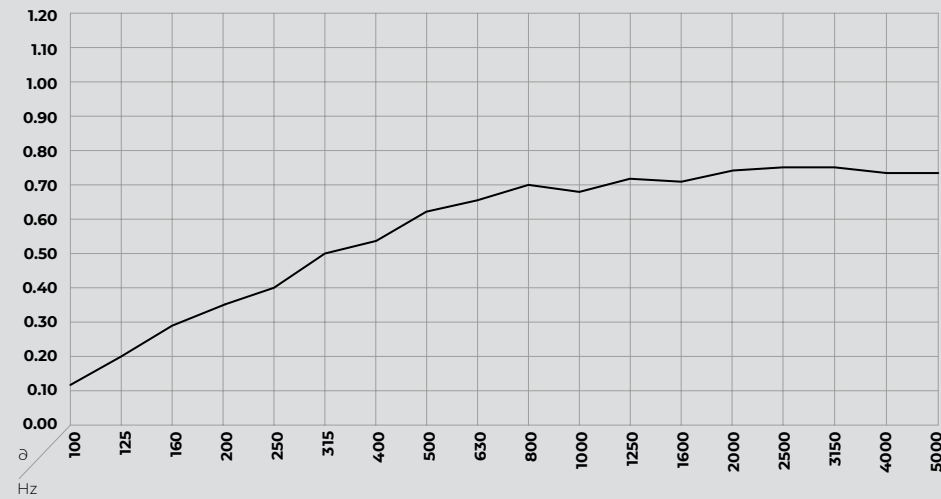
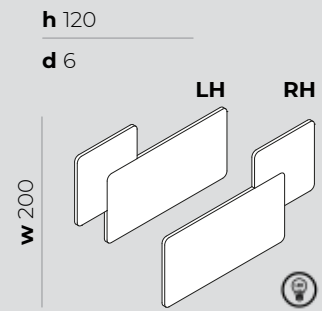
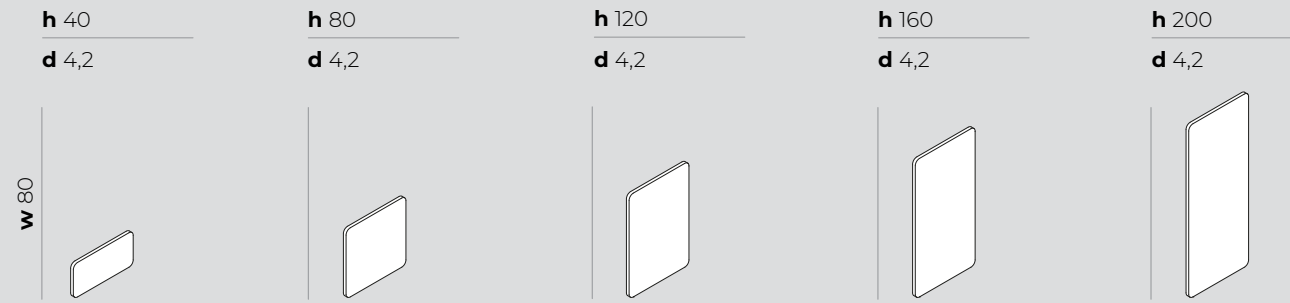
B-SOUND

*design:
gherardiarchitetti*

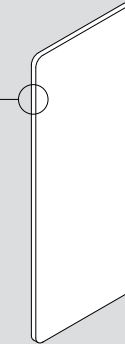




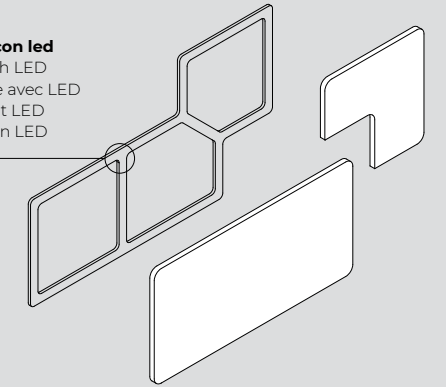




fissaggio tramite velcro
 velcro fastening
 fermeture par velcro
 Klettverschluss
 cierre con velcro

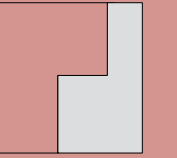


telaio perimetrale con led
 perimeter frame with LED
 chassis périphérique avec LED
 Umfangsrahmen mit LED
 marco perimetral con LED



tessuto, fabric, tissu, stoff, tejido





COMPLEMENTI

complements
compléments
Ergänzungen
complementos

design:
R&D Bralco

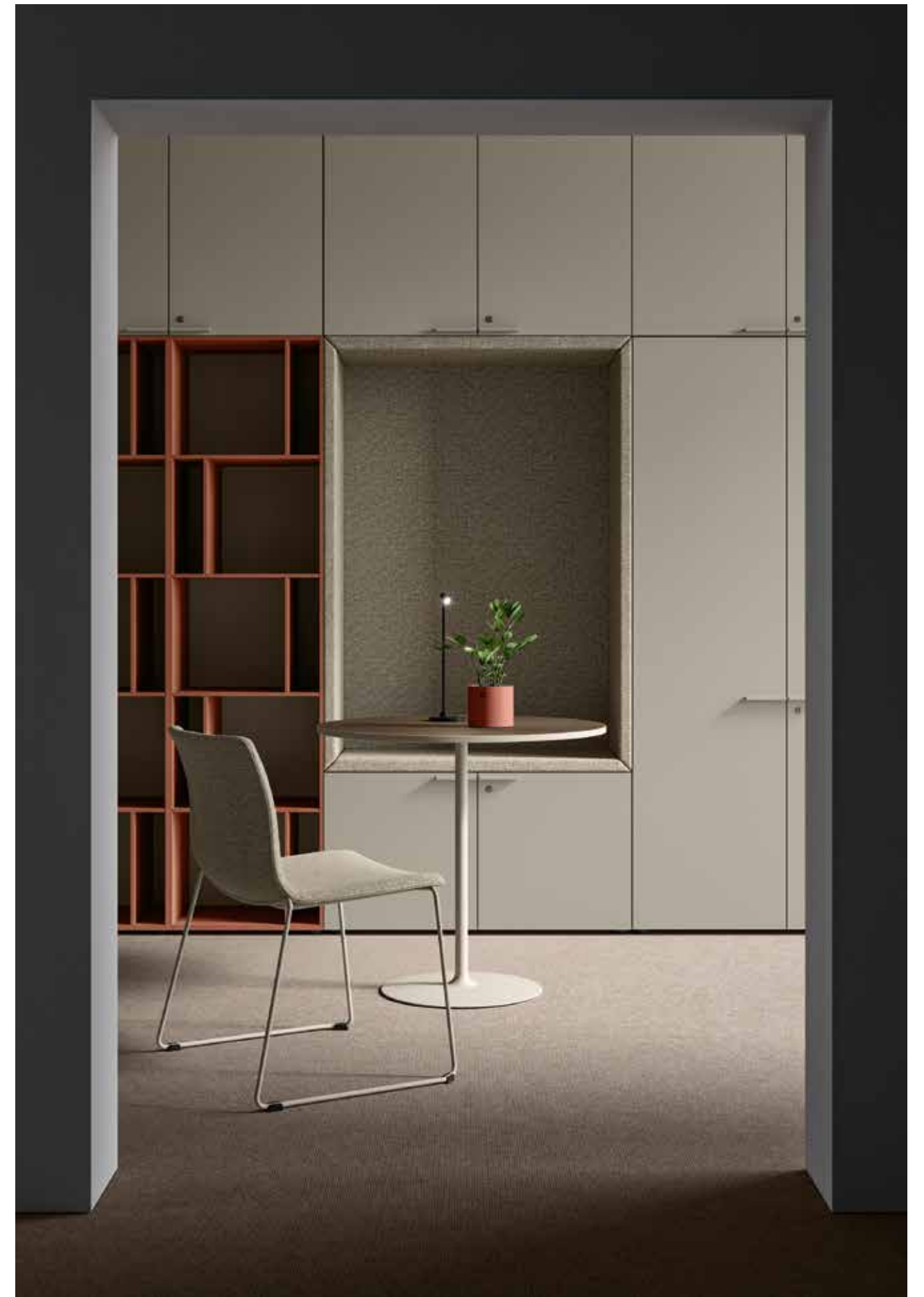


FLIPPER





LOREN





WINGLET

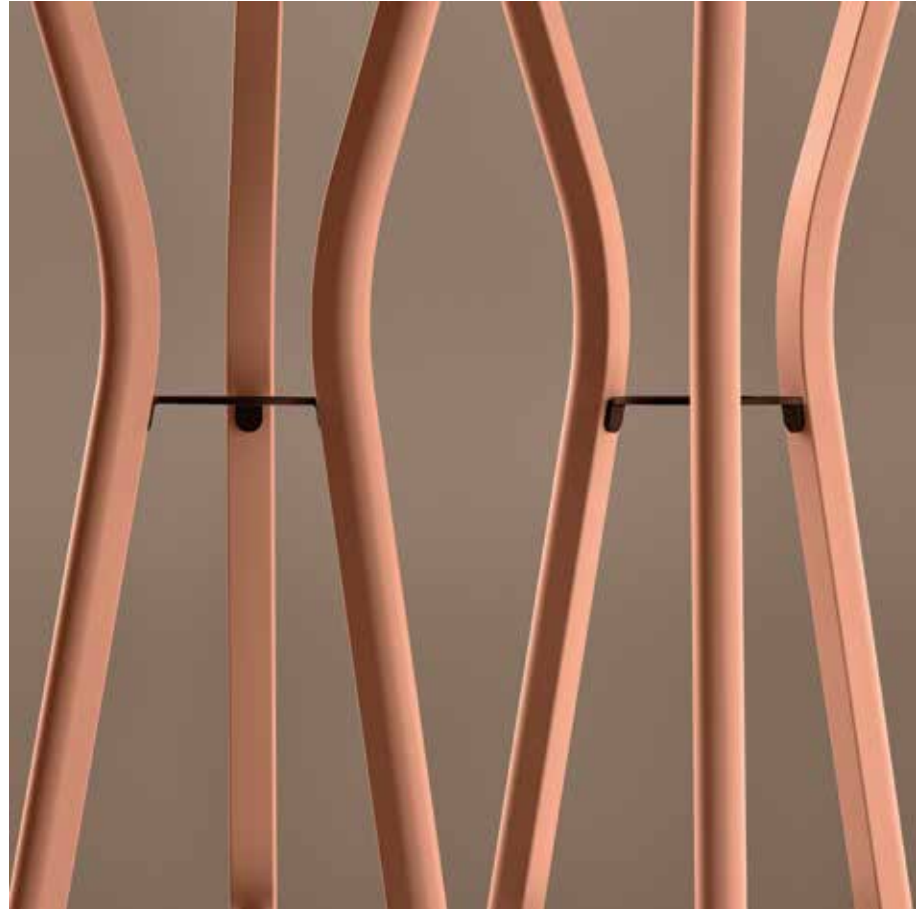


TAVOLINO REGOLABILE IN ALTEZZA

Height adjustable table
Table réglable en hauteur
Höhenverstellbarer Tisch
Mesa regulable en altura

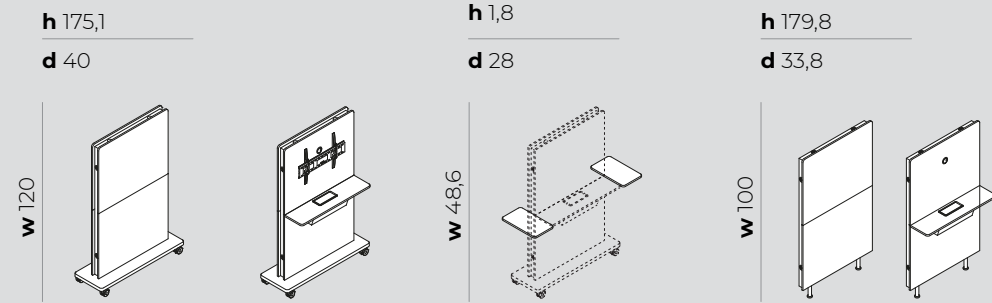


PICAKI





FLIPPER

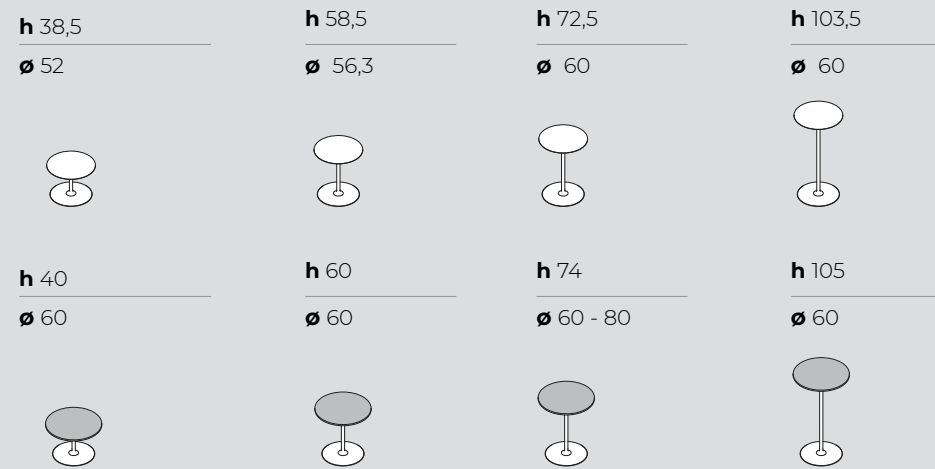


struttura
frame
structure
Korpus
estructura

melaminico, melamine, mélamine, melamin, melamina



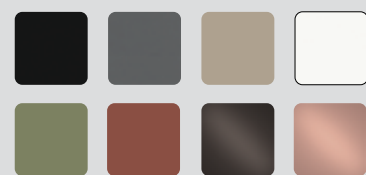
LOREN



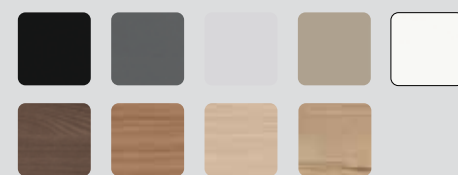
struttura
frame
structure
Korpus
estructura

piano
top
plan
platte
plano

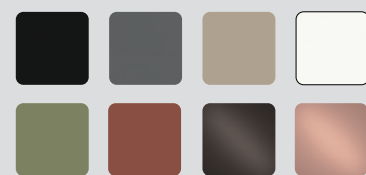
metallo, metal, métal, metal, metal



melaminico, melamine, mélamine, melamin, melamina

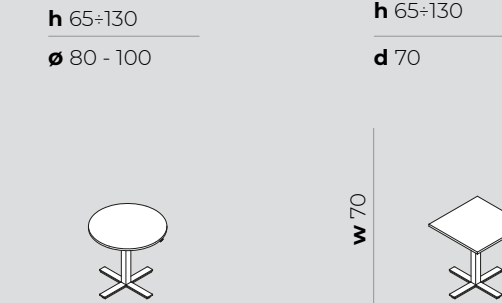


metallo, metal, métal, metal, metal



misure in cm • measurements in cm • mesures en cm • Maße in cm • medidas en cm

WINGLET



highlights

batteria per sistema elevabile
battery for tables
batterie pour tables
Schreibtisch-Akku
bateria para mesas



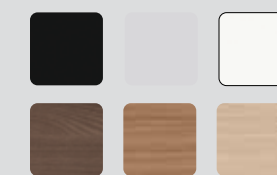
struttura
frame
structure
Korpus
estructura

metallo, metal, métal, metal, metal



piano
top
plan
platte
plano

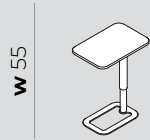
melaminico, melamine, mélamine, melamin, melamina



BI

h 52-70

d 37



struttura
frame
structure
Korpus
estructura

metallo, metal, métal, metal, metal



piano
top
plan
platte
plano

melaminico, melamine, mélamine, melamin, melamina



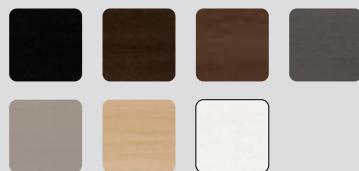
PICAKI

h 160

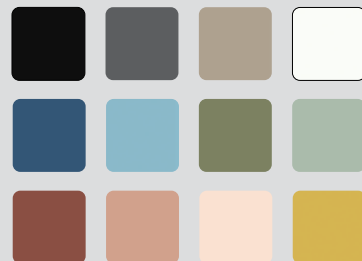
d 45



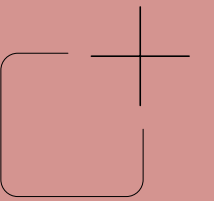
legno, veneer, bois, holz, madera



laccato opaco, lacquered matt, lacqué mat, matt lackiert, lacado mate



misure in cm • measurements in cm • mesures en cm • Maße in cm • medidas en cm



ACCESSORI

accessories
accessories
Zubehör
accessorios

design:
R&D Bralco



ACCESSORI PER SCHERMI

screen accessories
accessoires d'écran
Bildschirmzubehör
accesorios de pantalla





PORTAPENNE

Pen holder
Porte-stylo
Stifthalter
Portalápices



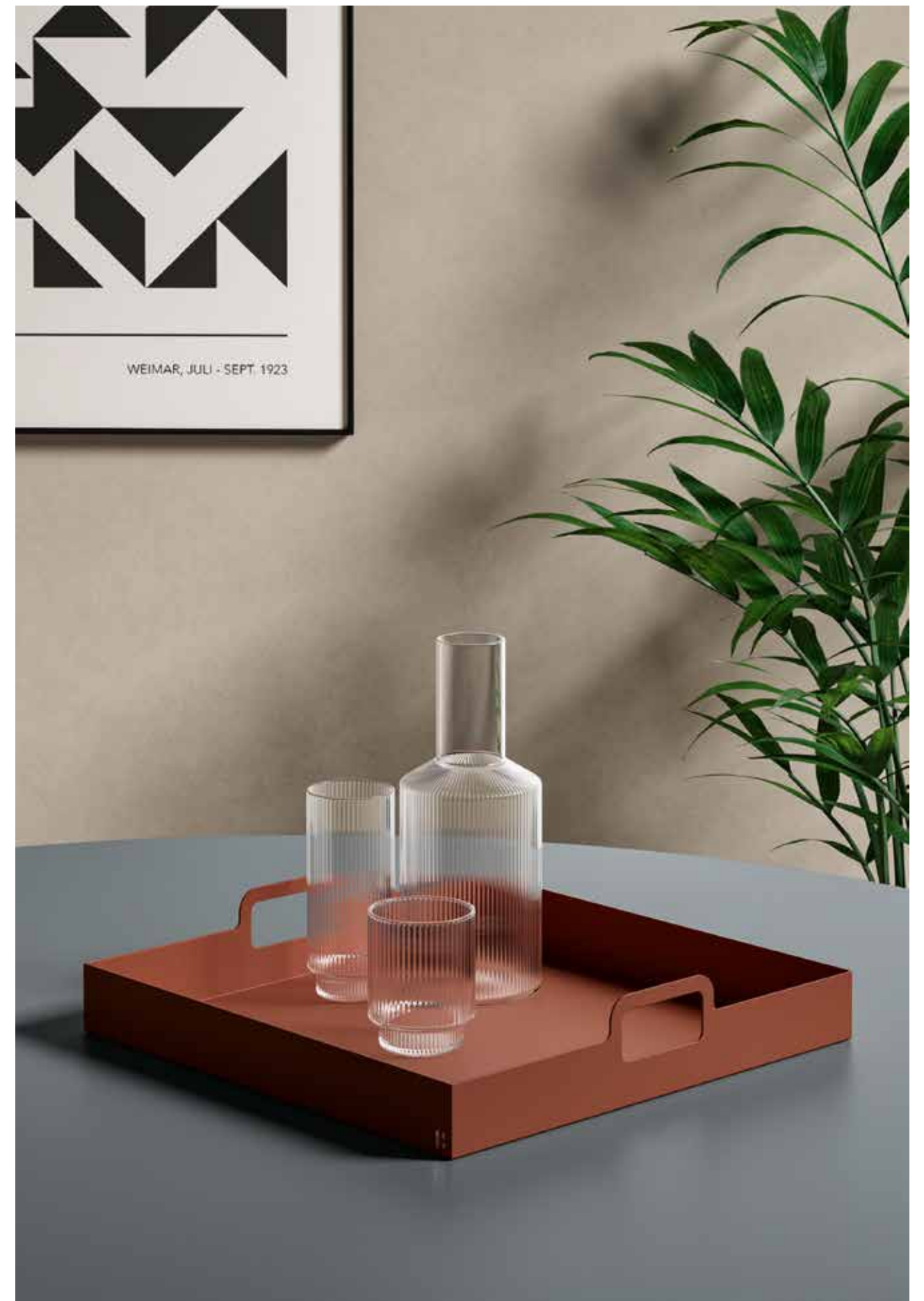
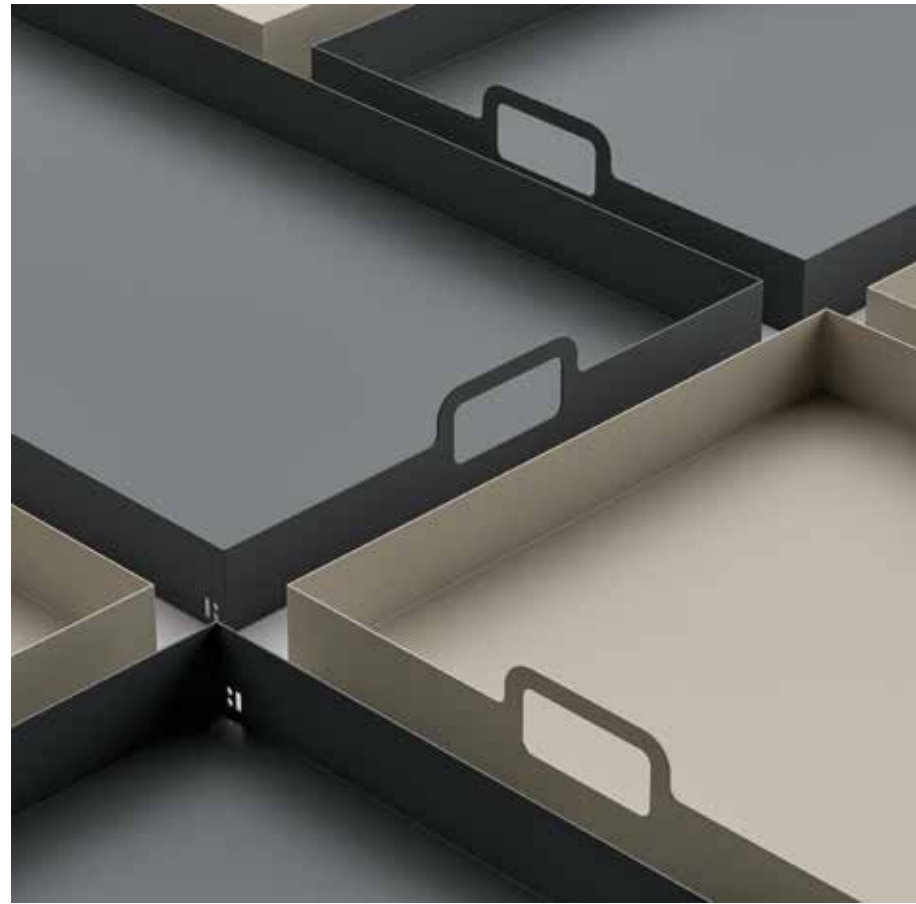
CESTINO / PORTAOMBRELLI

Wastebasket/Umbrella stand
Panier/Porte-parapluies
Korb-/Schirmständer
Cesta/Paraguas



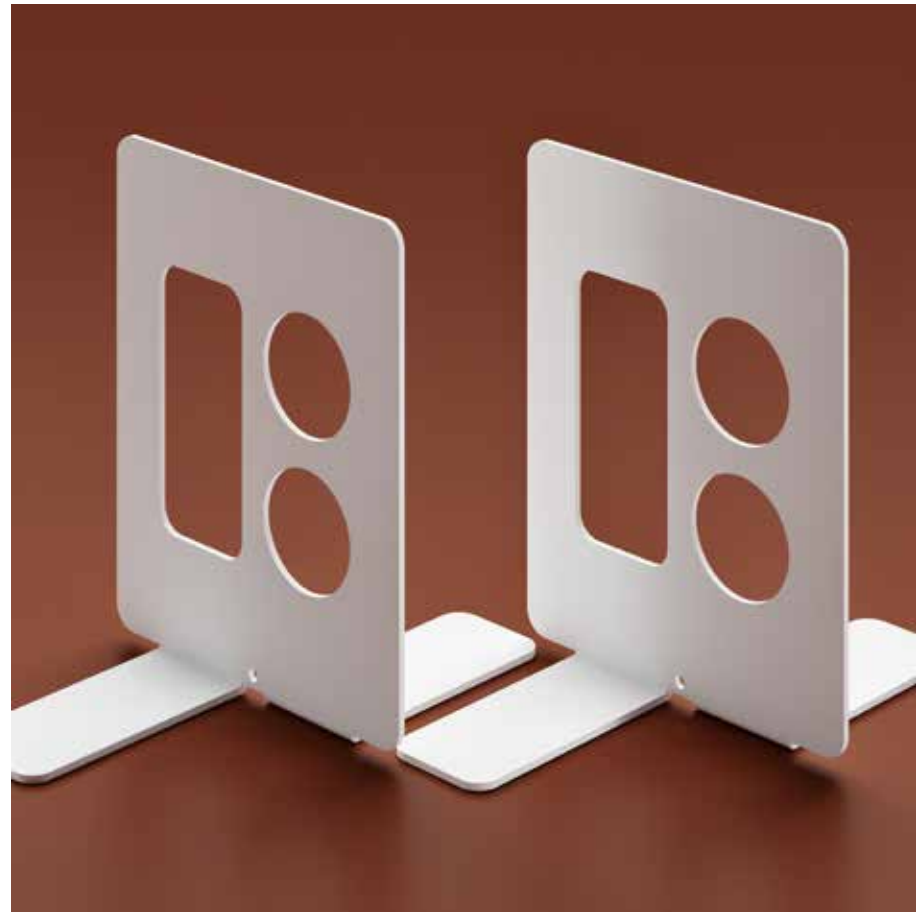
VASSOIO PORTA OGGETTI

Storage tray
Plateau de stockage
Ablagefach
Bandeja de almacenamiento



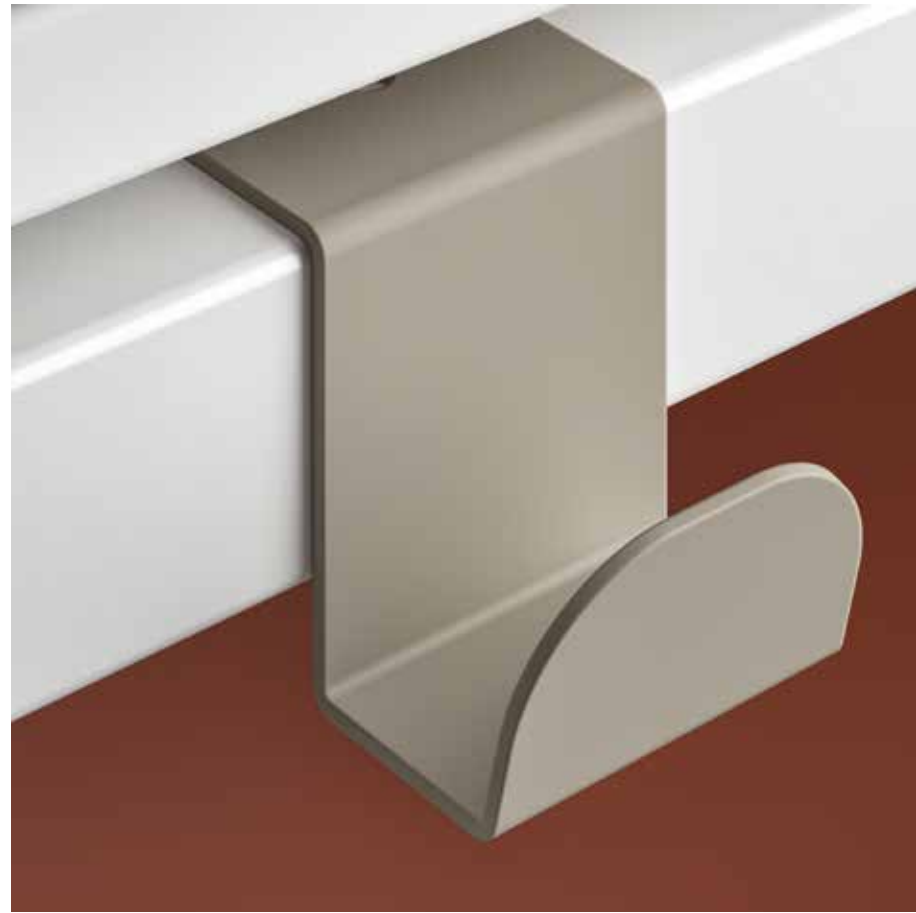
REGGI LIBRI

Bookends
Ferme-livres
Buchstützen
Sujetalibros



GANCIO PORTABORSA

Bag hook
Crochet pour sac
Taschenhaken
Gancho para bolso

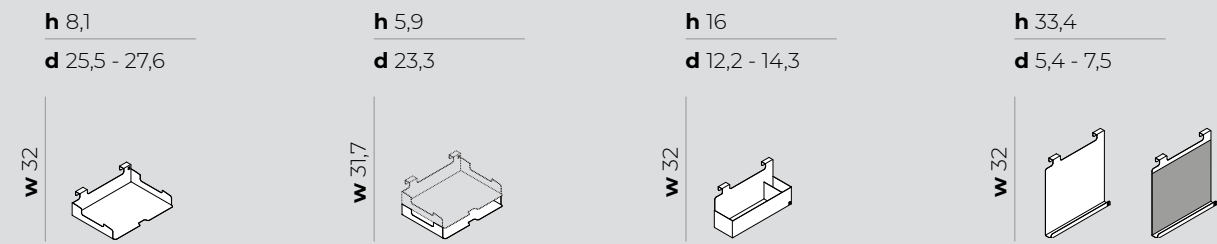


SPOT





ACCESSORI PER SCHERMI • screen accessories • accessoires d'écran • Bildschirmzubehör • accesorios de pantalla



metallo, metal, métal, metal, metal



PORTAPENNE • pen holder • porte-stylo • Stifthalter • portalápices

h 10
ø 8



metallo, metal, métal, metal, metal



CESTINO/PORTAOMBRELLI • wastebasket/umbrella stand • panier/porte-parapluies • korb-/schirmständer • cesta/paraguas

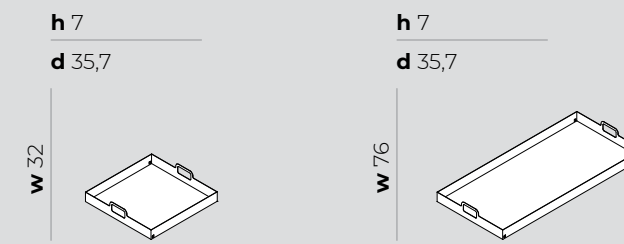
h 40
ø 27,5



metallo, metal, métal, metal, metal



VASSOIO PORTA OGGETTI • storage tray • plateau de stockage • Ablagefach • bandeja de almacenamiento

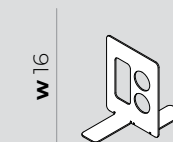


metallo, metal, métal, metal, metal



REGGI LIBRI • bookends • ferme-livres • Buchstützen • sujetalibros

h 20,6
d 18

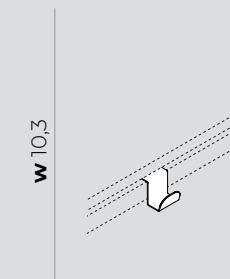


metallo, metal, métal, metal, metal



GANCIO PORTABORSA • bag hook • crochet pour sac • Taschenhaken • gancho para bolso

h 3
d 5,4



metallo, metal, métal, metal, metal





SPOT

h 26

∅ 10,5

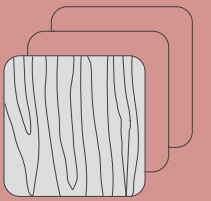


h 89

∅ 16,5



metallo, metal, métal, metal, metal



FINITURE E COLORI
finishing and colors
finitions et couleurs
Oberfläche und farben
acabados y colores



legno • veneer • bois • Holz • hout • maderá



rovere laccato nero
black lacquered oak
chêne laqué noir
schwarz lackierter Eiche
roble lacado negro

rovere Carbon
Carbon oak
chêne Carbon
Eiche Carbon
roble Carbon

rovere tabacco
tobacco oak
chêne tabac
Eiche Tabak
roble tabaco

rovere grigio scuro
dark grey oak
chêne gris foncé
dunkelgraue Eiche
roble gris oscuro



rovere grigio
grey oak
chêne gris
Eiche grau
roble gris

rovere naturale
natural oak
chêne naturel
Natur Eiche
roble natural

rovere laccato bianco
white lacquered oak
chêne laqué blanc
weiß lackierter Eiche
roble lacado blanco

melaminico • melamine • mélamine • melamin • melamina

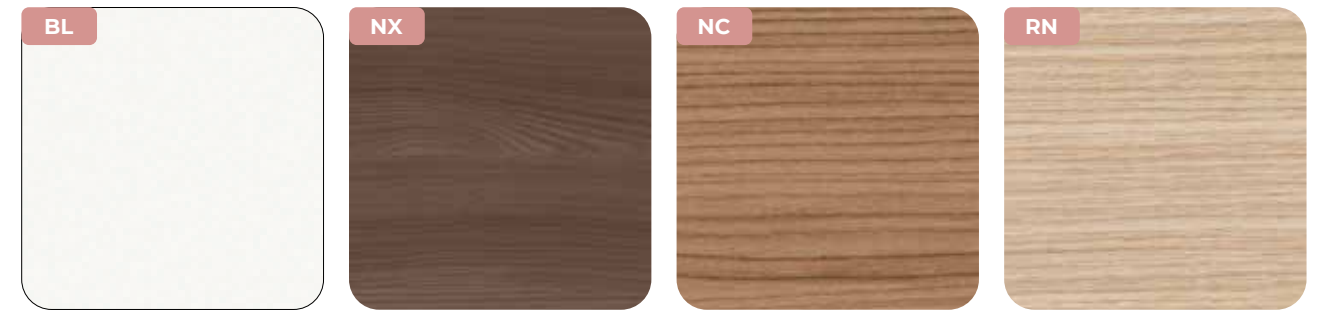


nero
black
noir
schwarz
negro

grigio titanio
titanium grey
gris titane
titangrau
gris titanio

grigio perla
pearl-grey
gris perle
perlgrau
gris perla

tortora
turtledove
tourterelle
taubengrau
törtola

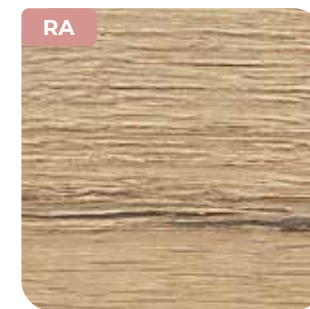


bianco
white
blanc
weiß
blanco

noce Lux
walnut Lux
noyer Lux
lux Nussbaum
nogal Lux

noce canaletto
canaletto walnut
noyer canaletto
Canaletto Nussbaum
nogal canaletto

rovere naturale
natural oak
chêne naturel
Natur Eiche
roble natural



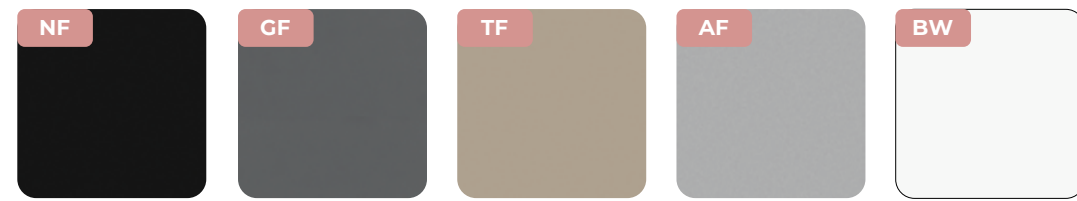
rovere anticato
traditional oak
chêne vieilli
Eiche Antik
roble antiguo



RA Superficie antibatterica
Antibacterial surface
Surface antibactérienne
Antibakterielle Oberfläche
Superficie antibacteriana



metallo • metal • métal • metall • metal



nero
black
noir
schwarz
negro

grigio titanio
titanium grey
gris titane
titangrau
gris titanio

tortora
turtledove
tourterelle
taubengrau
törtola

epox alluminio
silver epoxy
epoxy aluminium
epoxy aluminium
epoxidico alluminio

bianco
white
blanc
weiß
blanco



oliva
olive
olive
olive
oliva

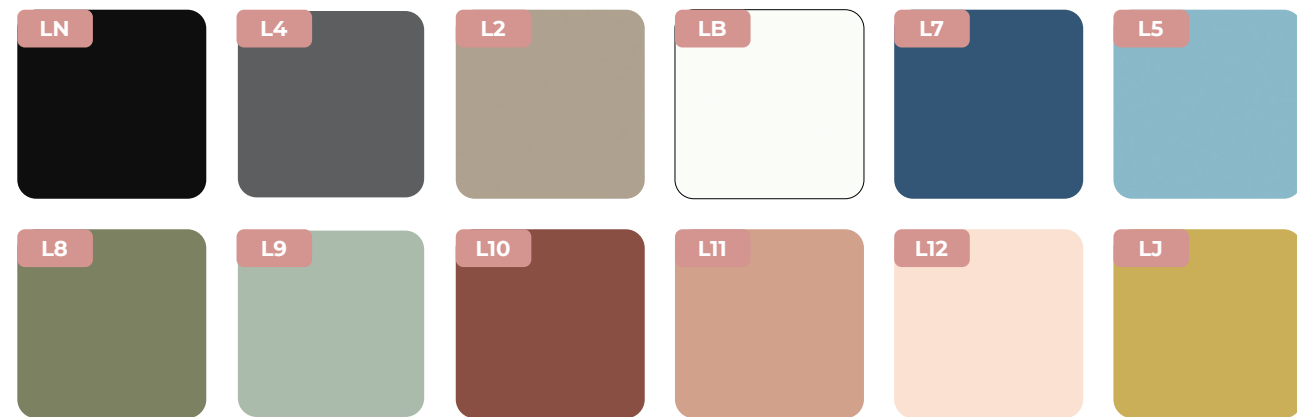
terracotta
terracotta
terre cuite
terrakotta
terracota

chromo lucido
glossy chrome
chromé brillant
Chrom poliert
cromo brillo

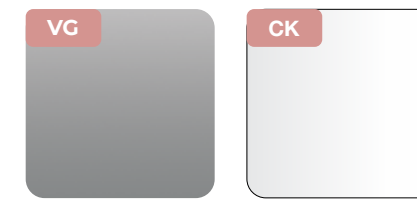
grigio ombra
shadow grey
gris ombre
vulcanschwarz
sombra gris

rame rosa
pink copper
cuivre rose
kupfer-Pink
cobre rosa

laccato opaco • lacquered matt • laqué mat • matt lackiert • lacado mate



vetro temperato • tempered glass • verre trempé • sicherheitsglas • vidrio templado



vetro stampato • printed glass • verre imprimé • Bedrucktes Glas • vidrio impreso





tessuto • fabric • tissu • stoff • tejido

MIRAGE



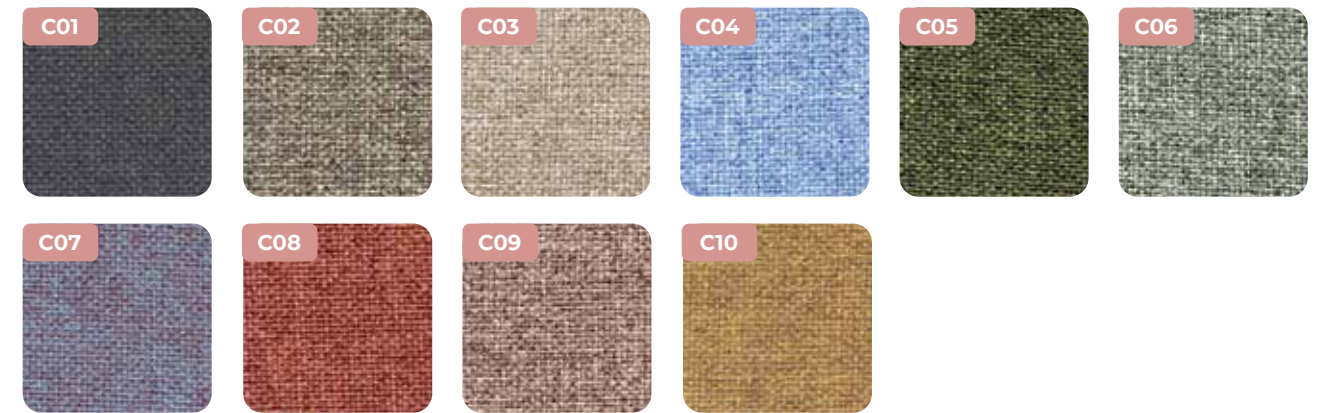
NEMI MELANGE



FENICE



CONVERT MEL 4000



CURA



POSEIDON





selezione delle materie prime • selection of raw materials • sélection des matières premières • Auswahl der Rohstoffe • seleccion de materias primas

attenzione e cura nella scelta dei materiali: Legno impiallacciato / vetro / pelle / tessuto / vetro ceramica • attention and care in the selection of materials: veneer / glass / leather / fabric / vitro ceramic • attention et soin dans la sélection des matériaux: bois plaquage/verre/peau/tissu/vitro-céramique • Aufmerksamkeit und Sorgfalt bei der Auswahl der Materialien: Holzfurnier / Glas / Leder / Stoff / Glaskeramik • atención y cuidado en la selección de los materiales: madera pintada/vidrio/piel/tejido/vidrio ceramica



produzione certificata, ecologica e rispettosa dell'ambiente e dell'utente • certified production, green environmentally and user friendly • production certifiée, écologique et respectueuse de l'environnement et de l'individu • Zertifizierte, umweltfreundliche Produktion mit großer Respekt für Umwelt und Nutzer • Produccion certificada, ecologica y respetuosa del ambiente y del usuario



progettazione • space planning • projets • Projekte • proyectos



capacità di produzione industriale • industrial production ability • capacité de production industrielle • industrielle Produktionskapazität • capacidad de produccion industrial



garanzia e disponibilità dei componenti • warranty and availability of components • garantie et disponibilité des composants • Garantie und Verfügbarkeit der Komponenten • garantía y disponibilidad de los componentes



esperienza • experience • expérience • Erfahrung • experiencia



articoli speciali • special items • articles spéciaux • Sonderanfertigungen • artículos especiales



imballi costituiti da materiali facilmente separabili e riciclabili • recyclable and easy to dispose packagings • emballages constitués de matériaux facilement séparables et recyclables • Die Verpackungen ermöglichen ein schnelles Trennen und Wiederverwertung von Materialien • embalaje constituido de materiales simplemente separables y reciclables



riduzione di formaldeide e di sostanze tossiche e potenzialmente dannose • low formaldehyde emission, low toxic and potentially harmful substances • réduction de formaldéhyde et des substances toxiques et potentiellement nocives • Reduzierung von Formaldehyd und Giftstoffe, die eine potentielle Gefahr darstellen • reducción de formaldehido y sustancias toxicas y que pueden ser dañinas



estensione del ciclo di vita dei prodotti • product life extension • extension du cycle de vie du produit • Erweiterung der Produktlebensdauer • extension del ciclo de vida de los productos



produzione di arredi a ridotto impatto ambientale • furniture products with reduced environmental impact • production de mobiliers à impact environnemental réduit • Produktion von Einrichtungen mit niedriger Umweltbelastung • produccion de mobiliario con reducido impacto ambiental



facilità di disassemblaggio per favorire la riconfigurabilità, il riutilizzo o il riciclo • easy reconfiguration, reuse or recycling • simplicité de démontage pour favoriser la reconfiguration, la réutilisation ou le recyclage • Leichte Zerlegung um Rekonfigurierbarkeit, Wiederverwendung oder Recycling zu ermöglichen • facilidad de desensamblaje para facilitar el configurar de nuevo, reutilizar y reciclar

il nostro sistema di produzione segue standard avanzati per la cura dell'individuo e della natura • our production system follows advanced standards for individual and nature care • notre système de production suit des standards avancées pour le soin de l'individu et de la nature • Unser Produktionsverfahren fortschrittlichen Standards für den Schutz von Mensch und Natur • nuestro sistema de produccion sigue estandard avanzados para el cuidado al individuo y a la naturaleza.

la nostra azienda opera con l'obiettivo primario di garantire prodotti che raggiungano un corretto equilibrio tra sostenibilità ambientale e design • our Company operates with the primary objective of guaranteeing products that achieve a correct balance between, environmental sustainability and design • notre société a comme objectif principal celui de garantir des produits qui atteignent un juste équilibre entre, durabilité environnementale et design • Unsere Firma hat sich als Hauptziel die Garantie von Produkten gesetzt, welche ein korrektes Gleichgewicht zwischen Umweltverträglichkeit und Design erzielen • nuestra empresa trabaja con el objetivo primario de garantizar productos que alcanzan un correcto equilibrio entre sostenibilidad ambiental y de diseno

I nostri prodotti in melaminico possono essere forniti FSC® su richiesta cliente • Our melamine products can be FSC® supplied upon customer request • Nos produits en mélaminé peuvent être fournis certifiés FSC® sur demande du client • Unsere Melamin-Produkte können auf Anfrage des Kunden in FSC® geliefert werden • Nuestros productos de melamina pueden ser suministrados FSC® a petición del cliente



California 93120
Compliant for Formaldehyde Phase 2



Bralco Srl
Via Luigi Einaudi, 1
31058 Susegana (TV) Italy

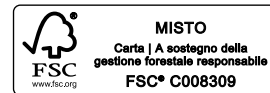
T +39 0438 43 77
info@bralco.it
bralco.it

follow us on:



project: gherardi architetti
images: gherardi architetti, virtual design
printed: grafiche antiga
03_2024

Thanks to:
Anastasiades, Davide Groppi, Lym,



Particolari tecnici ed estetici possono essere modificati senza preavviso.
Le rese cromatiche non sono vincolanti così come la fedeltà della riproduzione.
Dati, misure e dettagli devono essere verificati con il listino.

Technical and aesthetic details can be modified without notice.
Colour rendering may differ.
Check the data, measures and details on the price list.

Les détails techniques et esthétiques peuvent être modifiés sans préavis.
Le rendu chromatique n'est pas contractuel, ainsi que la fidélité de la reproduction.
Les données, les mesures et les détails doivent être vérifiés avec le tarif.

Technische und ästhetische Details könnten ohne Voranmeldung geändert werden.
Die Echtheit der Farbwiedergabe ist nicht verbindlich.
Daten, Maße und Details sind in der Preisliste zu überprüfen.

Los detalles técnicos y estéticos pueden ser modificados sin preaviso.
Los rendimientos de color y la fidelidad de la reproducción no son vinculantes.
Los datos, las medidas y los detalles deben ser verificados con la tarifa de precios.

